



## **Parks Canada Preliminary Screening under the *Mackenzie Valley Resource Management Act***

### **TYPE OF DEVELOPMENT:**

- New
- Amended
- Requires a permit, licence or authorization under the *Preliminary Screening Requirement Regulations* (issuance of a Business Licence and Aircraft Access Permit pursuant to the *National Parks of Canada Business Regulations* s 4.1)
- Does not require permit, licence or authorization and is proposed by PCA

### **1. DEVELOPMENT TITLE & LOCATION**

Aircraft Charter Company Operations in Nahanni and Nááts'ihch'oh National Park Reserves

### **2. PROPONENT INFORMATION**

See "Companies Licensed to Operate in Nahanni and/or Nááts'ihch'oh", page 2 of this screening

### **3. PROPOSED DEVELOPMENT DATES**

Planned commencement: 2021-04-01

Planned completion: 2022-03-31

### **4. INTERNAL FILE #**

NAH2021-001

### **5. DEVELOPMENT DESCRIPTION**

Nahanni National Park Reserve (Nahanni) and Nááts'ihch'oh National Park Reserve (Nááts'ihch'oh) are accessed primarily by air (fixed and rotary wing aircraft) for park operational and tourism purposes; other than permit-only road access via the Howards Pass Access Road in the extreme western portion of the parks. The majority of air access is facilitated by aircraft charter company outfitters. These companies must obtain Parks Canada business licences to operate in the parks; according to the *Mackenzie Valley Resource Management Act* (MVRMA) their activities must undergo preliminary screening before these licences can be issued. Aircraft operations run throughout the year, though decrease substantially and are primarily limited to park operational requirements during the fall, winter, and spring. Day flights, to drop off/pick up overnight visitors and park staff, or facilitate day sightseeing excursions, comprise the majority of charters, though occasional overnight stays are required for park operational



purposes. This preliminary screening applies to the following aircraft charter companies, and up to five additional aircraft operators (for designated landing areas only), and includes the listed activities/locations:

### Companies Licensed to Operate in Nahanni and/or Nááts'jch'oh

Air Tindi	Horizon Helicopters Ltd.	Simpson Air 1981 Ltd
Alkan Air	Kluane Airways Ltd	Solitude Excursions Ltd
Alpine Aviation	Liard Air Ltd	South Nahanni Airways
Black Sheep Aviation & Cattle Co. Ltd.	Nahanni Heli Adventures	Trans North Turbo Air Limited
Fireweed Helicopters Ltd.	Northern Rockies Air Charter Ltd.	Tundra Helicopters
Great Slave Helicopters 2018 Ltd. / Sahtu Helicopters	North-Wright Airways Ltd	

### Activities at designated landing areas in Nahanni and non-designated landing areas in Nááts'jch'oh

- Day flight seeing experiences
- Commercial transport of visitors and freight for recreational activities such as hiking, mountain climbing, mountaineering, and river trips
- Nahanni and Nááts'jch'oh NPR operational activities
- Transport of researchers for purposes outside of park operational activities

### Locations (see map, Appendix 1)

Non-designated aircraft landing areas in Nááts'jch'oh National Park Reserve		
(A)	Nááts'jch'oh Tué (Moose Ponds)	These areas were used as aircraft access points prior to park establishment and may become designated landing sites once archeological assessments are completed. Aircraft operators are permitted annually to land at these locations.
(B)	Túoch'ee Tué (O'Grady Lake)	
(C)	Qtaa Tué Fehto (Divide Lake)	
(D)	Níonep'ene? Tué (Grizzly Bear Lake)	
(E)	Tuededéveh Tué (Clearwater Lake)	
---	Howards's Pass Access Road	Transport of authorized researchers/contractors and/or Parks Canada staff

Non-designated aircraft landing areas in Nahanni National Park Reserve		
(F)	South of Haywire Lake	Transport of researchers for purposes outside of park operational activities
(G)	Bologna Glacier	Transport of researchers for park operational activities
(H)	Southwest of Glacier Lake	Transport of researchers for purposes outside of park operational activities
(I)	Southeast of Tungsten	



---	Howards's Pass Access Road	Transport of authorized researchers/contractors and/or Parks Canada staff
---	Prairie Creek Access Road	Transport of authorized researchers/contractors and/or Parks Canada staff

Designated aircraft landing areas	
①	Honeymoon Lake
②	Island Lakes
③	Glacier Lake
④	Bunny Bar
⑤	Gahnjthah Mje
⑥	South Nahanni River above Nájljcho (Virginia Falls)
⑦	Seaplane Lake

## 6. VALUED COMPONENTS

Note: Outfitting companies have utilized the same locations in both parks since the 1960's and 70's; many have been surveyed for natural and heritage resources (these surveys are ongoing) and areas of significance are avoided/respected by guides and their clients.

### *Soil/Land Resources*

- The parks are located within the Taiga and Boreal Cordillera Ecological regions of the Northwest Territories. These regions include a complex landscape of rugged peaks and ridges, rolling hills, eroded plateaus, deep V- and U-shaped valleys, fast-flowing braided rivers and streams and slow-flowing meandering rivers, and in the south and west, glaciers and icefields. Glacial deposits are widely distributed and occur mainly on the floors and lower slopes of valleys, lakes and ponds are small and sparsely distributed, and wetlands are locally common only on the floodplains and lower slopes of large rivers and on a few broad plateaus. It is an area of discontinuous permafrost (ECG, 2010). To protect the alpine forests in Nááts'jch'oh, fires at all lakes are prohibited. This does not apply to Sahtu Dene and Métis. The area within the original Nahanni park boundary is a UNESCO World Heritage Site, recognized for its exceptional representation of on-going geological processes, including karst topography, hot springs/tufa mounds, and caves. Several of these areas are Zone 1, Special Preservation, and visitor access is restricted (Parks Canada, 2010).

### *Air/Noise Quality*

- No formal observations of air/noise quality have occurred in the parks, however it is expected that these valued components are excellent and representative of their natural state. The majority of both parks are zone II Wilderness, which represents "extensive areas that are good representations of a natural region and are conserved in a wilderness state" and "in much of Zone II, visitors have the opportunity to experience



remoteness and solitude. Motorized access is not permitted except for controlled air access" (Parks Canada, 2010 & 2017).

#### *Aquatic Resources*

- SARA-listed Bull Trout are present in the South Nahanni River below Nájłicho (Babaluk, 2015).
- The South Nahanni River is silt-laden (March and Scotter, 1975), as is common of many of the rivers and streams in this area as they flow through glacial deposits (ECG, 2010).

#### *Flora and Fauna*

- Migratory and SARA-listed birds are present in the parks and may nest at locations visited by guided groups; the general nesting season for this area extends from approximately May 1 to August 25. Common Nighthawk (*Chordeiles minor*), a ground-nesting species has been observed nesting on the Prairie Creek and Bunny Bar alluvial fans (Tate, pers. comm., 2017; Arnold, pers. comm., 2020).
- Five bat species – Little Brown Myotis (*Myotis lucifugus*), Northern Myotis (*M. septentrionalis*), both SARA-listed bat species, Long-legged Myotis (*M. volans*), Big Brown Bat (*Eptesicus fuscus*), and Hoary Bat (*Lasiurus cinereus*) – have been recorded in both parks (Lausen *et al.*, 2014; EDI, 2019), while the occurrence of two additional species – Longeared Myotis (*M. evotis*) and Eastern Red Bat (*L. borealis*) – has only been confirmed within Nahanni (Lausen *et al.*, 2014). As of 2019, two cave sites within Nahanni, including Grotte Valerie, have been confirmed as hibernacula for Myotis bat species and two additional sites are suspected (Horne and Critchley, 2020). Current evidence suggests that Grotte Valerie is likely used as a hibernaculum by five species: Little Brown Bat, Northern Myotis, Long-legged Myotis, Big Brown Bat and Longeared Myotis (C. Lausen and G. Horne, pers. comm., 2017). All caves in the park reserves are off-limits to visitors.
- Grizzly Bear (*Ursus arctos* - northwest population) have a widespread distribution throughout the parks (Weaver, 2006). However, grizzly bear encounters in the parks are relatively uncommon with between 0 and 10 sightings reported annually by visitors and park staff in Nahanni from 2010 to 2017 and 1-2 annual sightings reported in Nááats'ihch'oh from 2016 to 2017 (Nahanni National Park Reserve, 2017). The majority of grizzly bear sightings occur in areas of the park where food caches are provided for visitors to store food and other attractants – Gahnjthah Mje, Nájłicho and Glacier Lake. With lower visitor numbers and no designated camping areas/food caches, Nááats'ihch'oh communicates notices of bear activity to visitors as early as possible. In Nááats'ihch'oh, camping within 1km of hot springs is prohibited. This is in part due to the high observations of grizzly bear activity recorded on remote cameras. Additionally, in accordance with Nahanni's Bear Management Plan, all reported bear observations are carefully reviewed by park staff to determine whether management action (e.g., public alerts, area closures, etc.) should be taken to prevent human-bear conflict.



- Interaction with other SARA-listed species in the parks – i.e., Collared pika (*Ochotona collaris*), Caribou (*Rangifer tarandus* - boreal population) and Woodland caribou (*Rangifer tarandus caribou* - Northern Mountain population) – will be minimal as visitors either do not frequent habitats where these species are located or visitation does not occur during periods of significant congregation such as calving. No adverse effects are anticipated if the mitigation measures described in this screening are followed.
- No SARA-listed vegetation species will be impacted. Nahanni Aster (*Symphotrichum nahanniense*), a SARA-listed species, exists at various locations along the Flat and South Nahanni rivers (COSEWIC, 2014). Three of these populations are protected as Zone I Special Preservation (no public access except by permit or with Parks staff present) and the remaining four are in Zone II Wilderness areas (Parks Canada, 2010); revised zoning or alternate protection measures are being examined for these latter populations during the current management planning process.

#### *Social/Cultural Environment (including Wildlife Harvesting)*

- Harvesting (wildlife, plants, and trees) and motorized access for traditional activities within park boundaries is a right of local First Nations and Sahtu Métis (Parks Canada 2010 & 2017).
- Public access to Zone I special preservation areas with significant cultural importance, including Mount Nááts'j̄hch'oh and Chitú (Yohin Lake), is not allowed (Parks Canada, 2010; Parks Canada, 2017). Public access to the south tufa mound at Gahn̄hthah is permitted through guided hikes only (Parks Canada, 2010). Traditional use by local First Nations and Sahtu Métis is not restricted through park zoning

#### *Heritage Resources*

Heritage resources are defined as a human work, an object, or a place that is determined, on the basis of its heritage value, to be directly associated with an important aspect or aspects of human history and culture of an heritage area (Parks Canada, 2013). Heritage resources include archaeological or historic sites, burial sites, artifacts and other objects of historical, cultural, or religious significance, and historical or cultural records (MVRMA (s.2)). Heritage resources exist throughout both parks. Although surveys have been conducted to identify these resources at certain locations along major river valleys, lakes, and in the Glacier Lake/Cirque of the Unclimbables area, there remains a high potential for the presence of undocumented resources throughout both parks.

## **7. EFFECTS ANALYSIS**

See "*Parks Canada Best Management Practice (BMP) for Aircraft Operations and Landings in Nahanni and Nááts'j̄hch'oh National Park Reserves of Canada*" (Appendix 2).

## **8. MITIGATION MEASURES**



Aircraft charter company operators will adhere to mitigations described in the "*Parks Canada Best Management Practice (BMP) for Aircraft Operations and Landings in Nahanni and Nááts'j'ch'oh National Park Reserves of Canada*" (Appendix 2) and, when applicable, the *Fuel Caching Protocol for Nahanni National Park Reserve and Nááts'j'ch'oh National Park Reserve*.

**8.1 COVID-19 CONSIDERATIONS**

Aircraft operators, as well as their employees and clients, must comply with all directions and orders issued by the Northwest Territories Chief Medical Health Officer to prevent the spread of COVID-19. The operator must:

- a) ensure its employees and clients are aware of updates and/or modifications to the Chief Medical Health Officer’s directions and orders as they may occur;
- b) have an evacuation plan for presumed cases of COVID-19;
- c) report any confirmed cases of COVID-19 to the Superintendent.

**9. OTHER CONSIDERATIONS**

- Surveillance
- Follow-up monitoring, general
- Follow-up monitoring, required by legislation or policy (indicate basis of requirement e.g. required by the *Species at Risk Act*)
- SARA Notification
- ✓ Additional conditions may be placed on business licenses for Nááts'j'ch'oh

**10. SIGNIFICANCE OF RESIDUAL ADVERSE EFFECTS**

Given the limited and short-term magnitude of effects, the location in predominantly pre-impacted areas, and the application of mitigation measures the development is not expected to cause residual adverse effects to natural/cultural resources or visitor experience.

**11. EXPERTS CONSULTED**

<i>Department:</i> Parks Canada / Government of Canada	<i>Date of Request:</i> January 9, 2018
<i>Expert's Name &amp; Contact Information:</i> Patrick Carroll PO Box 750, Fort Smith, NT X0E 0P0 Patrick.carroll@pc.gc.ca / Tel: 867-872-7936	<i>Title:</i> Cultural Resource Management Advisor, SW NWT Field Unit



<i>Expertise Requested:</i> General information on heritage resource surveys/inventories for both parks	
<i>Response:</i> See information in section 6 (Valued Components)	
<i>Department:</i> Parks Canada / Government of Canada	<i>Date of Request:</i> June 15, 2017
<i>Expert's Name &amp; Contact Information:</i> Doug Tate 22 Third Street, Nipigon, ON, P0T 2J0 Doug.Tate@canada.ca / Tel: 807-372-0011	<i>Title:</i> Ecologist Team Lead, Lake Superior National Marine Conservation Area
<i>Expertise Requested:</i> Information on Common Nighthawk nesting locations	
<i>Response:</i> See information in section 6 (Valued Components)	
<i>Departments:</i> Wildlife Conservation Society Canada  Parks Canada / Government of Canada	<i>Date of Request:</i> November 2017
<i>Experts Names &amp; Contact Information:</i> Cori Lausen Suite 204 - 344 Bloor Street West, Toronto, ON M5S 3A7 cLausen@wcs.org  Greg Horne 1 Compound road, Jasper, AB greg.horne@canada.ca / Mobile: 780-883-0253	<i>Titles:</i> Associate Conservation Scientist  Resource Management Officer II
<i>Expertise Requested:</i> Information on bat species potentially using Grotte Valerie as a hibernaculum	
<i>Response:</i> See information in section 6 (Valued Components)	
<i>Department:</i> Parks Canada / Government of Canada	<i>Date of Request:</i> February 21, 2020
<i>Expert's Name &amp; Contact Information:</i> Sarah Arnold PO Box 348, Fort Simpson, NT X0E 0N0 sarah.arnold@canada.ca / Tel: 867-695-7768	<i>Title:</i> Ecologist Team Lead, Nahanni National Park Reserve
<i>Expertise Requested:</i> Information on Common Nighthawk nesting locations	
<i>Response:</i> See information in section 6 (Valued Components)	



## 11.1 References

- Arnold, S. 2020. Personal communication February 2020. Ecologist Team Leader, Nahanni National Park Reserve, Parks Canada.
- Babaluk *et al.* 2015. *Distribution of Fish Species within the South Nahanni River Watershed, Northwest Territories*. Department of Fisheries and Oceans Canada. Winnipeg, MB
- COSEWIC. 2014. *COSEWIC assessment and status report on the Nahanni Aster *Symphyotrichum nahanniense* in Canada*. Committee on the Status of Endangered Wildlife in Canada. Ottawa. ix + 39 pp. ([www.registrelep-sararegistry.gc.ca/default\\_e.cfm](http://www.registrelep-sararegistry.gc.ca/default_e.cfm)).
- Ecosystem Classification Group (ECG). 2010. *Ecological Regions of the Northwest Territories – Cordillera*. Department of Environment and Natural Resources, Government of the Northwest Territories, Yellowknife, NT, Canada. Available online at: [http://www.enr.gov.nt.ca/sites/enr/files/resources/cordillera\\_ecological\\_land\\_classification\\_report.pdf](http://www.enr.gov.nt.ca/sites/enr/files/resources/cordillera_ecological_land_classification_report.pdf)
- EDI. 2019. *HPAR Wildlife Baseline Studies – 2019 Field Season Results Summary*. Unpublished report.
- Horne, G. 2016. *Nahanni National Park Reserve, Report of Bat and Cave Monitoring - 2016*. Unpublished report.
- Horne, G. and D. Critchley. 2020. *Nahanni National Park Reserve, Report of Bat and Cave Monitoring – 2019*. Unpublished report.
- Lausen *et al.* 2014. *Bats of Nahanni National Park Reserve and Surrounding Areas, Northwest Territories*. *Northwestern Naturalist*. 95:186-196.
- Lausen, C. and G. Horne. Email, November 2017.
- Mackenzie Valley Resource Management Act (MVRMA). 2016. Available online at: <http://laws-lois.justice.gc.ca/eng/acts/M-0.2/>
- March, A.H. and G.W. Scotter. 1975. *Vegetation Survey and Impact Assessment of the Nahanni Hot Springs and Virginia Falls Areas, Nahanni National Park*. Prepared for Parks Canada by the Canadian Wildlife Service, Edmonton.
- Nahanni National Park Reserve. 2017. *Bear Observation Database*. Unpublished raw data.
- Parks Canada. 2010. *Nahanni National Park Reserve of Canada Nah?q Dehé Management Plan*.
- Parks Canada. 2013. *Cultural Resource Management Policy*.



Parks Canada. 2017. *Nááts'jch'oh National Park Reserve Management Plan*.

Parks Canada. 2019. Guidelines for Licensing of Guided River Outfitting in Nahanni and Nááts'jch'oh National Park Reserves. Available online at: [https://www.pc.gc.ca/en/pn-  
np/nt/nahanni/info/guides](https://www.pc.gc.ca/en/pn-<br/>np/nt/nahanni/info/guides)

Tate, D. 2017. Personal communication June 2017. Ecologist Team Leader, Lake Superior National Marine Conservation Area, Parks Canada.

Weaver, J.L. 2006. Big Animals and Small Parks: Implications of Wildlife Distribution and Movements for Expansion of Nahanni National Park Reserve. Wildlife Conservation Society Canada. Conservation Report No. 1.

## **12. REVIEW PERIOD**

The development description was sent to the MVEIRB, for posting on the public registry, and the distribution list on February 23, 2021. Anyone from the public could provide comments on or before March 17, 2021. On March 2, 2020 this activity was discussed by the Nah?ą Dehé Consensus Team. No concerns were raised by the cooperative management board or the public.


## **13. DECISION**

Taking into account the analysis and implementation of mitigation measures outlined in the analysis, the development:

- Might have a significant adverse impact on the environment, and the proposal should be referred to the *Mackenzie Valley Environmental Impact Review Board* for environmental assessment.
- ✓ Does not have a likelihood of causing significant adverse impact on the environment.
- Might be a cause for public concern, and the proposal should be referred to the *Mackenzie Valley Environmental Impact Review Board* for environmental assessment.
- ✓ Does not have a likelihood of causing public concern.

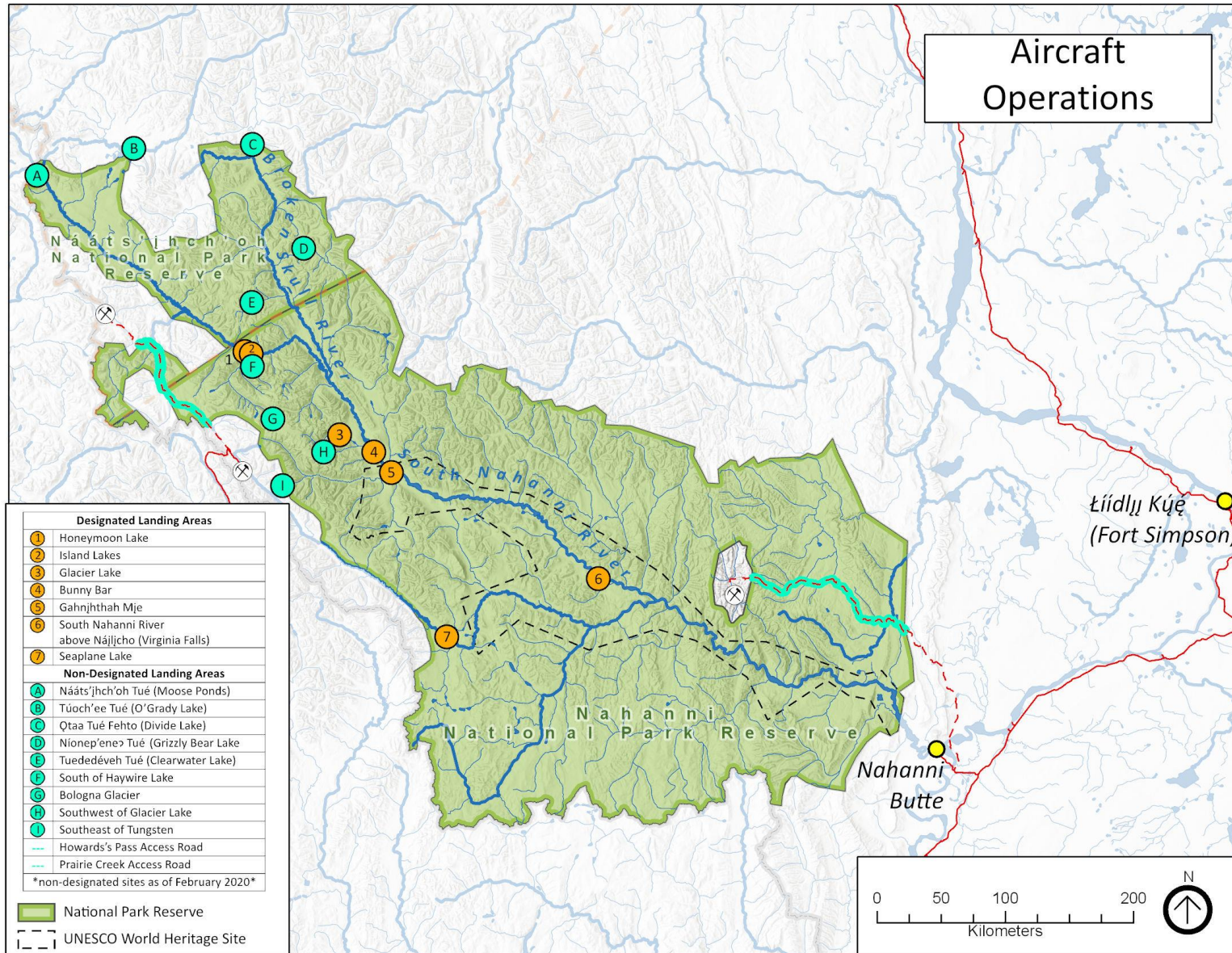


#### 14. APPROVAL

<b>Prepared by:</b> <i>Colleen Murchison</i> Ecologist Team Leader , Nahanni National Park Reserve	<b>Date:</b> March 17, 2021
<b>Approved by:</b>  <i>Johanna Robson</i> Superintendent, Nááts'ihch'oh National Park	<b>Date:</b> <i>Mar. 22, 2021</i>
<b>Approved by:</b> <b>Tsetso,</b> <b>Jonathan</b> <i>Jonathan Tsetso</i> Superintendent, Nahanni National Park Reserve	<b>Date:</b> Digitally signed by Tsetso, Jonathan Date: 2021.03.22 14:05:10 -06'00'

APPENDIX 1

Note: all flight start/end locations are from desigating airports/aerodromes outside of the parks.





**APPENDIX 2: Parks Canada Best Management Practice (BMP) for Aircraft Operations and Landings in Nahanni and Nááts'ihch'oh National Park Reserves of Canada**

Note: see attachment in accompanying email



### APPENDIX 3 - Distribution List

<i>Organization</i>	<i>Contact</i>
Mackenzie Valley Environmental Impact Review Board	preliminaryscreening@reviewboard.ca
Mackenzie Valley Land and Water Board	<a href="mailto:jpotten@mvlwb.com">jpotten@mvlwb.com</a> ; <a href="mailto:tyree@mvlwb.com">tyree@mvlwb.com</a>
Grand Chief Gladys Norwegian Dehcho First Nations	<a href="mailto:Gladys_Norwegian@dehcho.org">Gladys_Norwegian@dehcho.org</a>
Chief Jerry Antoine Liidlii Kue First Nation	<a href="mailto:chief@liidliikue.com">chief@liidliikue.com</a>
Chief Stanley Sanguéz JMR First Nation	<a href="mailto:chief@jmrfn.com">chief@jmrfn.com</a>
Chief Steve Vital Nahanni Butte Dene Band	<a href="mailto:chiefsteve.nbdb@gmail.com">chiefsteve.nbdb@gmail.com</a>
Chief Joachim Bonnetrouge Deh Gah Gotie First Nation	<a href="mailto:chief@dehgahgotie.ca">chief@dehgahgotie.ca</a>
Chief Lloyd Chicot Ka'a'gee Tu First Nation	<a href="mailto:kaageetu_chief@northwestel.net">kaageetu_chief@northwestel.net</a>
Chief Dolphus Jumbo Samba K'e Dene Band	<a href="mailto:chief@sambaakefn.com">chief@sambaakefn.com</a>
Chief Lloyd Moses Pehdzeh Ki First Nation	<a href="mailto:chief@pkfn.ca">chief@pkfn.ca</a>
Chief Courtney Cayen (via Misty Ireland, Lands Dept) West Point First Nation	<a href="mailto:land@wpfn.ca">land@wpfn.ca</a>
President Clifford McLeod Fort Providence Métis Nation	<a href="mailto:fpmcpres@northwestel.net">fpmcpres@northwestel.net</a>
President Marie Lafferty Fort Simpson Métis Local	<a href="mailto:metisnation52@northwestel.net">metisnation52@northwestel.net</a>
Keyna Norwegian	<a href="mailto:eaglefirelogistics@gmail.com">eaglefirelogistics@gmail.com</a>
Air Tindi	<a href="mailto:info@airtindi.com">info@airtindi.com</a>
Alpine Aviation	<a href="mailto:alpineaviation@gmail.com">alpineaviation@gmail.com</a>
Black Sheep Aviation & Cattle Co. Ltd.	<a href="mailto:info@flyblacksheep.ca">info@flyblacksheep.ca</a>
Great Slave Helicopters 2018	<a href="mailto:fortsimpson@gsheli.com">fortsimpson@gsheli.com</a>
Kluane Airways Ltd	<a href="mailto:info@kluaneairways.com">info@kluaneairways.com</a>
Liard Air Ltd	<a href="mailto:info@nrlodge.com">info@nrlodge.com</a>
Northern Rockies Air Charter Ltd.	<a href="mailto:info@scooplake.com">info@scooplake.com</a>
North-Wright Airways Ltd	<a href="mailto:ops@north-wrightairways.com">ops@north-wrightairways.com</a>
Simpson Air 1981 Ltd	<a href="mailto:simpsonair@northwestel.net">simpsonair@northwestel.net</a>
Solitude Excursions Ltd	<a href="mailto:hike@helihikenahanni.com">hike@helihikenahanni.com</a>
South Nahanni Airways	<a href="mailto:info@southnahanniairways.ca">info@southnahanniairways.ca</a> ; <a href="mailto:charters@southnahanniairways.ca">charters@southnahanniairways.ca</a>
Summit Air and Summit Helicopters	<a href="mailto:peter.rice@summithelicopters.ca">peter.rice@summithelicopters.ca</a> <a href="mailto:info@flysummitair.com">info@flysummitair.com</a>



Trans North Turbo Air Limited	<a href="mailto:dpachiorka@tntaheli.com">dpachiorka@tntaheli.com</a>
Tundra Helicopters	<a href="mailto:tundrahelicopters@hotmail.com">tundrahelicopters@hotmail.com</a>
Black Feather The Wilderness Adventure Company	<a href="mailto:info@blackfeather.com">info@blackfeather.com</a>
Nahanni Wilderness Adventures	<a href="mailto:adventures@nahanniwild.com">adventures@nahanniwild.com</a>
Canoe North Adventures	<a href="mailto:info@canoenorthadventures.com">info@canoenorthadventures.com</a>
Jennifer Thistle, Acting Regional Superintendent, Dehcho Industry, Tourism and Investment, Government of the Northwest Territories	<a href="mailto:Jennifer_Thistle@gov.nt.ca">Jennifer_Thistle@gov.nt.ca</a>
Douglas Dillon (Aboriginal Tourism Development Officer, Industry, Tourism and Investment - Tourism and Parks Division Government of the Northwest Territories)	<a href="mailto:Douglas_Dillon@gov.nt.ca">Douglas_Dillon@gov.nt.ca</a>
Cathie Bolstad (Executive Director, NWT Tourism)	<a href="mailto:executive@spectacularnwt.com">executive@spectacularnwt.com</a>
CPAWS, NWT Chapter	<a href="mailto:nwtadmin@cpaws.org">nwtadmin@cpaws.org</a>
Tulita Land/Financial Corporation	<a href="mailto:president@tulitalandcorp.ca">president@tulitalandcorp.ca</a> <a href="mailto:executivedirector@tulitalandcorp.ca">executivedirector@tulitalandcorp.ca</a>
Fort Norman Metis Land Corporation	<a href="mailto:rockynorwegian@gmail.com">rockynorwegian@gmail.com</a> <a href="mailto:execdirno60@gmail.com">execdirno60@gmail.com</a>
Norman Wells Land Corporation	<a href="mailto:hci2@theedgenw.ca">hci2@theedgenw.ca</a>
Tulita Renewable Resources Council	<a href="mailto:trrc@northwestel.net">trrc@northwestel.net</a>
Norman Wells Renewable Resources Council	<a href="mailto:sahtuapple@hotmail.com">sahtuapple@hotmail.com</a> <a href="mailto:nwrrc@nwlc.ca">nwrrc@nwlc.ca</a>
Tulita District Land Corporation	<a href="mailto:hci2@theedgenw.ca">hci2@theedgenw.ca</a> <a href="mailto:district@allstream.net">district@allstream.net</a>
Tulita Dene Band	<a href="mailto:tdbchief@live.ca">tdbchief@live.ca</a> <a href="mailto:band_manager@tulitadeneband.com">band_manager@tulitadeneband.com</a>
Hamlet of Tulita	<a href="mailto:rockynorwegian@gmail.com">rockynorwegian@gmail.com</a> <a href="mailto:SAO@hamleoftulita.ca">SAO@hamleoftulita.ca</a>
Town of Norman Wells	<a href="mailto:Mayor_Frank_Pope@normanwells.com">Mayor_Frank_Pope@normanwells.com</a> ; <a href="mailto:SeniorAdministrativeOfficer@normanwells.com">SeniorAdministrativeOfficer@normanwells.com</a>