



**DEVELOPMENT TITLE:** Marine Transportation Operations in Thaidene Nene National Park Reserve

**PROPOSED DEVELOPMENT DATES:** April 01, 2021 – March 31, 2022

**DEVELOPMENT DESCRIPTION:**

Thaidene Nene National Park Reserve is located on the East Arm of Great Slave Lake, in the Northwest Territories. The park reserve is part of Thaidene Nënë Indigenous Protected Area (IPA), which also includes a Territorial Protected Area and a proposed Wildlife Conservation Area (see map 1). Remote communities and local business operators rely on marine transportation companies for the safe delivery of critical supplies. Companies that wish to do business in a national park require a business licence<sup>1</sup>. Parks Canada conducts preliminary screenings before issuing/reissuing these types of authorizations to determine any public concern, or adverse environmental, social or cultural impacts according to the requirements of the *Mackenzie Valley Resource Management Act*.

This preliminary screening pertains to proposed marine transportation operations by Government of Northwest Territories Marine Transportation Services (MTS), which is applying for a 2021/2022 business licence reissuance for Thaidene Nene National Park Reserve. Marine transportation operations to Lutsel K'e and Reliance typically occur between early July and late September when Great Slave Lake is ice-free and weather conditions are favorable. Barging routes vary from year to year depending on the services required. The regular barging route to Łutsël K'é does not enter the National Park Reserve; however, the bad weather alternative route does.

Marine transportation operations include the activities and potential impacts of transporting and delivering dry cargo and bulk fuel for local residents, business operators, and park management. The following activities and locations are being proposed by MTS.

**Activities**

- Transportation and delivery of dry cargo, including foods and other assorted goods
- Transportation and delivery of bulk fuel

**Locations**

The following list includes the proposed barging route by MTS (map 2):

- Plummer's Lodge, Taltheilei Narrows (not in the park)
- Łutsël K'é and Frontier Lodge (alternate bad weather route through the park)
- Reliance

---

<sup>1</sup> National Parks of Canada Businesses Regulations, s. 4(1).

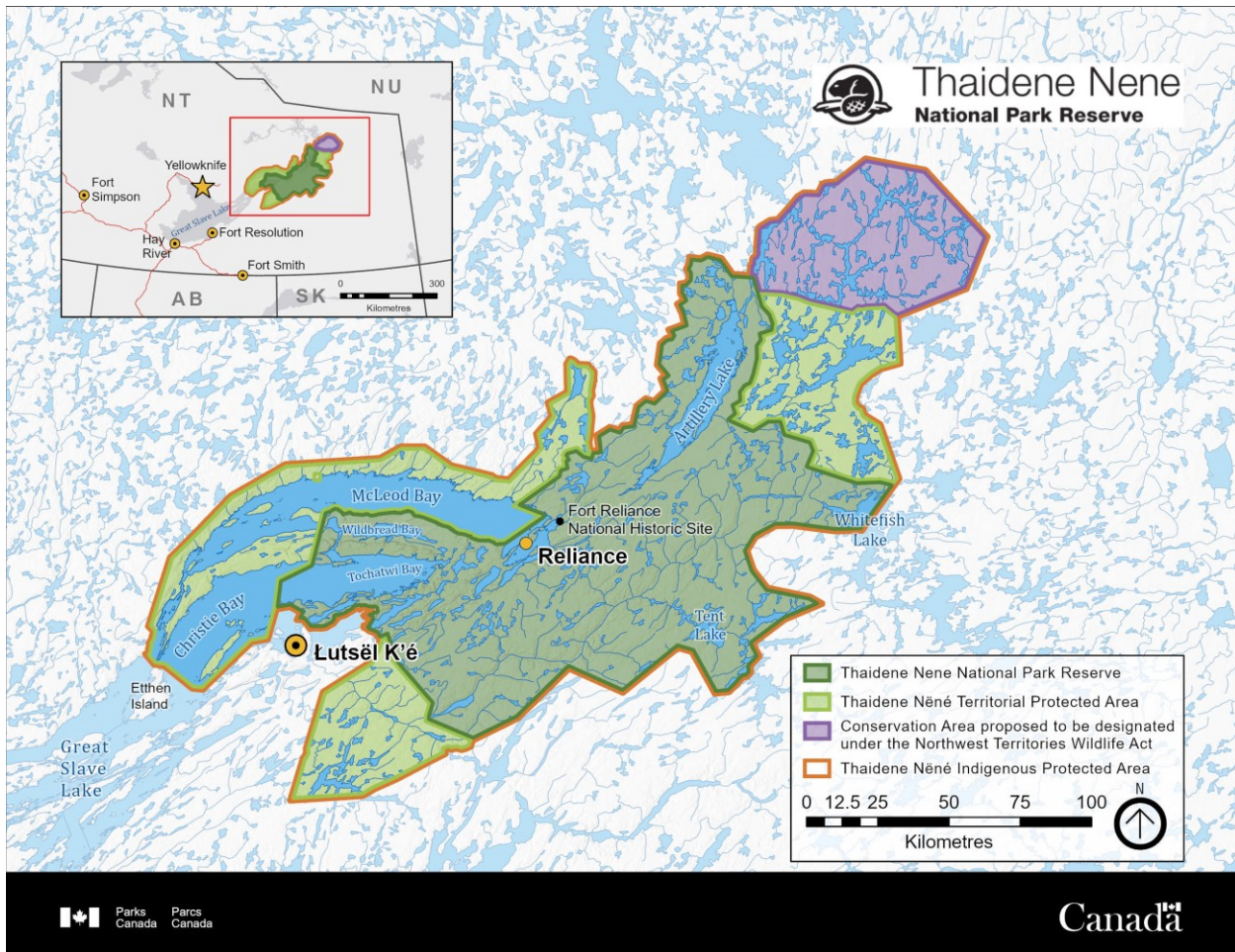


**MITIGATIONS:**

Operators will adhere to all Transport Canada rules and regulations pertaining to commercial vessel operations and the transportation of dangerous goods, and (when applicable) the mitigations described in the *“Interim Best Management Practices for Fuel Caching in Thaidene Nene National Park Reserve”*.



**Map 1:** Map of Thaidene Nene National Park Reserve, showing Thaidene Nënë Indigenous Protected Area, Territorial Protected Area, and a proposed Wildlife Conservation Area.





**Map 2: Proposed barging route for Government of Northwest Territories Marine Transportation Services in the East Arm**

Routes 2 and 3 transit into Thaidene Nene National Park Reserve

