

**Fuel Caching Protocol for Nahanni  
National Park Reserve and Nááts'ihch'oh  
National Park Reserve**

**Version 1**

**April 2018**

## REVISION HISTORY LOG:

The following table lists all edits and amendments to this document since the original publication date. Information entered in the log must be complete and concise. The protocol is an evolving document, therefore it is imperative to update the revision history log as refinements are made. Typically, new version numbers (and associated FUS approval) are reserved for major revisions such as changes in policy. Minor revisions such as procedural clarifications and editorial changes do not require new version numbers and can be approved by the Resource Conservation Manager.

<b>Date of Previous Version</b>	<b>Revision Date</b>	<b>Author(s) of Revision (title/affiliation)</b>	<b>Location in Document and Concise Description of Revision</b>	<b>Reason for Change</b>	<b>Change approved by</b>	<b>New Version Number</b>
Feb 2018	April 23 2018	J. Bastick (IA Specialist, National Office)	Reporting requirements updated, pages 16-18	Incorrect info in previous version	Jon Tsetso (April 27) & Laani Unila (April 24)	n/a

## Table of Contents

1.0	Introduction .....	3
2.0	Scope.....	3
3.0	Goals.....	4
4.0	Objectives .....	5
5.0	Fuel Cache Locations and Limits in Nahanni and Nááts'jch'oh.....	5
6.0	General Protocols for Fuel Caching .....	6
	Authorization.....	6
	Fuel Delivery.....	7
	Primary Containment and Spill Kits .....	7
	Secondary Containment .....	7
	Inventory .....	8
	Non-Compliance .....	8
7.0	Permitting Process for Caching Fuel in Nahanni and Nááts'jch'oh .....	8
8.0	Emergency Response and Spill Containment .....	9
9.0	Emergency Contact Information .....	9
10.0	Contact Information for Fuel Cache Coordinators .....	9
<b>Appendix 1:</b>	<b>Contents of Spill Kits.....</b>	<b>11</b>
<b>Appendix 2:</b>	<b>Examples of Secondary Containment Units used by Nahanni.....</b>	<b>12</b>
<b>Appendix 3:</b>	<b>Fuel Caching Request Form .....</b>	<b>13</b>
<b>Appendix 4:</b>	<b>Emergency Response and Spill Containment.....</b>	<b>16</b>
<b>Appendix 5:</b>	<b>NT and NU Spill Report Form.....</b>	<b>19</b>

## 1.0 Introduction

The *Fuel Caching Protocol for Nahanni National Park Reserve and Nááts'ihch'oh National Park Reserve* provides direction for the effective and safe management of fuel storage in Nahanni National Park Reserve (Nahanni) and Nááts'ihch'oh National Park Reserve (Nááts'ihch'oh). The protocol promotes best practices in fuel management such as cleanup of fuel caches and abandoned drums, inventory control, secondary containment, and spill response/reporting.

Nahanni caches fuel in support of park management activities and for emergency preparedness. Air charter companies cache aviation fuel to support the transport of visitors and park employees into remote areas of the park. Outfitter hunting has been discontinued, but in 2009 Nahanni inherited several old fuel caches associated with these operations in the park expansion area. Nahanni will complete the removal of these barrels from the park in 2018.

Abandoned and unpermitted fuel barrels are being removed from Nááts'ihch'oh. The majority of abandoned fuel barrels were left by hunting outfitters and mineral exploration teams prior to the park's creation. Leading up to the development of this policy, licensed air charter companies were asked if they required any fuel caches and the response was no. Moreover, Nááts'ihch'oh does not require caches for its operations; consequently, Nááts'ihch'oh does not have any designated fuel caches.

Other government departments/agencies and private individuals such as academic research partners accessing the parks for reasons related to park management, operations and/or research may apply to cache fuel in the parks.

Any fuel cached in the parks in contravention of this protocol will be removed and disposed of at the owner's expense.

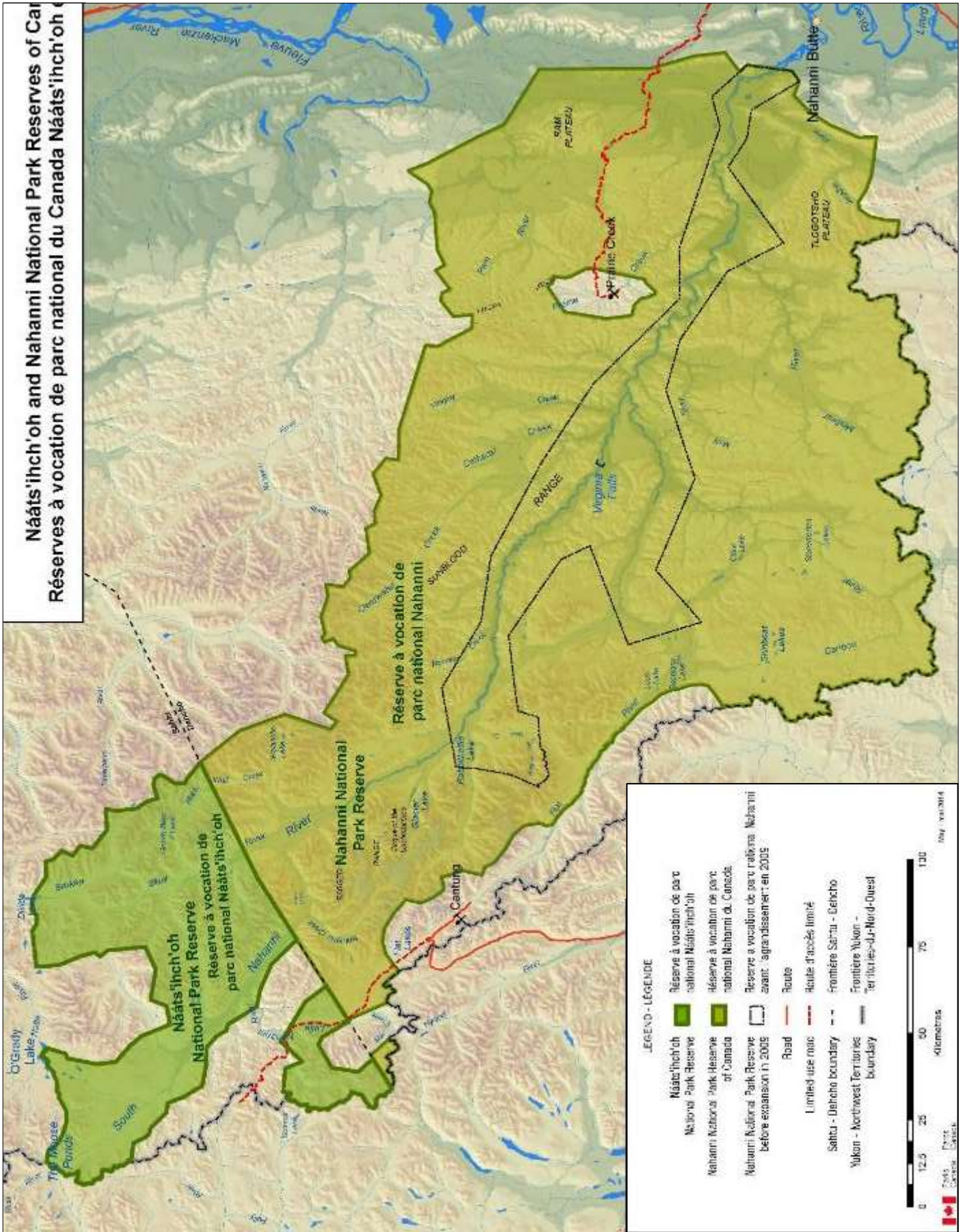
## 2.0 Scope

This protocol applies to the storage of fuel within Nahanni and Nááts'ihch'oh (Figure 1); it identifies the minimum standards required. Parks Canada will follow the protocols of the area of jurisdiction when storing fuel outside of the parks.

### Definitions:

- Fuel: Applies to aviation fuel, diesel, mixed gas, oil, white gas, and gasoline
- Primary Containment: Fuel drum or jerry can, or appropriate containers for white gas and oil.
- Secondary Containment: Fuel shed or berm with an impermeable fuel catchment basin to contain spilled fuel

**Nááts'ihch'oh and Nahanni National Park Reserves of Canada**  
**Réserves à vocation de parc national du Canada Nááts'ihch'oh et Nahanni**



**LEGEND - LEGENDE**

- Nááts'ihch'oh National Park Reserve
- Réserve à vocation de parc national Nááts'ihch'oh
- Nahanni National Park Reserve of Canada
- Réserve à vocation de parc national Nahanni du Canada
- Nahanni National Park Reserve before expansion in 2005
- Réserve à vocation de parc national Nahanni avant : agrandissement en 2005
- Road
- Route
- Limited use road
- Route d'accès limité
- Sasku - Dehcho boundary
- Frontière Sasku - Dehcho
- Yukon - Northwest Territories boundary
- Frontière Yukon - Territoires du Nord-Ouest

0 12.5 25 50 75 100 125 150 Kilometres

0 12.5 25 50 75 100 Miles

### 3.0 Goals

- Protect the ecological and cultural integrity of Nahanni and Nááts'ihch'oh through regulated fuel caching;
- Support Parks Canada's operational objectives and the operations of business license holders; and
- Limit visual impairment of the landscape in support of visitor experience.

### 4.0 Objectives

- Minimize the amount of fuel stored on national park lands for park management and operational needs;
- Centralize fuel cache locations;
- Improve inventory capacity and control the storage of fuel in Nahanni and Nááts'ihch'oh, and prevent the deterioration of drums due to handling, age, and corrosion;
- Minimize visual impairment and garbage at fuel cache locations;
- Improve fuelling practices with proper refueling and spill containment equipment at all cache locations; and
- Ensure that clear protocols are in place for fuel secondary containment and spill response.

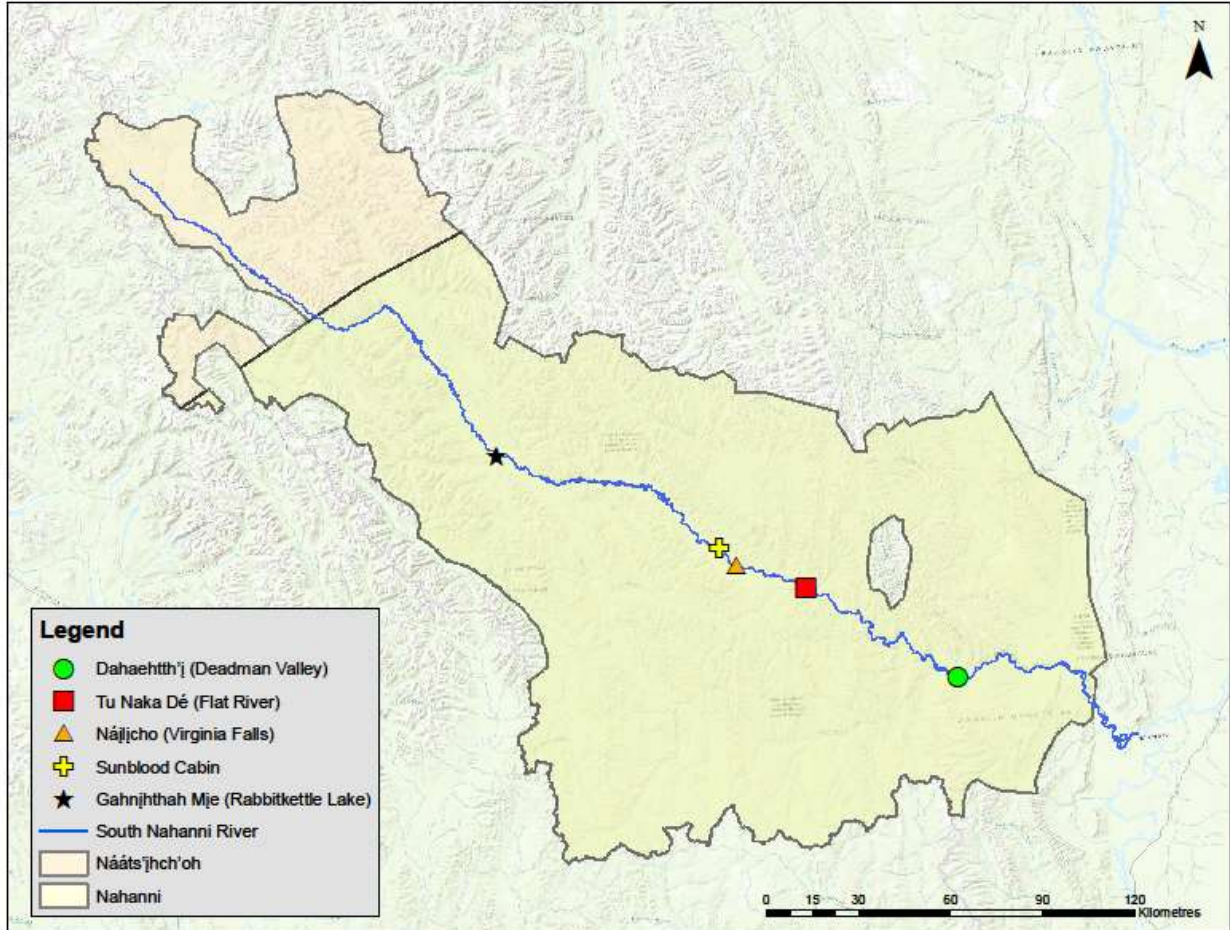
### 5.0 Fuel Cache Locations and Limits in Nahanni and Nááts'ihch'oh

There are no designated fuel caches within Nááts'ihch'oh. Five designated fuel caches are located in Nahanni for the purposes of park management and operations (Table 1 and Figure 2). No more than 20 full 205 liter drums, or a total of 4100 liters, may be stored at a cache location. Upon request, the relevant Park Superintendent will consider requests for fuel caching at designated sites and outside designated sites at a temporary fuel cache.

**Table 1.** Designated fuel cache locations in Nahanni

Location	Latitude	Longitude	Primary Containment	Secondary Containment	PCA use	Air Charter Company Use
Dahahtth'j (Deadman Valley)	61° 14' 40"	124° 26' 38"	Fuel drum, Jerry cans	Fuel Shed (x 2)	Yes	No
Tu Naka Dé (Flat River)	61° 32' 00"	125° 20' 00"	Fuel drum, Jerry cans	Fuel Shed	Yes	No
Nájljcho (Virginia Falls)	61° 36' 26"	125° 45' 12"	Jerry cans	Storage Bin with sorbent pads	Yes	No
Sunblood Cabin	61° 39' 51"	125° 51' 05"	Fuel drum, Jerry cans	Fuel Shed (x 2)	Yes	No
Gahnjthah Mje (Rabbitkettle Lake)	61° 57' 33"	127° 12' 18"	Fuel drum, Jerry cans	Fuel Shed	Yes	Upon Request

**Figure 2.** Designated fuel cache locations in Nahanni



## 6.0 General Protocols for Fuel Caching

### Authorization:

- A permit from the relevant Park Superintendent or his/her designate is required before caching fuel in Nahanni or Nááts'ihch'oh at a designated or temporary cache. The process for acquiring this permit is detailed in Section 7.0.
- Fuel must be cached at the location authorized in the permit by the Park Superintendent, be it a designated cache or approved temporary cache.
- All fuel stored in Nahanni and Nááts'ihch'oh is subject to this general protocol.
- The permitted period of occupancy for all fuel containers (full, partial, and empty) at fuel cache locations may not exceed two years from the date placed at the site. Fuel left beyond the time period authorized will be removed and disposed of at the owner's expense.

### **Fuel Delivery:**

- Avoid rough handling of fuel containers.
- Delivery of fuel containers will include visual inspection of all seams and bungs/lids for signs of leakage before placement at each fuel cache location. Primary containment units that appear to be leaking must not be stored in the park.
- Delivery of fuel will include placement of fuel containers in approved secondary containment.
- Fuel drums stored in fuel shed units must be stored upright and not stacked. Fuel drums stored in other secondary containment units such as berms must be stored laying on their side with the bungs parallel to the ground.

### **Primary Containment and Spill Kits:**

- All fuel must be stored in new or reconditioned containers that are not damaged, rusted, or leaking.
- All caches must be located at least 100 metres away from the ordinary high water mark of any water body including ephemeral drainages. Exceptions can be made upon approval from the relevant Park Superintendent.
- All fuel containers must be clearly marked with:
  - Workplace Hazardous Materials Information System (WHMIS) label which must clearly identify the product contained
  - Year and date placed at the cache site, and
  - Responsible department/agency, company or private individual.
- Unless being used immediately for a park operational project where Park staff are consistently on-site to prevent damage from bears, jerry cans, oil and white gas containers can only be stored in locations with secure secondary containment such as the fuel sheds at Nahanni's designated caches. If being used immediately, these containers may be placed in temporary secondary containment such as a portable open berm.
- Parks Canada provides a spill kit at each designated fuel cache site (Appendix 1). Please contact the Nahanni Fuel Cache Coordinator so you are aware of the spill kit location.
- Spill kits, supplied by the applicant, are required for temporary fuel storage at any non-designated fuel cache sites authorized by a Park Superintendent.

### **Secondary Containment:**

- All full/partial fuel containers must be stored in secondary containment units, at both designated and temporary non-designated fuel cache sites (empties may be stored outside the secondary containment unit). Secondary containment units will have an impermeable fuel catchment basin to contain spilled fuel. Due to the remote nature of the parks, secondary containment units must be convenient to transport by an aircraft class available in Łíídlıı Kúę (Fort Simpson) and Norman Wells or surrounding communities (e.g.: helicopter or Twin Otter)
- Proponents are responsible for providing secondary containment and a spill kit at their temporary cache site.

- In the event of a spill, the proponent is responsible for cost of cleanup.
- The secondary containment unit must be capable of containing a volume of spilled fuel 25% greater than the capacity of the largest fuel container placed therein (e.g. if the largest fuel container is a 205 litre drum, the secondary containment unit must be capable of containing a spill of 255 litres). Note that the fuel containment capacity requirements of any unit will be subject to the discretion of the Park Superintendent or his/her designate and may increase depending on factors such as quantity of fuel to be cached in the unit and type of containment unit employed.
- The unit must be weatherproofed to keep water and snow out of the containment area using a system that can easily be accessed and secured by fuel cache users, and requires limited upkeep.
- All secondary containment units at designated fuel caches in Nahanni will be locked with air charter companies given keys as required.
- See Appendix 2 - *Examples of Secondary Containment Units used by Nahanni*

### **Inventory:**

At the end of each summer field season (mid-September) Nahanni staff will complete an updated inventory for designated cache sites by fuel type, storage type (drum, jerry can, or other), and year placed at the site, indicating the number of full, partial, and empty containers remaining.

Temporary fuel cache permit holders are responsible for providing updated information to the relevant park for any fuel they have stored in their permitted temporary fuel cache following the summer field season (mid-September), or by the date indicated in their authorization.

### **Risk Mitigation:**

Unmarked fuel, or fuel stored in non-compliance with this policy, will be dealt by Parks Canada to mitigate the environmental risk – which could include removal and disposal.

## **7.0 Permitting Process for Caching Fuel in Nahanni and Nááts'ihch'oh**

This permitting process applies only to external applicants such as air charter companies, other government departments/agencies, and private individuals such as academic research partners wishing to cache fuel within Nahanni and/or Nááts'ihch'oh. It does not apply to fuel purchased and stored by Parks Canada.

- Plan for a **minimum of 60 days** from submission of the written request to receipt of authorization.
- Contact the appropriate Fuel Cache Coordinator (Section 10.0) early in the planning process to discuss caching needs and the application process.
- Complete the Fuel Caching Request Form (Appendix 3) and send it to the relevant Fuel Cache Coordinator.

- If approved, a permit will be issued by the Park Superintendent or his/her designate, providing permission to place fuel on lands administered by Parks Canada subject to the general protocols outlined in this protocol. Additional terms and conditions may be applied at the discretion of the Superintendent.

## **8.0 Emergency Response and Spill Containment**

A summary of steps to take to manage damaged fuel containers and/or to contain, clean and report fuel spills is found in Appendices 4 and 5.

## **9.0 Emergency Contact Information**

Nahanni National Park Reserve- Duty Officer  
867-695-3732

Nahanni National Park Reserve – Main Office  
867-695-7750

Jonathon Tsetso – Superintendent, Nahanni National Park Reserve  
867-695-7753

David Walker – Resource Conservation Manager, Nahanni National Park Reserve  
867-695-7752

Nááts'ihch'oh National Park Reserve – Main Office  
867-588-4884

Laani Uunila – Superintendent, Nááts'ihch'oh National Park Reserve  
867-588-4884

Faye D'Eon-Eggertson, Resource Management Supervisor, Nááts'ihch'oh National Park Reserve  
867-588-4885

Northwest Territories Spill Line  
867-920-8130

## **10.0 Contact Information for Fuel Cache Coordinators**

For questions about this protocol or fuel caching in Nahanni contact:

Nahanni Fuel Cache Coordinator	Nááts'ihch'oh Fuel Cache Coordinator
Nahanni Asset Manager	Resource Management Supervisor
867-695-7751	

**APPROVAL PAGE**

Fuel Caching Protocol for Nahanni National Park Reserve and Nááts'ihch'oh National Park Reserve

**PROTOCOL PREPARED BY:**

Brianna Robinson  
Resource Management Officer  
Nahanni National Park Reserve

**APPROVED BY:**



Jonathan Tsetso  
Superintendent,  
Nahanni National Park Reserve

February 21, 2018

Date



Laani Uunila  
Superintendent,  
Nááts'ihch'oh National Park Reserve

February 21, 2018

Date

## **Appendix 1: Contents of Spill Kits**

Parks Canada provides a spill kit (for oil and fuel only) at each designated fuel cache site in Nahanni National Park Reserve. The kit is contained within a 55 Gal. blue H.D. polyethylene drum. Please contact the Fuel Cache Coordinator so you are aware of the spill kit location at the designated fuel cache site.

Each kit includes:

- 1 x 55 Gal Blue Poly Drum with lid and band
- 100 x Sorbent Pads (17"x19") 12oz
- 4 x Sorbent Socks (96"x 3")
- 12 x Sorbent Socks (48"x 3")
- 20 x Hand Wipes
- 6 x Disposal Bags with ties
- 1 x 20lb Granular All Purpose Absorbent
- 1 x Knife
- 1 x Duct Tape
- 3 x Dust Masks
- 2 x prs. Green Nitrile Gloves
- 2 x prs. Goggles
- 3 x prs. Disposable Coveralls
- 1 x Instruction Sheet
- 1 x Plug-n-Dyke drum calking (dry) 1 x Shovel
- 2 x Tarpaulins

For more information on spill kits:

- **Acklands Grainger Inc.** - [www.acklandsgrainger.com](http://www.acklandsgrainger.com)
- **Arcus Absorbents Inc.** - [www.arcusabsorbents.com](http://www.arcusabsorbents.com)
- **Can-Ross Environmental Services Ltd.** - [www.canross.com](http://www.canross.com)

## **Appendix 2: Examples of Secondary Containment Units used by Nahanni**

### **Secondary Containment**

Nahanni National Park currently uses fuel sheds as secondary containment systems. These are designed to minimize environmental damage from a fuel spill resulting from a failure in the fuel container, a loose bung/lid, or damaged bung seal.

### **Example Fuel Shed used in Nahanni**



*Pro-tec* [www.laden.ca](http://www.laden.ca)

**Appendix 3: Fuel Caching Request Form**

See following two pages

# PARKS CANADA FUEL CACHING REQUEST FORM

## (Nahanni and Nááts'ihch'oh National Park Reserves)



Please plan for a minimum of 60 days from the submission date of your written request to receipt of the permit. Contact the fuel caching coordinator for the park where you wish to cache fuel early in your planning process to discuss your caching needs and the application of general protocols.

Contact Information	
Department/Agency/Company/Individual	Date
Name	Title
Project	
Address	
Telephone Number	Email
Emergency Contact Number:	

Where would you like to cache fuel?				
Fuel Cache Location (check one)	Fuel Type	# of Drums/ Jerry Cans/other*	Date Placed at Site	Removal Date**
<input type="checkbox"/> Dahahtth'j (Deadman Valley)				
<input type="checkbox"/> Tu Naka Dé (Flat River)				
<input type="checkbox"/> Nájljicho (Virginia Falls)				
<input type="checkbox"/> Sunblood Cabin				
<input type="checkbox"/> Gahnjthah Mje (Rabbitkettle Lake)				
<input type="checkbox"/> Other : _____ _____ _____ (park and UTM)				

\* No more than 20 full barrels may be stored at a cache location. "Other" refers to containers for white gas and oil that are not jerry cans.

\*\* The permitted period of occupancy for all fuel containers (full, partial, and empty) at fuel cache locations may not exceed two years from the date placed at the site.

**PARKS CANADA FUEL CACHING REQUEST FORM**  
**(Nahanni and Nááts'ihch'oh National Park Reserves)**



<b>Do you currently have fuel drums cached in Nahanni or Nááts'ihch'oh?</b>					
Fuel Cache Location	Fuel Type	# full drums/jerry cans/other (#liters)	# partial drums/jerry cans/other (# liters)	# empty drums/jerry cans/other	Year placed at site

**Additional Details on Protocol Compliance**

On a separate page to be submitted with your Fuel Caching Request Form, briefly outline your plan to comply with this fuel caching protocol including: name of air charter company to be used for fuel delivery, schedule and budget for deployment and removal of fuel, description of secondary containment system and spill kit to be used, distance of cache away from water, incidence response, and any other best practices you intend to implement.

<b>Send Completed Fuel Caching Request Form to the Applicable Fuel Cache Coordinator</b>	
<p>Nahanni Fuel Cache Coordinator                      Nahanni Asset Manager                      Parks Canada - Nahanni National Park Reserve                      P.O. Box 348                      Fort Simpson, Northwest Territories                      X0E 0N0</p> <p>E-mail: <a href="mailto:Nahanni.Info@pc.gc.ca">Nahanni.Info@pc.gc.ca</a></p> <p>Telephone: 867-695-7751</p>	<p>Nááts'ihch'oh Fuel Cache Coordinator                      Resource Management Supervisor                      Parks Canada - Nááts'ihch'oh National Park Reserve                      P.O. Box 157                      Tulita, N.T.                      X0E 0K0</p> <p>E-mail: <a href="mailto:Naats'ihch'oh.Info@pc.gc.ca">Naats'ihch'oh.Info@pc.gc.ca</a></p> <p>Telephone: 867-588-4884</p>

## **Appendix 4: Emergency Response and Spill Containment**

### **Drum/jerry can damaged? Follow the instructions below:**

1. Maneuver drum/jerry can so damage is on top to reduce leaking.
2. Put the drum/jerry can in secondary containment.
3. Drums/jerry cans may be patched by using the Plug-n-Dike provided in spill kit.
4. Mark damaged drums/jerry cans immediately so contents are not re-used.
5. Remove drums/jerry cans from site immediately. The removal of damaged drums/jerry cans is an operational priority.

### **Spill occurred? Follow the instructions below:**

Use spill kits to contain and clean-up:

- Use appropriate PPE
- Take absorbents from spill kit and soak up as much free product as possible. The shovel provided may be used to dig up product-soaked soil.
- Use booms to skim contaminants off the top of the water.
- Place contaminated absorbents and contaminated soil in spill kit drum and/or use tarps provided.
- Remove contaminated material from site immediately being aware of proper procedures for transporting dangerous goods. The removal of these materials is an operational priority.

1. Immediately report spills to the relevant Parks Canada fuel cache coordinator. If the staff listed above are unavailable please call the Duty Officer (between June 15<sup>th</sup> and September 30<sup>th</sup>) at 867-695-3732 or the Nahanni main office at 867-695-7750 or the Nááts'ihch'oh office at 867-588-4884.
2. When applicable, spills must be reported to the Northwest Territories Spill Line at 1-867-920-8130. See table below for reportable quantities. Note that **all spills** that occur in or near open water, are near or in a designated sensitive environment or habitat; pose an imminent threat to human health or safety; or pose an imminent threat to a listed species at risk or its critical habitat **must be reported** (obtained April 2018 from: <http://www.enr.gov.nt.ca/en/services/spills/reporting-spills>).

Fill out the spill report form (Appendix 5) <http://www.enr.gov.nt.ca/file/3253> and return by fax to 1-867-873-6924 or email to [spills@gov.nt.ca](mailto:spills@gov.nt.ca). Provide a copy of the form to the relevant Parks Canada Fuel Cache Coordinator.

NOTE: Because Parks Canada is not a signatory to the NWT-NU Spills Working Agreement ([http://www.enr.gov.nt.ca/sites/enr/files/nwt-nu\\_spills\\_working\\_agreement\\_2014\\_2\\_0.pdf](http://www.enr.gov.nt.ca/sites/enr/files/nwt-nu_spills_working_agreement_2014_2_0.pdf)):

- If a spill occurs within PCA boundaries and is caused by PCA, PCA must still report to the NWT Spill Line. Environment Canada will act as the "operating federal agency" (OFA); but operationally, PCA will lead clean-up efforts.
- If a spill occurs within PCA boundaries and is caused by someone other than PCA, they must report to the NWT Spill Line. Environment Canada will act as the "operating federal agency" (OFA) and will coordinate clean-up efforts with PCA.
- If the spill occurs directly into water, the above scenarios apply. However, the GNWT will also be notified and will coordinate with ECCC and PCA.

## Reportable Quantities for NWT Spills

Note: L = litre; kg = kilogram; PCB = Polychlorinated Biphenyls; ppm = parts per million

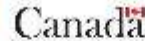
Substance	Reportable Quantity	TDG Class
Explosives	Any amount	1.0
Compressed gas (toxic/corrosive)		2.3/2.4
Infectious substances		6.2
Sewage and Wastewater (unless otherwise authorized)		6.2
Radioactive materials		7.0
Unknown substance		None
Compressed gas (Flammable)	Any amount of gas from containers with a capacity greater than 100L	2.1
Compressed gas (Non-corrosive, non-flammable)		2.2
Flammable liquid	≥100 L	3.1/3.2/3.3
Flammable solid	≥ 25 kg	4.1
Substances liable to spontaneous combustion		4.2
Water reactant substances		4.3
Oxidizing substances	≥ 50 L or 50 kg	5.1

Substance	Reportable Quantity	TDG Class
Organic peroxides Environmentally hazardous substances intended for disposal	≥1 L or 1 kg	5.2 9.0
Toxic substances	≥ 5 L or 5 kg	6.1
Corrosive substances Miscellaneous products, substances or organisms		8.0 9.0
PCB mixtures of 5 or more ppm	≥ 0.5 L or 0.5 kg	9.0
Other contaminants--for example, crude oil, drilling fluid, produced water, waste or spent chemicals, used or waste oil, vehicle fluids, wastewater.	≥ 100 L or 100 kg	None
Sour natural gas (i.e., contains H <sub>2</sub> S) Sweet natural gas	Uncontrolled release or sustained flow of 10 minutes or more	None
Flammable liquid Vehicle fluid	≥ 20 L When released on a frozen water body that is being used as a working surface	3.1/3.2/3.3 None
Reported releases or potential releases of any size that: <ol style="list-style-type: none"> <li>1. are near or in an open water body;</li> <li>2. are near or in a designated sensitive environment or habitat;</li> <li>3. Pose an imminent threat to human health or safety; or</li> <li>4. Pose an imminent threat to a listed species at risk or its critical habitat</li> </ol>	Any amount	None

**Appendix 5: NT and NU Spill Report Form**

**NT-NU SPILL REPORT**

OIL, GASOLINE, CHEMICALS AND OTHER HAZARDOUS MATERIALS



NT-NU 24-HOUR SPILL REPORT LINE  
Tel: (867) 920-8130 • Fax: (867) 873-6924 • Email: [spills@gov.nt.ca](mailto:spills@gov.nt.ca)

REPORT LINE USE ONLY

A	Report Date: MM DD YY	Report Time:	<input type="checkbox"/> Original Spill Report <b>OR</b> <input type="checkbox"/> Update # _____ to the Original Spill Report		Report Number:
	Occurrence Date: MM DD YY	Occurrence Time:			
C	Land Use Permit Number (if applicable):		Water Licence Number (if applicable):		
D	Geographic Place Name or Distance and Direction from the Named Location:			Region: <input type="checkbox"/> NT <input type="checkbox"/> Nunavut <input type="checkbox"/> Adjacent Jurisdiction or Ocean	
E	Latitude: _____ Degrees _____ Minutes _____ Seconds		Longitude: _____ Degrees _____ Minutes _____ Seconds		
F	Responsible Party or Vessel Name:		Responsible Party Address or Office Location:		
G	Any Contractor Involved:		Contractor Address or Office Location:		
H	Product Spilled: <input type="checkbox"/> Potential Spill	Quantity in Litres, Kilograms or Cubic Metres:	U.N. Number:		
I	Spill Source:	Spill Cause:	Area of Contamination in Square Metres:		
J	Factors Affecting Spill or Recovery:	Describe Any Assistance Required:	Hazards to Persons, Property or Environment:		
K	Additional information: Comments, Actions Proposed or Taken to Contain, Recover or Dispose of Spilled Product and Contaminated Materials				
L	Reported to Spill Line by:	Position:	Employer:	Location Calling From:	Telephone:
M	Any Alternate Contact:	Position:	Employer:	Alternate Contact Location:	Alternate Telephone:

REPORT LINE USE ONLY

N	Received at Spill Line by:	Position:	Employer:	Location Called:	Report Line Number:
Lead Agency: <input type="checkbox"/> EC <input type="checkbox"/> CCG/TCMSS <input type="checkbox"/> GNWT <input type="checkbox"/> GN <input type="checkbox"/> ILA			Significance: <input type="checkbox"/> Minor <input type="checkbox"/> Major <input type="checkbox"/> Unknown		File Status: <input type="checkbox"/> Open <input type="checkbox"/> Closed
<input type="checkbox"/> AANDC <input type="checkbox"/> NEB <input type="checkbox"/> Other: _____					
Agency:	Contact Name:	Contact Time:	Remarks:		
Lead Agency:					
First Support Agency:					
Second Support Agency:					
Third Support Agency:					