



April 14, 2026

EA2526-01

# **Environmental Assessment Closure and Reclamation – Imperial’s Norman Wells Facilities**

## **Community Open House in Tłegóhıı (Norman Wells)**



This report summarizes the discussion from the Mackenzie Valley Environmental Impact Review Board (Review Board)'s community open house in Tłegóhłı on April 14, 2026. The Review Board held this open house (see Appendix A for the public advertisement) to help parties and community members understand the environmental assessment process for the closure and reclamation of Imperial's Norman Wells Facilities and introduce parties to the language of closure planning from the *Guidelines for the Closure and Reclamation of Advanced Mineral Exploration and Mine Sites in the Northwest Territories (Closure Guidelines)*.



Figure 1 Community members at the legion.

The Review Board held an open house in Tłegóhłı (Norman Wells) from 2-7PM at the Royal Canadian Legion. Members of the community, Government of the Northwest Territories, Government of Canada, and Tłegóhłı Got'ıne Government were present, along with representatives from Imperial (see Appendix B for the attendee list). Review Board staff made a presentation (Appendix C) and answered questions about the environmental assessment process, the closure planning process and next steps. The presentation provided an overview of closure planning, key concepts of closure planning (goals, principles, objectives, and actions) and the environmental assessment process.



*Figure 2: MLA Daniel Mcneely at the Legion*

There were questions regarding the scope of the work that Imperial would be required to do. A participant asked about how much of the area Imperial would be required to reclaim – if Imperial’s responsibilities extended outside of the facilities in the town of Norman Wells or if responsibilities were more limited. The Review Board noted that Imperial is responsible for remediating the impacts of the oilfield and is not bound by its footprint in the town or even within the Norman Wells Proven Area.



Figure 3 Mark Cliffe-Phillips (ED of the Review Board) and Imperial representatives at the Legion..

Participants asked questions regarding the timeline for closure and wanting to ensure that training is in place to maximize northern benefits through employment and procurement. MLA McNeely noted that businesses and community members need support from Imperial now to be able to prepare and train people. He stated that training must occur sufficiently prior to closure activities starting to allow community members and businesses to be prepared for opportunities. Imperial noted they are working with Sahtu United Inc presently and are open to working with other groups to help Sahtu organization benefit from closure. People also had questions about measuring the success of a criteria like maximizing northern benefits. Review Board staff pointed out that some diamond mines have Socio-Economic Agreements where reporting on hires and training form part of the agreement.

One participant asked about the closure working group that Imperial has struck and was interested in who was on the working group, what type of information was being shared, and what the role of the working group is. Imperial responded that they will seek agreement with the working group to share information including the Terms of Reference for the working group. There was a sense that Imperial was hiding information and should share more publicly.

**Appendix A – Poster**

**Appendix B – Participants list**

**Appendix C - Review Board's presentation**





# Review Board Open House

## Tłegóhtı (Norman Wells)

A discussion on the  
Environmental Assessment Process  
of Imperial Oil's Closure

**Tuesday, April 14, 2026**

**Royal Canadian Legion #287**

**2:00 - 7:00 PM**

**Snacks and dinner provided**



**For more information please contact:**

**Melissa Pink (867) 766-7052 | [mpink@reviewboard.ca](mailto:mpink@reviewboard.ca) or  
Donna Schear (867) 445-8096 | [dschear@reviewboard.ca](mailto:dschear@reviewboard.ca)**

## Open House – Discussion on the EA Process – Imperial Oil's Closure

Location: Tteqóhtj (Norman Wells) – Royal Canadian Legion Meeting Date: Tuesday April 14, 2026

Contact: Melissa Pink [mpink@reviewboard.ca](mailto:mpink@reviewboard.ca) or Donna Schear [dschear@reviewboard.ca](mailto:dschear@reviewboard.ca)

| Name                   | Organization         | Optional: Email or Phone Number |
|------------------------|----------------------|---------------------------------|
| 1. Crystal Wegermashki | ECC                  | crystal.wegermashki@egou.ni.ca  |
| 2. Dawni Pedrick       | HCA                  |                                 |
| 3. Neil Darlow         | Imperial             | neil.darlow@esso.ca             |
| 4. John Bertrand       | Imperial             | john.a.bertrand@esso.ca         |
| 5. Leanna Han          | Imperial             | leanna.han@esso.ca              |
| 6. Sarah McLaren       | Imperial             | sarah.j.mclaren@esso.ca         |
| 7. Sarah Baker         | Imperial             | site@shhth.org                  |
| 8. Lisa Duncan         | Imperial             | lisa.a.duncan@personmobil.com   |
| 9. Daminder Singh      | SNWT                 | daminder.singh@egor.nrc.ca      |
| 10. Charles Roy        | SNWT                 | charles.roys88@icloud.com       |
| 11. ALAIN GAGNON       | Leam Nor NPMO        | Alain.Gagnon@caamwv.gc.ca       |
| 12. GARRY ROSE         | PUBLIC               |                                 |
| 13. FRANK ROSE         | TOWN                 |                                 |
| 14. Alenda James       | <del>Health Bd</del> | gkenyon18@chotmai.com           |

## Open House – Discussion on the EA Process – Imperial Oil's Closure

Location: Tregóhtj (Norman Wells) – Royal Canadian Legion | Meeting Date: Tuesday April 14, 2026

Contact: Melissa Pink [mpink@reviewboard.ca](mailto:mpink@reviewboard.ca) or Donna Schear [dschear@reviewboard.ca](mailto:dschear@reviewboard.ca)

| Name                 | Organization | Optional: Email or Phone Number |
|----------------------|--------------|---------------------------------|
| 15. DAWN SMITH       |              | janes200@outlook.com            |
| 16. Salina Perry     | GNWT - ECE   | salina-perry@gov.nt.ca          |
| 17. WYATT KUMMER     |              |                                 |
| 18. Olivia Kummer    |              |                                 |
| 19. SIMONNE EL AGRO  | GNWT - FCC   |                                 |
| 20. Annis Wabund     |              |                                 |
| 21. Alexis Peachey   | SRPP         | apeachey@srppnorth.com          |
| 22. Face Hunter      | GNWT - ITI   | kace-hunter@gov.nt.ca           |
| 23. Quinn Lynd       | GNWT - NTHSA | 775-891-7522                    |
| 24. Jaelin McSarsid  | TGLS         | 446-5210                        |
| 25. Merrick McSarsid | TGLS         |                                 |
| 26. Beverly McSarsid |              | 446-9620                        |
| 27.                  |              |                                 |
| 28.                  |              |                                 |

# Norman Wells Closure Environmental Assessment

Meeting, Norman Wells  
April 14, 2026



# Meeting overview

- **Why we are here and why this environmental assessment matters**
- **Walk through the environmental assessment process**
  - Phase 1: Development of the Closure Plan
  - Phase 2: Assessing the Closure Plan
- Talk about the **language of closure**

# Why we are here

## **Build a shared understanding of the closure planning process**

- the closure planning process decides what will happen to land, water, and remaining infrastructure when operations end

**We'll clarify the step-by-step process and key terms, so everyone can participate confidently**



# Closure Planning in EA

- the EA process is about understanding impacts from 100 years of operations and how to close and reclaim the site
- how closure can result in a legacy of benefits and opportunities that supports intergenerational goals for future land users



# Developing the closure plan (Phase 1) - your role in closure



- community members, Elders, and land users bring traditional and local knowledge
- Indigenous Governments help bring community input
- **your input** helps define what must be protected or restored, what “safe” means in real terms, and what future land use should look like
- participate through workshops, plain-language reviews, stories, observations, and questions—then stay involved in monitoring and follow-up



# What is in a closure plan?

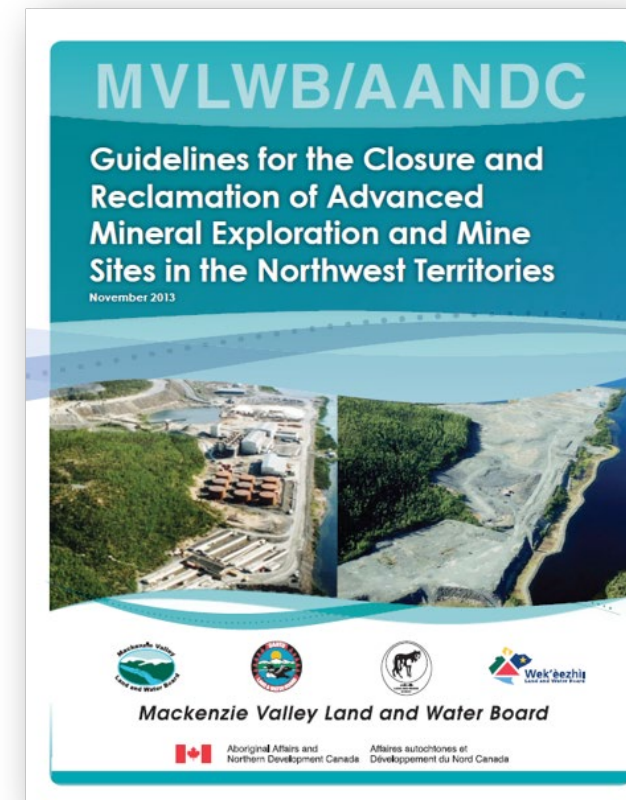
Detailed description of:

- the condition of the site now
- the **vision for the site in the future**
- the work required to clean the site to achieve the vision
- how the work will be carried out
- how the work be monitored
- how we will know the work has been successful

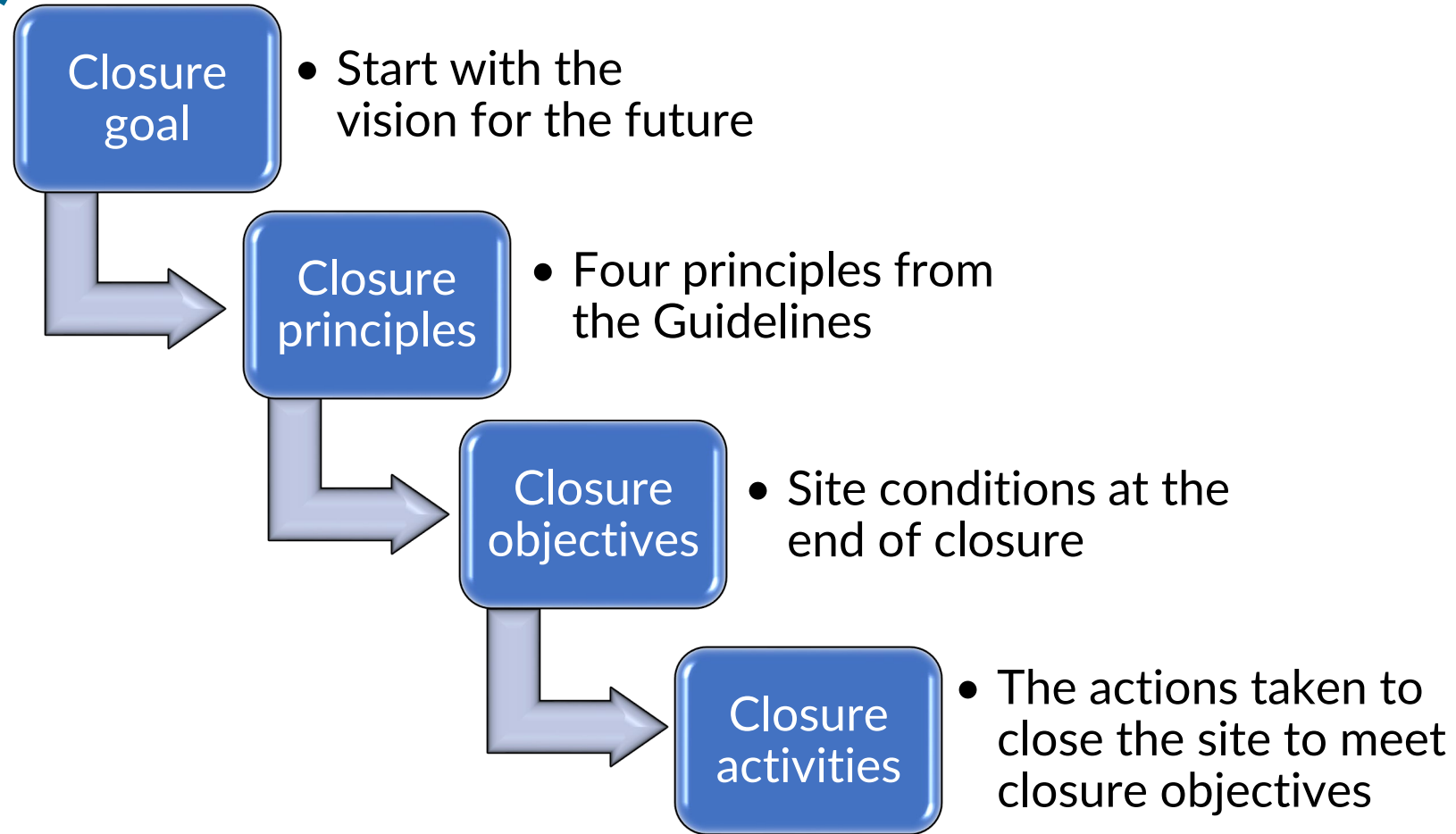


# Closure planning in this EA

- define what successful closure looks like
- set clear closure goals and measurable criteria to track progress
- use community knowledge and technical expertise to shape closure objectives
- Imperial to develop an updated closure plan that is practical, respectful of culture, and grounded in local knowledge
- assess the updated closure plan



# Defining the closure plan (Phase 1)



# Defining closure goals

- How do you want to see the land and water at the end of closure
- It's about the vision for the future
  - the closed site can be safely used in ways that fit with surrounding land use
  - **future land use is defined with input from communities**
  - example: reclaimed area support traditional land use such as hunting, travel, or cultural activities

## Minimum goal:

*“To return the mine site and affected areas to viable and, wherever practicable, self-sustaining ecosystems that are compatible with a healthy environment and with human activities.”*



# Defining closure goals

Projects can add to the minimum goal:

1. Land and water that is physically and chemically stable and safe for people, wildlife and aquatic life.
2. Land and water that allows for traditional use.
3. Final landscape guided by traditional knowledge.
4. Final landscape guided by pre-development conditions.
5. Final landscape that is neutral to wildlife – being neither a significant attractant nor significant deterrent relative to pre-development conditions.
6. Maximize northern business opportunities during operations and closure.

# Establishing closure principles

- basic rules that guide how a development like the Norman Wells oilfield should be closed and reclaimed
- four closure principles that need to be considered in closure planning:
  - **Physical Stability**
  - **Chemical Stability**
  - **Future Use**
  - **No Long-term Active Care**

# Creating closure objectives

- closure objectives are clear statements that describe what Imperial needs to achieve when it closes the Norman Wells oilfield to meet the overall closure goal and principles
- Imperial will propose site-wide and component-specific closure objectives
- as required, the Review Board will facilitate workshops to refine the closure objectives

# Closure planning – waste rock example

Closure Goal

Closure Principles

Closure Objective

Closure Options

Selected Closure Activity

Project areas are physically stable and safe for use by people and wildlife.

Landscape (shape and appearance) that match aesthetics of the surrounding natural area.

Backfill into Pits

Surface runoff and seepage water quality that is safe for humans and wildlife

Areas in and around the site that are undisturbed during operation of the Mine should remain undisturbed during and after closure.

Cover with clean rock

Surface runoff and seepage water quality that will not cause adverse effects on aquatic life or water uses surrounding water bodies.

Safe passage and use for caribou and other wildlife.

Cover with Till

ENGAGEMENT

Cover with till and clean rock within footprint and reslope pile to resemble an esker

# Defining the closure plan (Phase 1)

- a **series of workshops** to support Imperial's closure work
  - facilitated by the Review Board
- **Imperial gathers additional** site and baseline information
  - environmental site assessments
  - site inventory
- **information requests** to Imperial, federal and territorial governments, Indigenous governments

# Defining the closure plan (Phase 1)

- **first series of workshops**
  - **closure goals and vision workshop**
  - **closure objectives workshop**
  - **closure options (alternatives) workshop**
- **outcome of the first series of workshops:**
  - **shared understanding of process, scope, closure goal, and issue list**
  - **initial alternatives assessment**



# Phase 2 – environmental assessment of Imperial’s closure plan

- ‘standard’ environmental assessment of Imperial’s closure plan
  - assess the environmental, social, and cultural impacts of Imperial’s closure plan



# Next steps

- summary reports from community meetings
- additional workshops:
  - closure vision and goals
  - closure objectives
- Imperial will continue to engage with communities to gather information and input on closure planning

