



Environmental Assessment Closure and Reclamation – Imperial’s Norman Wells Facilities

Meeting with the K’áhshó Got’ıne Committee and Rádeyılıkóé (Fort Good Hope) Leadership

This report provides a summary of a meeting between staff of the Mackenzie Valley Environmental Impact Review Board (Review Board), the K’áhshó Got’ıne Committee and other members of Rádeyılıkóé (Fort Good Hope) Leadership (Figures 1 and 2). The Review





Board held this dinner meeting on April 28, 2026 in the Fort Good Hope K'asho Got'ine Charter Community Office and the Review Board's office to share information about the proposed environmental assessment process for the closure and reclamation of Imperial Oil Resources Ltd Norman Wells Facilities (Imperial) and introduce parties to the [Guidelines for the Closure and Reclamation of Advanced Mineral Exploration and Mine Sites in the Northwest Territories \(Closure Guidelines\)](#) that will be used to help guide the environmental assessment and Imperial in updating its draft Closure Plan. A full list attendees can be found in Appendix A.



Figure 1: Review Board meeting with the K'áhshó Got'ine Committee and other members of Fort Good Hope Leadership in Fort Good Hope, April 28, 2026



Figure 2: Review Board meeting with the K'áhshó Got'įnę Committee and other members of Fort Good Hope Leadership in Yellowknife, April 28, 2026.

The Review Board made a presentation (Appendix B) explaining how closure planning works. They talked about the main parts of closure planning - such as goals, principles, objectives and actions - and explained the environmental assessment process. There were some follow-up questions about the two phases (the closure planning phase where Imperial uses input from parties to develop the closure plan, and the assessment phase where the closure plan is assessed for potential impacts). Participants wanted information that would allow them to participate fully and effectively.

People at the meeting wanted to better understand how all the closure planning steps fit together. They asked how discussions about long-term goals and visions for Norman Wells would turn into clear actions to close the site. Some asked how Imperial's commitments - and any requirements from the environmental assessment - would be enforced. Community leaders also wanted to know how people would be sure the site was safe after it is closed.

Participants asked questions about the Review Board's process and role, specifically on how the Review Board would make sure Imperial engages with communities while developing the closure plan. The Review Board explained that closure planning is part of this environmental assessment process. The Review Board also described how this process is open to the public, including community participation, and involves meetings where communities, other parties, and Imperial can talk together about plans to close the Norman Wells facilities.

The Review Board also heard concerns that the current funding will not be enough to meaningfully participate in the process. Because the environmental assessment is expected to take multiple years and involve many meetings, the K'áhshó Got'įnę Committee said the



Northern Participant Funding Program may not provide enough funding. The Review Board said there may be additional funding available through Crown-Indigenous Relations and Northern Affairs Canada during the environmental assessment.

The discussion ended with questions about what would happen to the artificial islands, contaminated soils, and buried waste, including barrels of oil under the airstrip. The Review Board reminded everyone that the first step is to set clear goals for closing the oilfield and that all cleanup and closure actions must be able to meet those goals.

Appendix A – List of attendees

Review Board:

- Malorey Nirlungayuk
- Melissa Pink
- Mark Cliffe-Phillips
- Alan Erlich

K'áhshó Got'íne Committee and Fort Good Hope Leadership:

- Joesph Tobac (President, Yamoga Land Corporation)
- Shawn Grandjambe (Chief, Fort Good Hope Charter Community)
- Daniel T'seleie (advisor to the K'áhshó Got'íne Committee)
- Bob Overvold (consultant to the K'áhshó Got'íne)
- Darcy Edgi (Sub-Chief, Fort Good Hope Charter Community and President, K'áhshó Got'íne Foundation)
- Aurora McNeely (President, Fort Good Hope Metis)
- Alexa Scully (Director of Operations, K'áhshó Got'íne Committee)
- Ceilidh Stubbs (legal counsel, K'áhshó Got'íne Committee)
- Emily Ham (Hutchinson Environmental, for the K'áhshó Got'íne Committee)
- Roger Boniface (Elder and councillor, Fort Good Hope Charter Community)
- Lucy Jackson (Elder and councillor, Fort Good Hope Charter Community)
- Angela Grandjambe (councillor, Fort Good Hope Charter Community)
- Tom Kakfwi (Fort Good Hope Renewable Resource Council)
- Norman Pierrot (councillor, Fort Good Hope Charter Community)
- Daniel Masazumi (K'áhshó Got'íne Foundation)
- Benjamin Roy (Sahtu Land and Water Board)

- Clayton Lafferty (Fort Good Hope Metis)
- Bianca Romagnoli (acting SAO Fort Good Hope Charter Community)
- Harvy Pierrot
- SAO, Fort Good Hope



Appendix B - Review Board's presentation

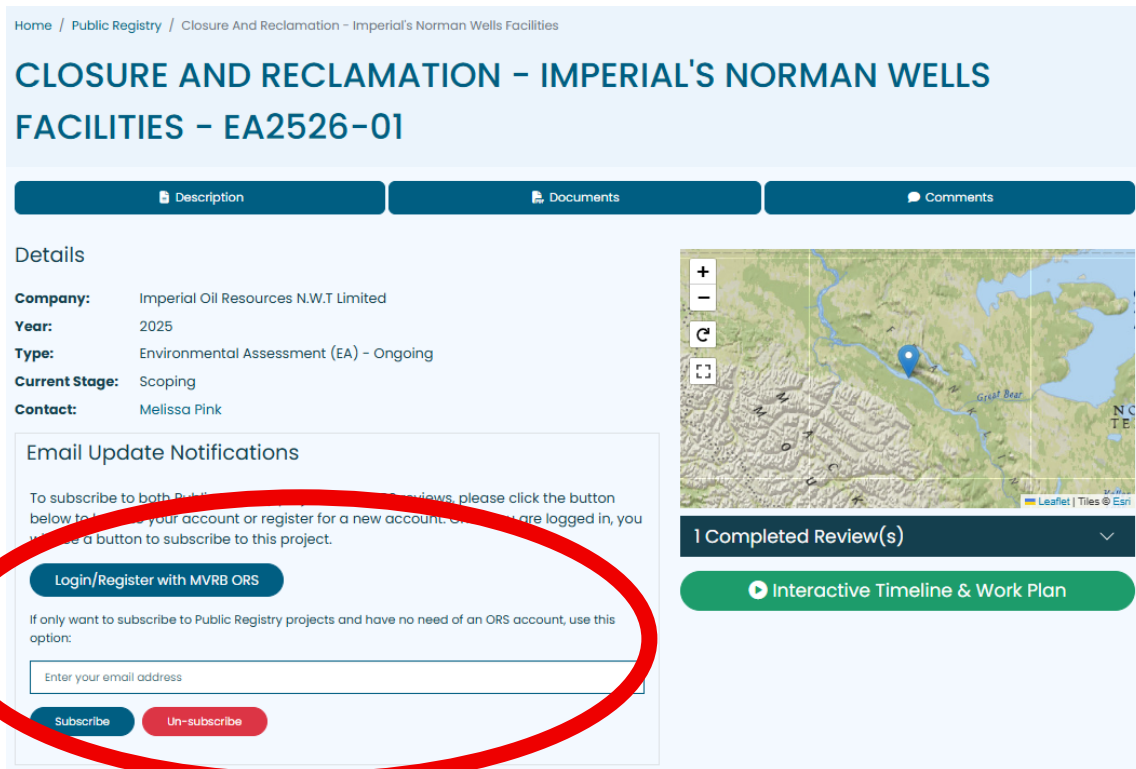




Public Registry (<https://new.reviewboard.ca/en/registry/ea2526-01>)

If you want to get updates about the Closure and Reclamation of Imperial’s Norman Wells Facilities (EA2526-01), you can subscribe on the Review Board’s website. You will get an email notification every time a new document is added to this Public Registry for this EA.

- Click the link above
- then enter your email and click the blue “**subscribe**” button. See the below picture for reference



Online Review System (ORS) (<https://new.onlinereviewssystem.ca/>)

The ORS lets anyone take part in the public review process. It is used by the co-management system to collect feedback on documents and to submit or respond to Information Requests.

To get updates or invitations to participate in the Closure and Reclamation – Imperial’s Norman Wells Facilities (EA2526-01) reviews, you need to **create an ORS account and request to be added to or deleted off the distribution list.**

- Click the link above
- follow the steps in the ORS user manual to create an account. See the below picture for reference





Welcome to the ORS

Welcome to the Online Review System which provides everyone an opportunity to participate in the Boards' public review process.

Co-management is the foundation of the northern regulatory system so it's important that parties take the time to contribute their knowledge, perspectives, and expertise to the decision-making process.

[User Manual](#)

Each review on the ORS has a distribution list – **be sure to sign up to be on the distribution list for the Imperial Closure environmental assessment.** To view the latest distribution list for the Closure and Reclamation – Imperial's Norman Wells Facilities (EA2526-01), complete the following:

- follow this link (<https://new.onlinereviewssystem.ca/reviews/board/mveirb/>)
- under "Project", click on "Closure and Reclamation of Imperial's Norman Wells Facilities"

If you have any questions, need more information, or to help update your organization's contact on the distribution list, please contact:

- Melissa Pink, Senior Environmental Assessment Advisor at mpink@reviewboard.ca, 867-766-7052 or,
- Simon Toogood, Senior Environmental Assessment Advisor at stoogood@reviewboard.ca, 867-766-7053



Scan the QR code to access the **Review Board's public registry**



Scan the QR code to access the **Online Review System**



If you have any questions, need more information, or to help update your organization's contact on the distribution list, please contact:

- Melissa Pink, Senior Environmental Assessment Advisor at mpink@reviewboard.ca, 867-766-7052 or,
- Simon Toogood, Senior Environmental Assessment Advisor at stogood@reviewboard.ca, 867-766-7053

What is on this USB?

This USB contains materials related to Imperial Oil Resources N.W.T Limited environmental assessment (EA2526-01) and environmental assessments in general. Below is a list of included PDFs and videos, with some items linking to the Review Board's website or YouTube.

INTRODUCTION

- Short videos that explain who we are and what we do (in Dene Kədá and English):
 - [What is an Environmental Assessment](#) (Dene Kədá)
 - [What is an Environmental Assessment](#) (English)
 - [What is the Mackenzie Valley Review Board](#) (Dene Kədá)
 - [What is the Mackenzie Valley Review Board](#) (English)

IMPERIAL OIL RESOURCES N.W.T LIMITED Environmental Assessment (EA2526-01)

- Review Board documents for this environmental assessment
 - QR codes for the Public Registry and ORS
 - How to subscribe to the Public Registry and ORS
 - Presentation on NW Closure - Phase 1
- Essential Public Registry documents:
 - Letter to the Review Board requesting an EA on closure ([PR1](#))
 - Norman Wells Interim Closure and Reclamation Plan - 2016 ([PR2](#))
 - Norman Wells Interim Closure and Reclamation Plan – 2022 Addendum ([PR3](#))
 - Reasons for Decision to order an EA ([PR6](#))
 - EA Process and Next Steps ([PR47](#))

EXTRA INFORMATION from the Review Board

- Environmental Assessment Process booklets
 - [Booklet 1 – Overview of Environmental Impact Assessment \(2022\)](#)
 - [Booklet 2 – Project Planning \(2022\)](#)
 - [Booklet 3 – Preliminary Screening \(2022\)](#)
 - [Booklet 4 – Environmental Assessment \(2022\)](#)
 - [Booklet 5 – Follow-up \(2022\)](#)
 - [Booklet 6 – Participation \(2022\)](#)



- [Meeting Template](#) - For meetings between a Party and the Developer. Submitted forms are posted to the Public Registry and may be used as evidence in an Environmental Assessment.
- Guidelines
 - [Guidelines for incorporating Traditional Knowledge in Environmental Impact Assessment](#)
 - [Environmental Assessment Guidelines Overview](#)
 - [Socio-Economic Impact Assessment Guidelines](#)
- A series of short videos outlining the Review Board's Environmental Assessment process. You can watch them at your convenience throughout the different stages of the process:
 - [Environmental Assessment startup and scoping](#)
 - [Developer's Assessment Report](#)
 - [Information Requests](#)
 - [Technical sessions](#)
 - [Community Sessions](#)
 - [Interventions](#)
 - [Hearings](#)
 - [Decision](#)
 - [How you can participate in the Environmental Assessment process](#)
 - Engagement Strategy 2023
 - Engagement strategy and educational tools

For questions about the Environmental Assessment Process or Imperial Oil Resources N.W.T. Limited Environmental Assessment (EA2526-01), please contact Melissa Pink at mpink@reviewboard.ca, 867-766-7052, or Simon Toogood at stoogood@reviewboard.ca, 867-766-7053.



Closure of Imperial's Norman Wells Facilities - Environmental Assessment Process Discussion

Meeting, Fort Good Hope
April 28, 2026



NWT Archives/©Canada, Department of Interior/G-1979-001-0230

Meeting overview

- **Why we are here and why this environmental assessment matters**
- **Walk through the environmental assessment process**
 - Phase 1: Development of the Closure Plan
 - Phase 2: Assessing the Closure Plan
- **Talk about the language of closure**



Why we are here

Build a shared understanding of the closure planning process

- the closure planning process decides what will happen to land, water, and remaining infrastructure when operations end

We'll clarify the step-by-step process and key terms, so everyone can participate confidently



Understanding land administration, jurisdiction, and regulation

- Many governments have roles and responsibilities within the Norman Wells Proven Area
 - Indigenous
 - Municipal
 - Territorial
 - Federal
- Regulators include Sahtu Land and Water Board and Canadian Energy Regulator
- Information requests and workshops to help everyone understand



Developing the closure plan (Phase 1) - your role in closure

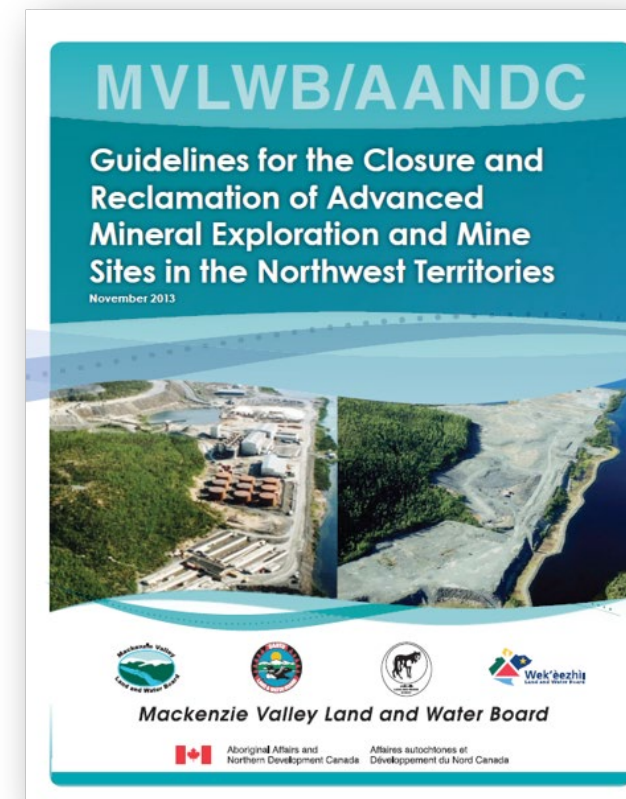


- community members, Elders, and land users bring traditional and local knowledge
- Indigenous Governments help bring community input
- **your input** helps define what must be protected or restored, what “safe” means in real terms, and what future land use should look like
- participate through workshops, plain-language reviews, stories, observations, and questions—then stay involved in monitoring and follow-up



Closure planning in this EA

- define what successful closure looks like
- set clear closure goals and measurable criteria to track progress
- use community knowledge and technical expertise to shape closure objectives
- Imperial to develop an updated closure plan that is practical, respectful of culture, and grounded in local knowledge
- assess the updated closure plan



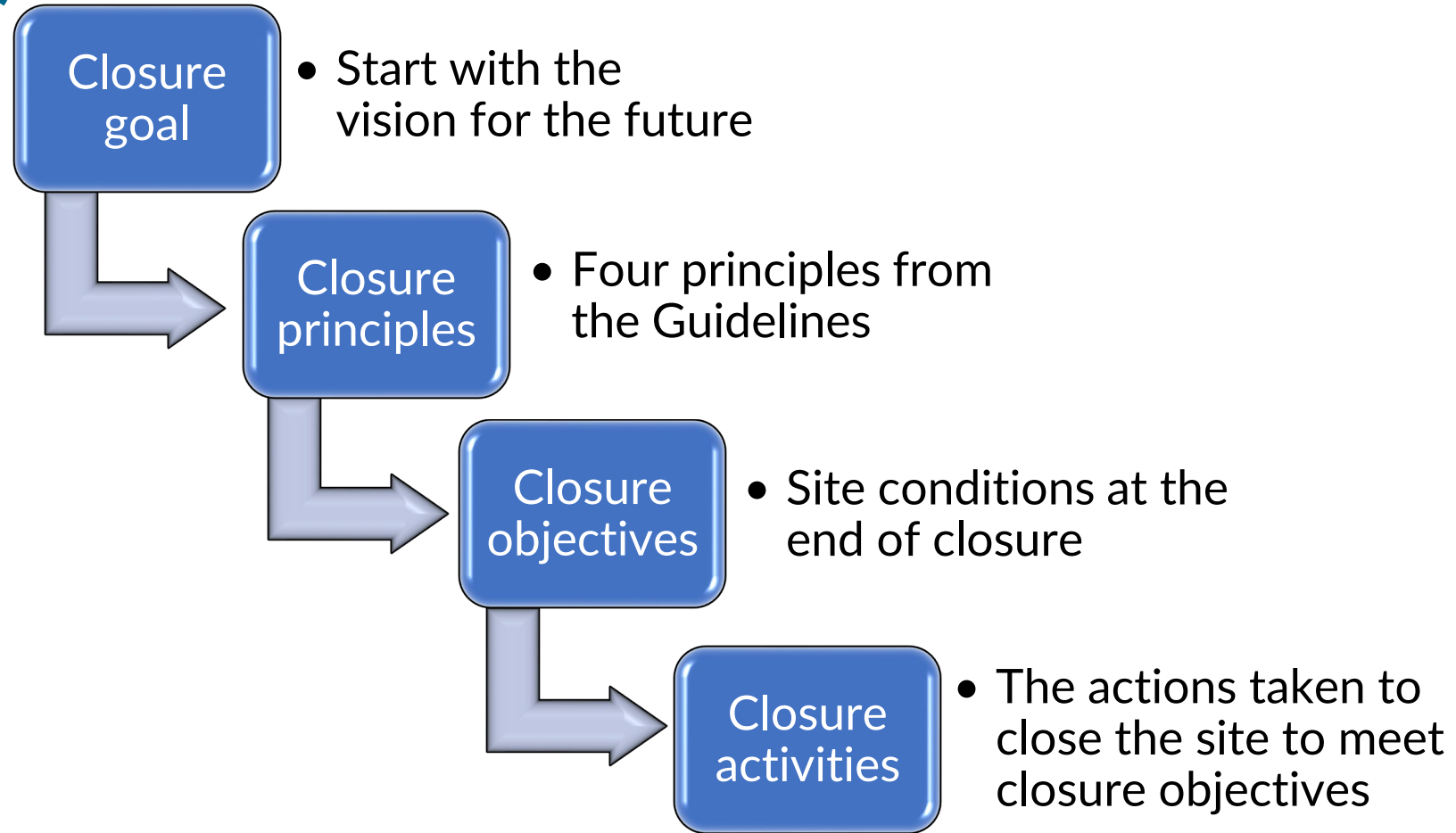
What is in a closure plan?

Detailed description of:

- the condition of the site now
- the **vision for the site in the future**
- the **work required** to clean the site to achieve the vision
- how the work will be **carried out**
- how the work be **monitored**
- how we will know the work has been **successful**



Defining the closure plan (Phase 1)



Defining closure goals

- How do you want to see the land and water at the end of closure
- It's about the vision for the future
 - the closed site can be safely used in ways that fit with surrounding land use
 - **future land use is defined with input from communities**
 - example: reclaimed area support traditional land use such as hunting, travel, or cultural activities

Minimum goal:

“To return the mine site and affected areas to viable and, wherever practicable, self-sustaining ecosystems that are compatible with a healthy environment and with human activities.”

Defining closure goals

Projects can add to the minimum goal:

1. Land and water that is physically and chemically stable and safe for people, wildlife and aquatic life.
2. Land and water that allows for traditional use.
3. Final landscape guided by Traditional Knowledge.
4. Final landscape guided by pre-development conditions.
5. Final landscape that is neutral to wildlife – being neither a significant attractant nor significant deterrent relative to pre-development conditions.
6. Maximize northern business opportunities during operations and closure.

Establishing closure principles

- basic rules that guide how a development like the Norman Wells oilfield should be closed and reclaimed
- four closure principles that need to be considered in closure planning:
 - **Physical Stability**
 - **Chemical Stability**
 - **Future Use**
 - **No Long-term Active Care**



Creating closure objectives

- closure objectives are clear statements that describe what Imperial needs to achieve when it closes the Norman Wells oilfield to meet the overall closure goal and principles
- Imperial will propose site-wide and component-specific closure objectives
- as required, the Review Board will facilitate workshops to refine the closure objectives

Closure planning – waste rock example

Closure Goal

Closure Principles

Closure Objective

Closure Options

Selected Closure Activity

Project areas are physically stable and safe for use by people and wildlife.

Landscape (shape and appearance) that match aesthetics of the surrounding natural area.

Backfill into Pits

Surface runoff and seepage water quality that is safe for humans and wildlife

Areas in and around the site that are undisturbed during operation of the Mine should remain undisturbed during and after closure.

Cover with clean rock

Surface runoff and seepage water quality that will not cause adverse effects on aquatic life or water uses surrounding water bodies.

Safe passage and use for caribou and other wildlife.

Cover with Till

ENGAGEMENT

Cover with till and clean rock within footprint and reslope pile to resemble an esker

Defining the closure plan (Phase 1)

- a **series of workshops** to support Imperial's closure work
 - facilitated by the Review Board
- **Imperial gathers additional** site and baseline information
 - environmental site assessments
 - site inventory
- **information requests** to Imperial, federal and territorial governments, Indigenous governments

Phase 2 – environmental assessment of Imperial’s closure plan

- ‘standard’ environmental assessment of Imperial’s closure plan
 - assess the environmental, social, and cultural impacts of Imperial’s closure plan



Next steps

- summary reports from community meetings
- additional workshops:
 - closure vision and goals
- Imperial will continue to engage with communities to gather information and input on closure planning

