



May 26, 2026

EA2526-01

Environmental Assessment Closure and Reclamation – Imperial’s Norman Wells Facilities

Community Open House in Rádeyǫ́lkóé (Fort Good Hope)



This report summarizes the discussion from the Mackenzie Valley Environmental Impact Review Board (Review Board)'s community open house in Rádeyǫ̀łkóé (Fort Good Hope) on April 29, 2026. The Review Board held this open house (see Appendix A for the poster and hand out materials) to help parties and community members understand the environmental assessment process for the closure and reclamation of Imperial Oil Resources Ltd. Norman Wells Facilities (Imperial) and introduce parties to the language of closure planning from the [Guidelines for the Closure and Reclamation of Advanced Mineral Exploration and Mine Sites in the Northwest Territories \(Closure Guidelines\)](#).



Figure 1 Community members at the community hall.

The Review Board hosted an open house in Rádeyǫ̀łkóé (Fort Good Hope) from 2:00-7:00PM at the Community Hall. Attendees included Community members, Government of Canada, and members of the K'áhshó Got'ıné Committee (Fort Good Hope Dene Band, Yamoga Lands Corporation, Fort Good Hope Metis Nation Local #54 Land Corporation, Fort Good Hope Renewable Resources Council, K'áhshó Got'ıné Foundation), along with representatives from Imperial (see Appendix B for the attendee list).

Review Board staff delivered a presentation (Appendix C) at the start and a shorter version of the presentation after dinner. The presentation provided an overview of closure planning, key concepts of closure planning (goals, principles, objectives, and actions) and the environmental assessment process.



During and after the presentations, participants at the Open House could ask questions and speak directly to Indigenous leaderships, the Government of Canada and Imperial.



Figure 2: Members of the community

Participants asked if Imperial has plans to dig up items they have buried in various places and burn them, like they have in the past and if they will do any clean-up that includes burning off contaminated soils or water. The Review Board confirmed that there will be no burning of items and Imperial is completing environmental site assessments to locate all old places they have occupied to be a part of the closure plan.

The Review Board used a mine closure example to describe how closure options can be refined based on community participation which confused some participants. People said their concerns are about artificial islands, cancer rates, and contaminated drinking water and not closing mines. They want the water to be clean for children to drink, swim and play in. They suggested the Review Board stay away from mine examples.

Some people expressed concerns about closed-door meetings (described by the participant as meetings with leadership only). They were concerned that there could be information shared at the meeting that was not communicated back to the broader community. They also said it's important to include everyone, not just leadership, in all meetings. The Review Board noted that after any meeting with leadership about the project summaries are posted to the Public Registry. The environmental assessment process is open and inclusive to all participants.

Another participant asked what is going to happen with the artificial islands. The Review Board responded that nothing has been finalized yet, but if we start to think about the goals and vision for Norman Wells and the surrounding area, it will help decide what happens to the islands.

Participants asked questions regarding the timeline for closure and when the closure goal was decided. The Review Board noted the Interim Closure and Reclamation Plan (ICRP) was submitted in 2016 and the addendum was submitted in 2022. The Review Board stated these documents are the starting point, that they still require community input before Imperial drafts the final plan. The final plans need to be reflective of community wants and needs.

A participant recommended K'áhshó Got'Inę being a part of the monitoring. The Review Board noted that Indigenous guardianship have been required as part of environmental assessment measures before and there are opportunities Indigenous guardianship and monitoring to be an outcome of this environmental assessment. This includes helping to determine where water quality monitoring and fish sampling should occur.

A participant asked about receiving and submitting information in Indigenous languages to ensure that those who do not use technology or who can only speak in their language are able to participate in the environmental assessment. The Review Board responded that they would accept comments through audio submission in Indigenous languages and that key documents can be translated. Additionally, the Review Board has some videos on the environmental assessment process itself that have been translated.

The Review Board will be following up with one participant who asked a large number of questions on topics ranging from training and employment opportunities to a potential human health impact assessment for communities along the Mackenzie River.



Figure 3: Members of the community at the open house in Fort Good Hope

Appendix A – Poster and hand out materials





Review Board Open House

Rádeyíłıkóé (Fort Good Hope)

A discussion on the
Environmental Assessment Process
of Imperial Oil's Closure

Wednesday, April 29, 2026

K'áhshó Got'ıne Community Hall

2:00 - 7:00 PM

Snacks and dinner provided



For more information please contact:

Melissa Pink (867) 766-7052 | mpink@reviewboard.ca or

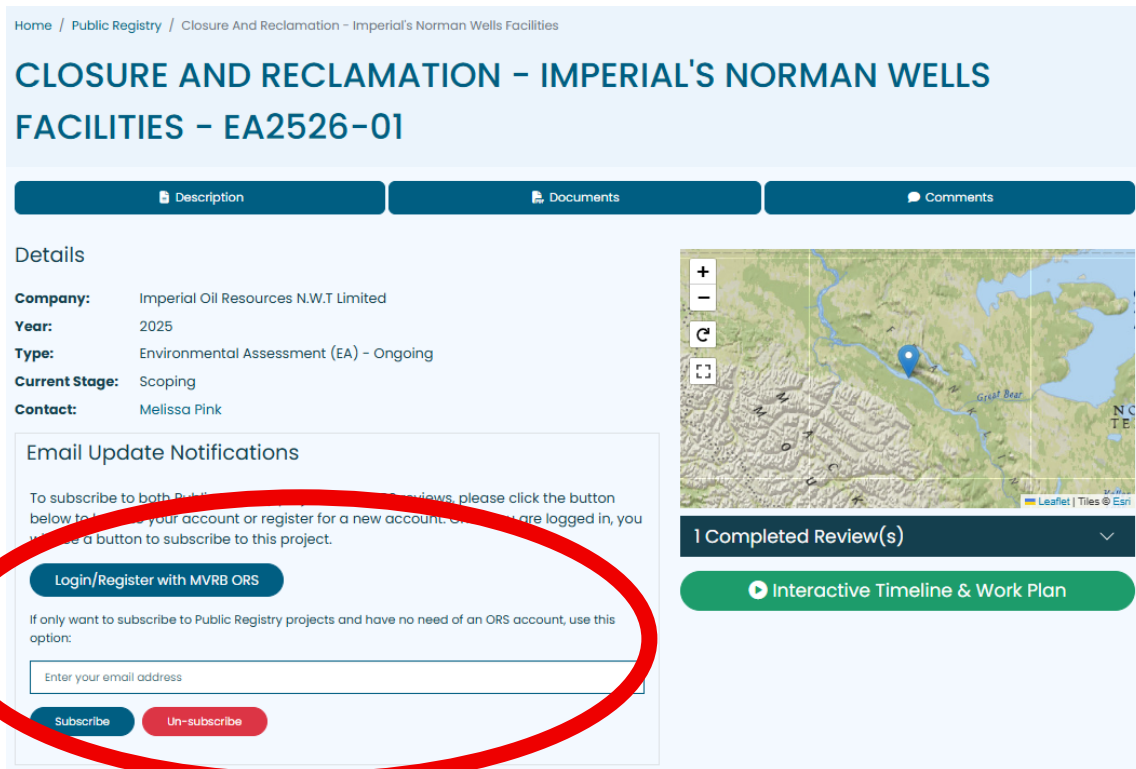
Donna Schear (867) 445-8096 | dschear@reviewboard.ca



Public Registry (<https://new.reviewboard.ca/en/registry/ea2526-01>)

If you want to get updates about the Closure and Reclamation of Imperial’s Norman Wells Facilities (EA2526-01), you can subscribe on the Review Board’s website. You will get an email notification every time a new document is added to this Public Registry for this EA.

- Click the link above
- then enter your email and click the blue “**subscribe**” button. See the below picture for reference



Online Review System (ORS) (<https://new.onlinereviewsystem.ca/>)

The ORS lets anyone take part in the public review process. It is used by the co-management system to collect feedback on documents and to submit or respond to Information Requests.

To get updates or invitations to participate in the Closure and Reclamation – Imperial’s Norman Wells Facilities (EA2526-01) reviews, you need to **create an ORS account and request to be added to or deleted off the distribution list.**

- Click the link above
- follow the steps in the ORS user manual to create an account. See the below picture for reference



Welcome to the ORS

Welcome to the Online Review System which provides everyone an opportunity to participate in the Boards' public review process.

Co-management is the foundation of the northern regulatory system so it's important that parties take the time to contribute their knowledge, perspectives, and expertise to the decision-making process.

[User Manual](#)

Each review on the ORS has a distribution list – **be sure to sign up to be on the distribution list for the Imperial Closure environmental assessment.** To view the latest distribution list for the Closure and Reclamation – Imperial's Norman Wells Facilities (EA2526-01), complete the following:

- follow this link (<https://new.onlinereviewssystem.ca/reviews/board/mveirb/>)
- under “Project”, click on “Closure and Reclamation of Imperial's Norman Wells Facilities”

If you have any questions, need more information, or to help update your organization's contact on the distribution list, please contact:

- Melissa Pink, Senior Environmental Assessment Advisor at mpink@reviewboard.ca, 867-766-7052 or,
- Simon Toogood, Senior Environmental Assessment Advisor at stoogood@reviewboard.ca, 867-766-7053



Scan the QR code to access the **Review Board's public registry**



Scan the QR code to access the **Online Review System**



If you have any questions, need more information, or to help update your organization's contact on the distribution list, please contact:

- Melissa Pink, Senior Environmental Assessment Advisor at mpink@reviewboard.ca, 867-766-7052 or,
- Simon Toogood, Senior Environmental Assessment Advisor at stogood@reviewboard.ca, 867-766-7053

What is on this USB?

This USB contains materials related to Imperial Oil Resources N.W.T Limited environmental assessment (EA2526-01) and environmental assessments in general. Below is a list of included PDFs and videos, with some items linking to the Review Board's website or YouTube.

INTRODUCTION

- Short videos that explain who we are and what we do (in Dene Kədá and English):
 - [What is an Environmental Assessment](#) (Dene Kədá)
 - [What is an Environmental Assessment](#) (English)
 - [What is the Mackenzie Valley Review Board](#) (Dene Kədá)
 - [What is the Mackenzie Valley Review Board](#) (English)

IMPERIAL OIL RESOURCES N.W.T LIMITED Environmental Assessment (EA2526-01)

- Review Board documents for this environmental assessment
 - QR codes for the Public Registry and ORS
 - How to subscribe to the Public Registry and ORS
 - Presentation on NW Closure - Phase 1
- Essential Public Registry documents:
 - Letter to the Review Board requesting an EA on closure ([PR1](#))
 - Norman Wells Interim Closure and Reclamation Plan - 2016 ([PR2](#))
 - Norman Wells Interim Closure and Reclamation Plan – 2022 Addendum ([PR3](#))
 - Reasons for Decision to order an EA ([PR6](#))
 - EA Process and Next Steps ([PR47](#))

EXTRA INFORMATION from the Review Board

- Environmental Assessment Process booklets
 - [Booklet 1 – Overview of Environmental Impact Assessment \(2022\)](#)
 - [Booklet 2 – Project Planning \(2022\)](#)
 - [Booklet 3 – Preliminary Screening \(2022\)](#)
 - [Booklet 4 – Environmental Assessment \(2022\)](#)
 - [Booklet 5 – Follow-up \(2022\)](#)
 - [Booklet 6 – Participation \(2022\)](#)



- [Meeting Template](#) - For meetings between a Party and the Developer. Submitted forms are posted to the Public Registry and may be used as evidence in an Environmental Assessment.
- Guidelines
 - [Guidelines for incorporating Traditional Knowledge in Environmental Impact Assessment](#)
 - [Environmental Assessment Guidelines Overview](#)
 - [Socio-Economic Impact Assessment Guidelines](#)
- A series of short videos outlining the Review Board's Environmental Assessment process. You can watch them at your convenience throughout the different stages of the process:
 - [Environmental Assessment startup and scoping](#)
 - [Developer's Assessment Report](#)
 - [Information Requests](#)
 - [Technical sessions](#)
 - [Community Sessions](#)
 - [Interventions](#)
 - [Hearings](#)
 - [Decision](#)
 - [How you can participate in the Environmental Assessment process](#)
 - Engagement Strategy 2023
 - Engagement strategy and educational tools

For questions about the Environmental Assessment Process or Imperial Oil Resources N.W.T. Limited Environmental Assessment (EA2526-01), please contact Melissa Pink at mpink@reviewboard.ca, 867-766-7052, or Simon Toogood at stoogood@reviewboard.ca, 867-766-7053.



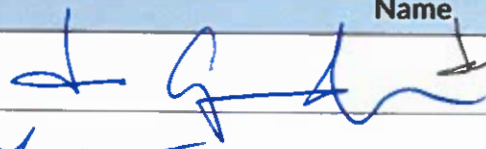
Appendix B – Participants list



Open House – Discussion on the EA Process – Imperial Oil's Closure

Location: Rádeyílkóé - K'áhshó Got'ine Community Hall Meeting Date: Wednesday April 29, 2026

Contact: Melissa Pink mpink@reviewboard.ca or Donna Schear dschear@reviewboard.ca

#	Name	Organization	Optional: Email or Phone Number
1.			
2.	Shoat		
3.	JAMES MASUZUMI		
4.	Don Kadi		
5.	 		
6.	PETER TSELEIE		
7.	Tommy KAKFI		
8.	Andrea Pivrot		
9.	Danny Masuzumi		
10.	CAROL T.		
11.	John Cotechilly		
12.	Lisa Nyul		
13.	Louisa Lafferty		
14.	Robin Tobac		

Open House – Discussion on the EA Process – Imperial Oil's Closure

Location: Rádeyǫ́kóé - K'áhshó Got'Inę Community Hall Meeting Date: Wednesday April 29, 2026

Contact: Melissa Pink mpink@reviewboard.ca or Donna Schear dschear@reviewboard.ca

	Name	Organization	Optional: Email or Phone Number
15.	Colin Perrot update from MOIRB		
16.	Chanel Shaw		
17.	Vicky O		
18.	NORMAN PIERROT	RAND	
19.	Shauna Gully		
20.	Rebecca Gully		
21.	Junior Mabely		
22.	Amber Tarea		
23.	Gordon Kelly		
24.	Michael Lafferty		
25.	Joe Ottas		
26.	Mary Gully		
27.	Patrick Masazumi		
28.	Patricia Manuel	Education	

Open House – Discussion on the EA Process – Imperial Oil’s Closure

Location: Rádeyílkóé - K’áhshó Got’ıne Community Hall Meeting Date: Wednesday April 29, 2026

Contact: Melissa Pink mpink@reviewboard.ca or Donna Schear dschear@reviewboard.ca

#	Name	Organization	Optional: Email or Phone Number
29.	Bigman MANUEL	Local	
30.	Liz Pope	Local	
31.	Jim Juh	Local	
32.	Tray Lennie		Troyhenie
33.	Dolly Pierrat	Local	
34.	W Jackson		
35.	Mary Jane		
36.	Graydon Tourea	Local	
37.	Jacob Gullb		
38.	ONLINE		
39.	- Adam Kirlin	- Ceilidh Stubbs	- Mark Cliffe-Phillips
40.	- Alexa Scully	- Daniel Tseleie	- Neil Darlow
41.	- Aurora McNeely	- Emily Ham	- Simon Toogood
42.	- Ben Fraser	- Alain Gagnon	

Appendix C - Review Board's presentation



Closure of Imperial's Norman Wells Facilities - Environmental Assessment Process Discussion

Meeting, Fort Good Hope
April 28, 2026



NWT Archives/©Canada, Department of Interior/G-1979-001-0230

Meeting overview

- **Why we are here and why this environmental assessment matters**
- **Walk through the environmental assessment process**
 - Phase 1: Development of the Closure Plan
 - Phase 2: Assessing the Closure Plan
- Talk about the **language of closure**

Why we are here

Build a shared understanding of the closure planning process

- the closure planning process decides what will happen to land, water, and remaining infrastructure when operations end

We'll clarify the step-by-step process and key terms, so everyone can participate confidently



Understanding land administration, jurisdiction, and regulation

- Many governments have roles and responsibilities within the Norman Wells Proven Area
 - Indigenous
 - Municipal
 - Territorial
 - Federal
- Regulators include Sahtu Land and Water Board and Canadian Energy Regulator
- Information requests and workshops to help everyone understand



Developing the closure plan (Phase 1) - your role in closure

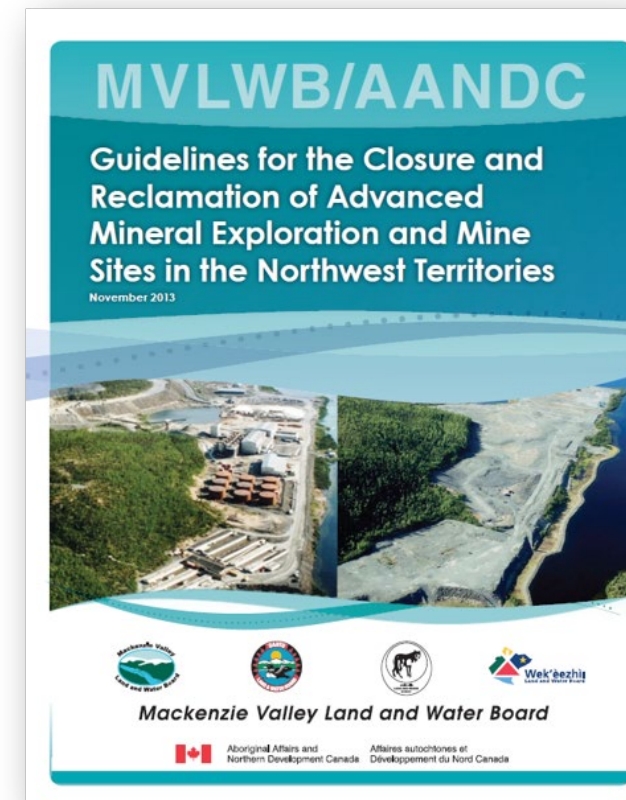


- community members, Elders, and land users bring traditional and local knowledge
- Indigenous Governments help bring community input
- **your input** helps define what must be protected or restored, what “safe” means in real terms, and what future land use should look like
- participate through workshops, plain-language reviews, stories, observations, and questions—then stay involved in monitoring and follow-up



Closure planning in this EA

- define what successful closure looks like
- set clear closure goals and measurable criteria to track progress
- use community knowledge and technical expertise to shape closure objectives
- Imperial to develop an updated closure plan that is practical, respectful of culture, and grounded in local knowledge
- assess the updated closure plan



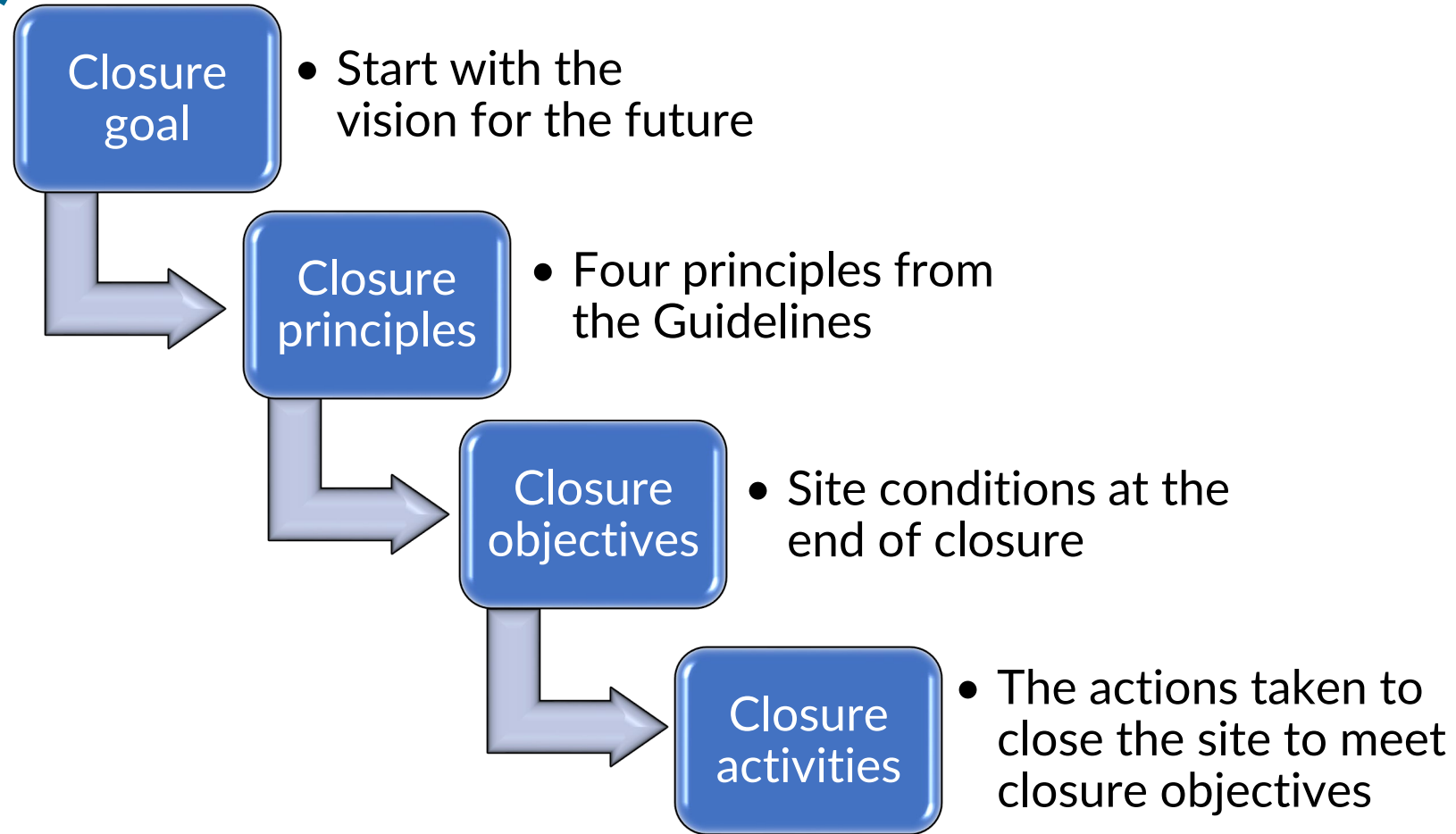
What is in a closure plan?

Detailed description of:

- the condition of the site now
- the **vision for the site in the future**
- the **work required** to clean the site to achieve the vision
- how the work will be **carried out**
- how the work be **monitored**
- how we will know the work has been **successful**



Defining the closure plan (Phase 1)



Defining closure goals

- How do you want to see the land and water at the end of closure
- It's about the vision for the future
 - the closed site can be safely used in ways that fit with surrounding land use
 - **future land use is defined with input from communities**
 - example: reclaimed area support traditional land use such as hunting, travel, or cultural activities

Minimum goal:

“To return the mine site and affected areas to viable and, wherever practicable, self-sustaining ecosystems that are compatible with a healthy environment and with human activities.”

Defining closure goals

Projects can add to the minimum goal:

1. Land and water that is physically and chemically stable and safe for people, wildlife and aquatic life.
2. Land and water that allows for traditional use.
3. Final landscape guided by Traditional Knowledge.
4. Final landscape guided by pre-development conditions.
5. Final landscape that is neutral to wildlife – being neither a significant attractant nor significant deterrent relative to pre-development conditions.
6. Maximize northern business opportunities during operations and closure.

Establishing closure principles

- basic rules that guide how a development like the Norman Wells oilfield should be closed and reclaimed
- four closure principles that need to be considered in closure planning:
 - **Physical Stability**
 - **Chemical Stability**
 - **Future Use**
 - **No Long-term Active Care**



Creating closure objectives

- closure objectives are clear statements that describe what Imperial needs to achieve when it closes the Norman Wells oilfield to meet the overall closure goal and principles
- Imperial will propose site-wide and component-specific closure objectives
- as required, the Review Board will facilitate workshops to refine the closure objectives

Closure planning – waste rock example

Closure Goal

Closure Principles

Closure Objective

Closure Options

Selected Closure Activity

Project areas are physically stable and safe for use by people and wildlife.

Landscape (shape and appearance) that match aesthetics of the surrounding natural area.

Backfill into Pits

Surface runoff and seepage water quality that is safe for humans and wildlife

Areas in and around the site that are undisturbed during operation of the Mine should remain undisturbed during and after closure.

Cover with clean rock

Surface runoff and seepage water quality that will not cause adverse effects on aquatic life or water uses surrounding water bodies.

Safe passage and use for caribou and other wildlife.

Cover with Till

ENGAGEMENT

Cover with till and clean rock within footprint and reslope pile to resemble an esker

Defining the closure plan (Phase 1)

- a **series of workshops** to support Imperial's closure work
 - facilitated by the Review Board
- **Imperial gathers additional** site and baseline information
 - environmental site assessments
 - site inventory
- **information requests** to Imperial, federal and territorial governments, Indigenous governments

Phase 2 – environmental assessment of Imperial’s closure plan

- ‘standard’ environmental assessment of Imperial’s closure plan
 - assess the environmental, social, and cultural impacts of Imperial’s closure plan



Next steps

- summary reports from community meetings
- additional workshops:
 - closure vision and goals
- Imperial will continue to engage with communities to gather information and input on closure planning

