



Road Safety and Security Sub-Working Group

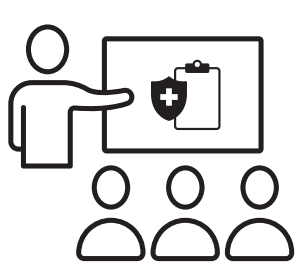


Starts 1 year prior to construction, continues 5 years once Project operational
Meets 4 times/year

GNWT funds logistics and shares Project information for planning



Safety and Security Plan for Vulnerable Community Members



Provide safety education and information

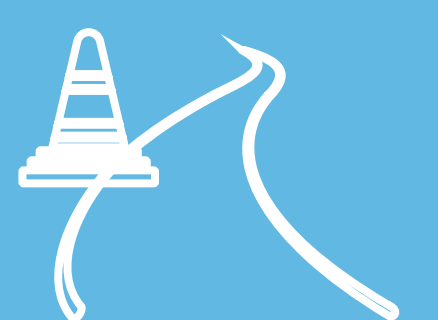


Increased access to emergency shelters / safe transportation



Consider findings from other projects

Road Safety Plan



Improved communication and awareness on the Project



RCMP enforce safety along the Project



Funding for community-based implementation coordinator





Training and Employment Sub-Working Group



Starts 1 year prior to construction, continues 5 years once Project operational
Meets 4 times/year
GNWT funds logistics and shares Project information for planning



Contractor Training and Employment Plan



Identify job/business opportunities for Project



Determine education, training and support needs



Address gaps and barriers through existing programs



GNWT will put conditions in construction contracts to prioritize and support local businesses and jobs



Socio-Economic Monitoring and Adaptive Management Sub-Working Group



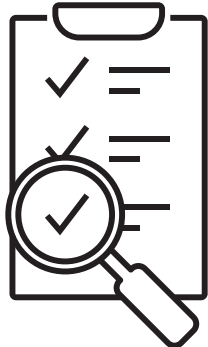

Starts 1 year prior to construction, continues 5 years once Project operational
Meets 4 times/year



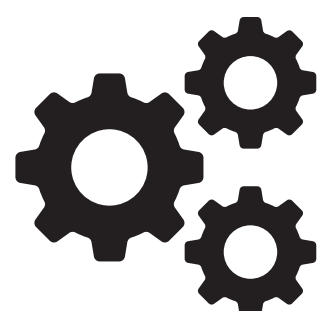
GNWT funds logistics and shares Project information for planning



Social Monitoring Plan

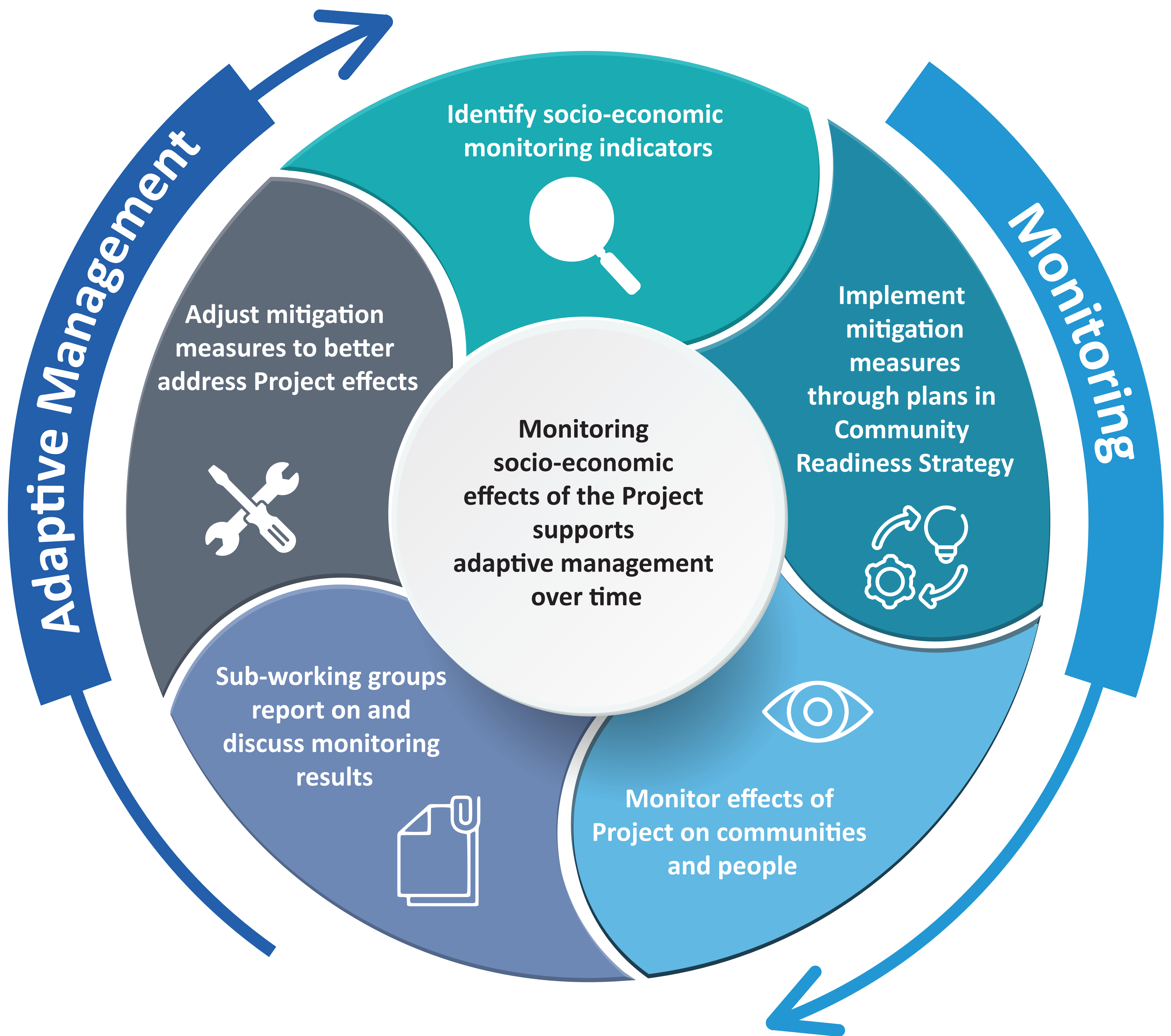
Well-Being Adaptive Management Plan

-  Track implementation of plans in Community Readiness Strategy
-  GNWT will provide funding for monitoring and reporting of results

- Identify actions at community level to mitigate negative effects 
- Actions focused community wellness, safety and services, and substance abuse and bootlegging 
- GNWT will provide funding and program support 



Socio-Economic Monitoring and Adaptive Management



Four priority areas:

1. **Community Safety** – safety and enforcement-related measures
2. **Community Wellness** – health and wellness programming and community wellness plan support
3. **Community Services** – review Project demands on health and social services and identify gaps and pressures
4. **Substance Abuse and Bootlegging** – support communities with prevention, management and treatment



We want to hear from you!

Send feedback and questions to:

Patricia Coyne
Manager, MVH Environmental Affairs
GNWT Dept. of Infrastructure
(867) 767-9082 x 31033
Patricia_Coyne@gov.nt.ca
MVH@gov.nt.ca



For more information:



www.inf.gov.nt.ca/en/MVH