



Mackenzie Valley Highway Project Proposed Socio-Economic Mitigation Measures



Welcome!



Process to Develop Mitigation Measures for Project Effects on Socio-Economic Conditions

1

Identified Potential Socio-Economic Effects from MVH



- Engaged with communities in 2022/early 2023
- Identified potential positive and negative effects of MVH
- Collected information on addressing effects

2

Develop Proposed Socio-Economic Mitigation Strategy



- Based on engagement, developed socio-economic strategy to:
 - Minimize negative effects
 - Maximize positive effects

3

Discuss Socio-Economic Mitigation Measures with Communities



- Are the mitigation measures appropriate?
- Are there other measures that should be considered?

4

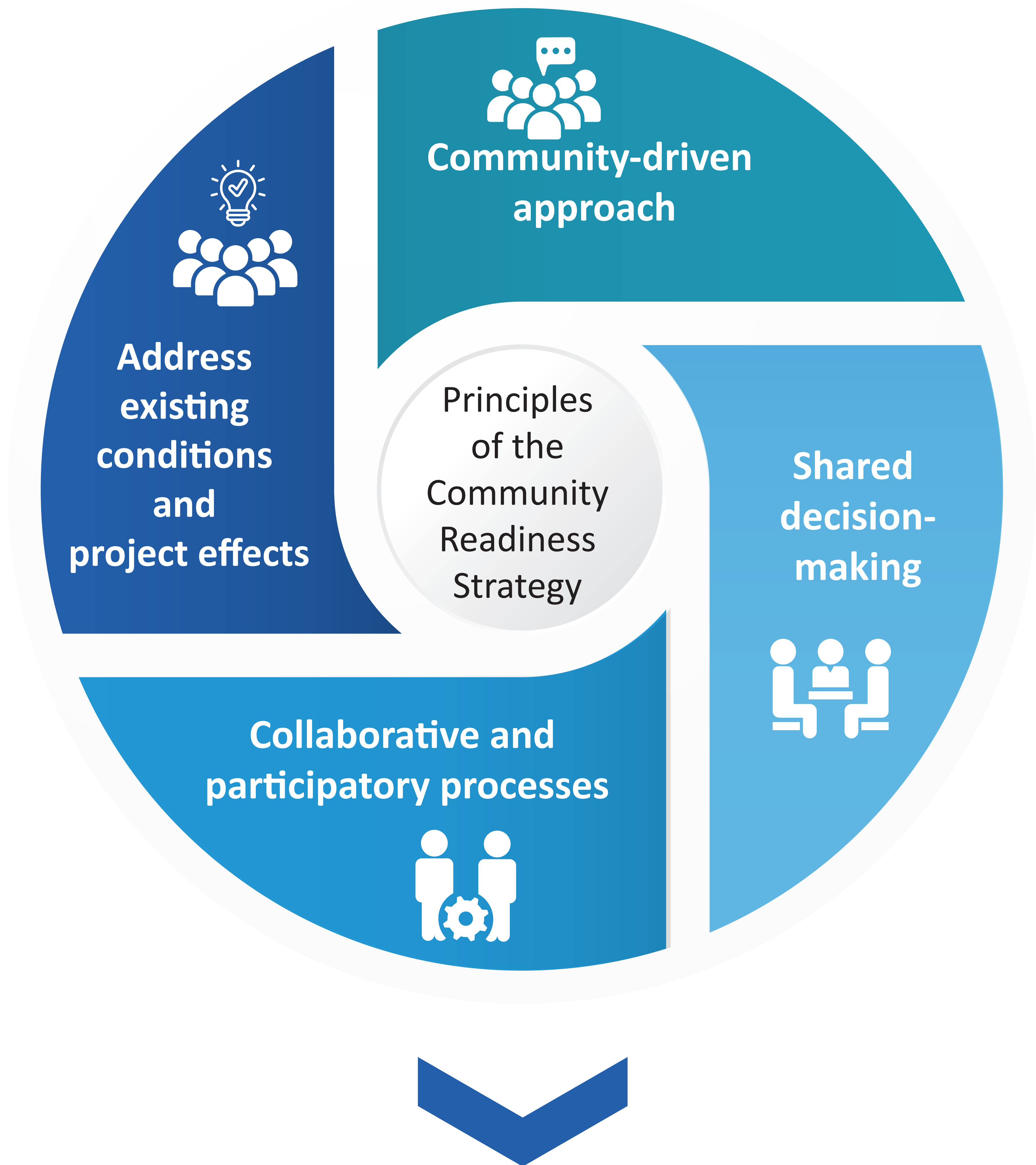
Update Socio-Economic Mitigation Measures



- Based on ongoing community engagement



Overview of MVH Community Readiness Strategy



Components of the Community Readiness Strategy:

- Strategy is made up of plans with mitigation measures focused on particular areas
- Overall strategy overseen by Mackenzie Valley Highway Corridor Working Group
- Plans are overseen and monitored by dedicated sub-working groups
- Plans and mitigation measures will be updated and adapted based on monitoring



How will the MVH Community Readiness Strategy Work?

Mackenzie Valley Highway Corridor Working Group



Oversees Community Readiness Strategy

Road Safety and Security Sub-Working Group



Safety and Security Plan for Vulnerable Community Members

Road Safety Plan

Training and Employment Sub-Working Group



Contractor Training and Employment Plan

Social Monitoring and Adaptive Management Sub-Working Group



Social Monitoring Plan

Well-Being Adaptive Management Plan



Mackenzie Valley Highway Corridor Working Group



Starts 1 year prior to construction, continues 5 years once Project operational

Meets 2 times/year

GNWT funds logistics



Issues related to project effects brought to this group



Group identifies solutions, delegates to sub-working groups