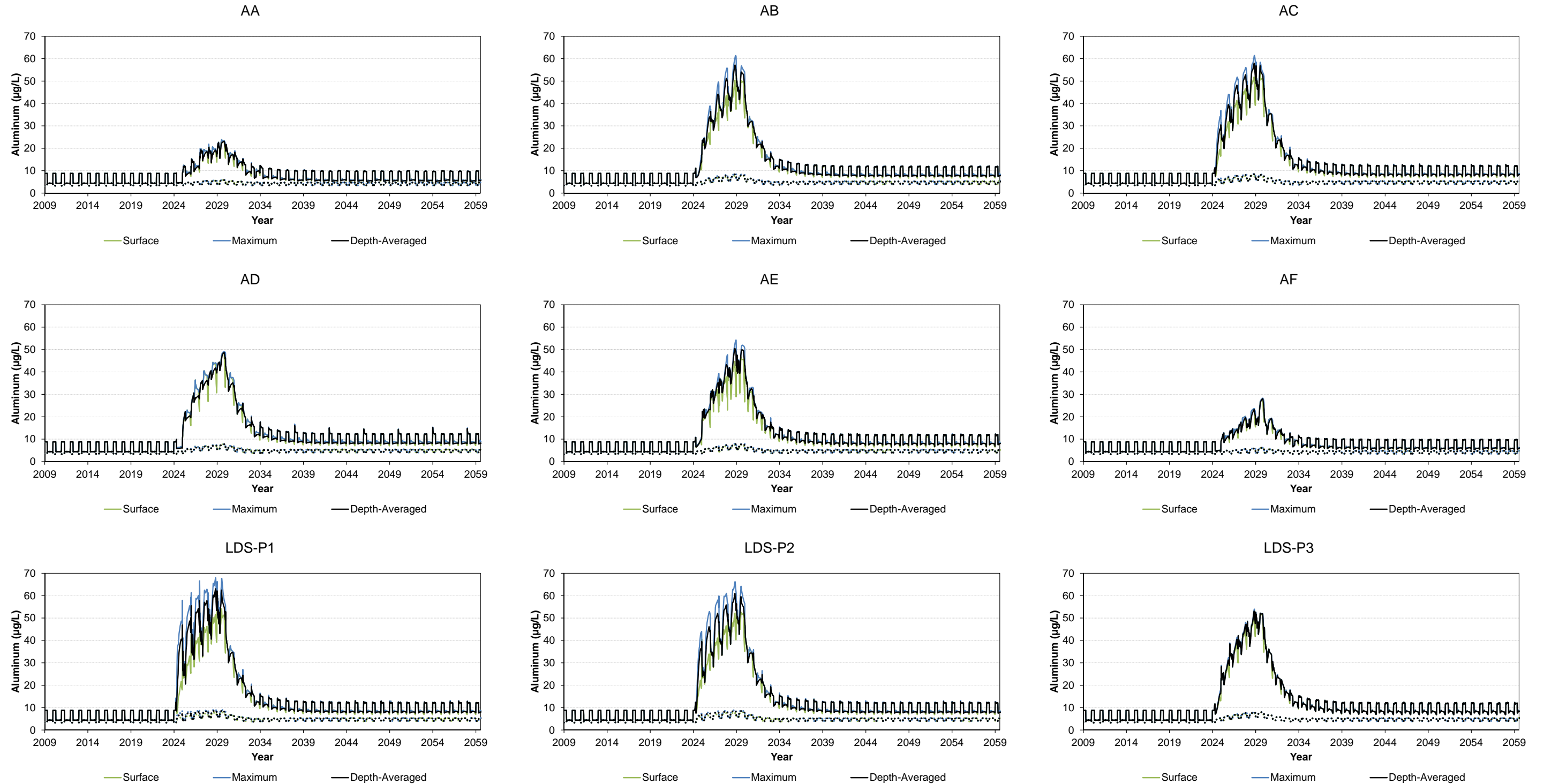
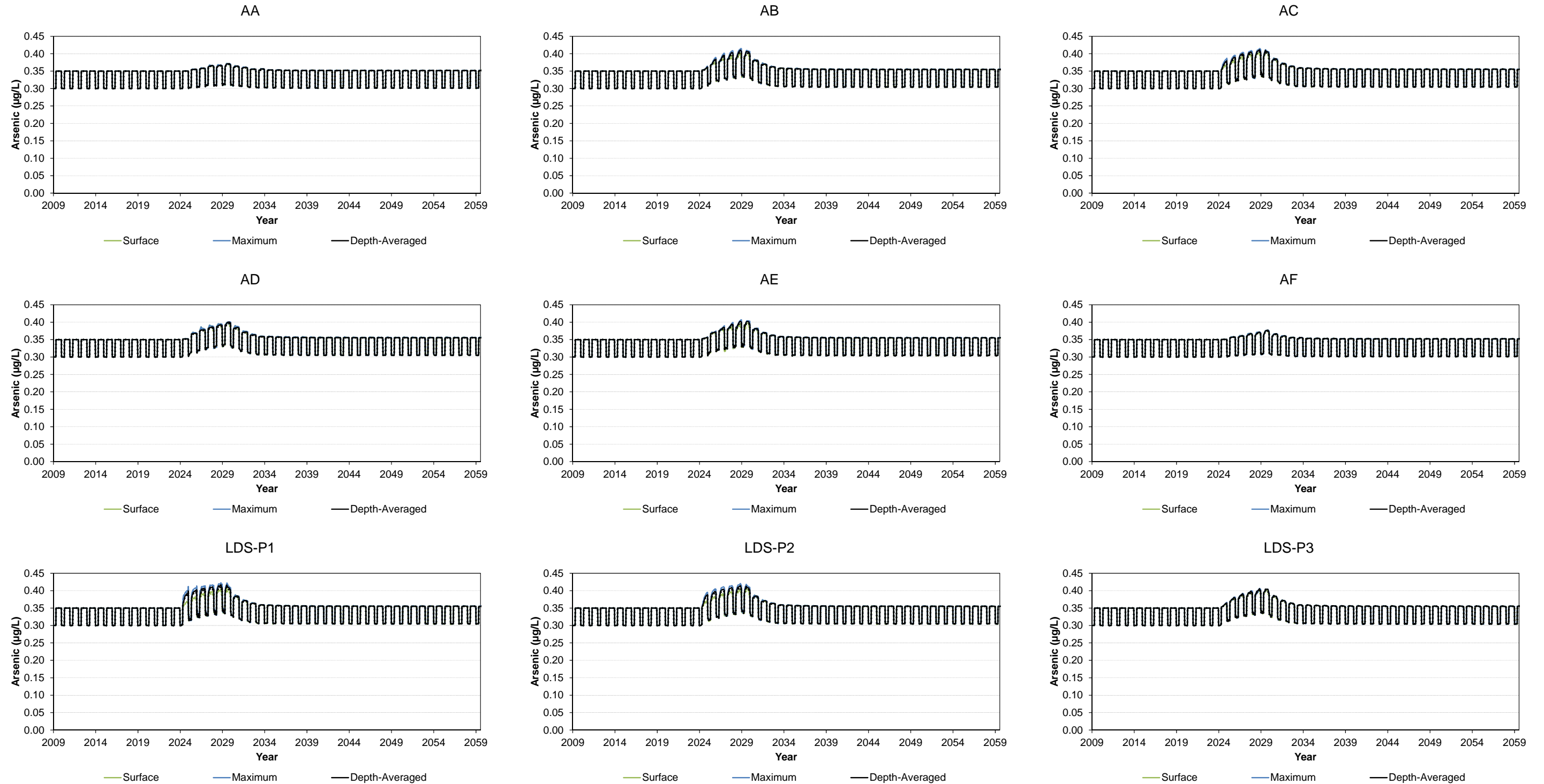


Figure 8F4-18 Predicted Total and Dissolved Aluminum Concentrations in Lac du Sauvage



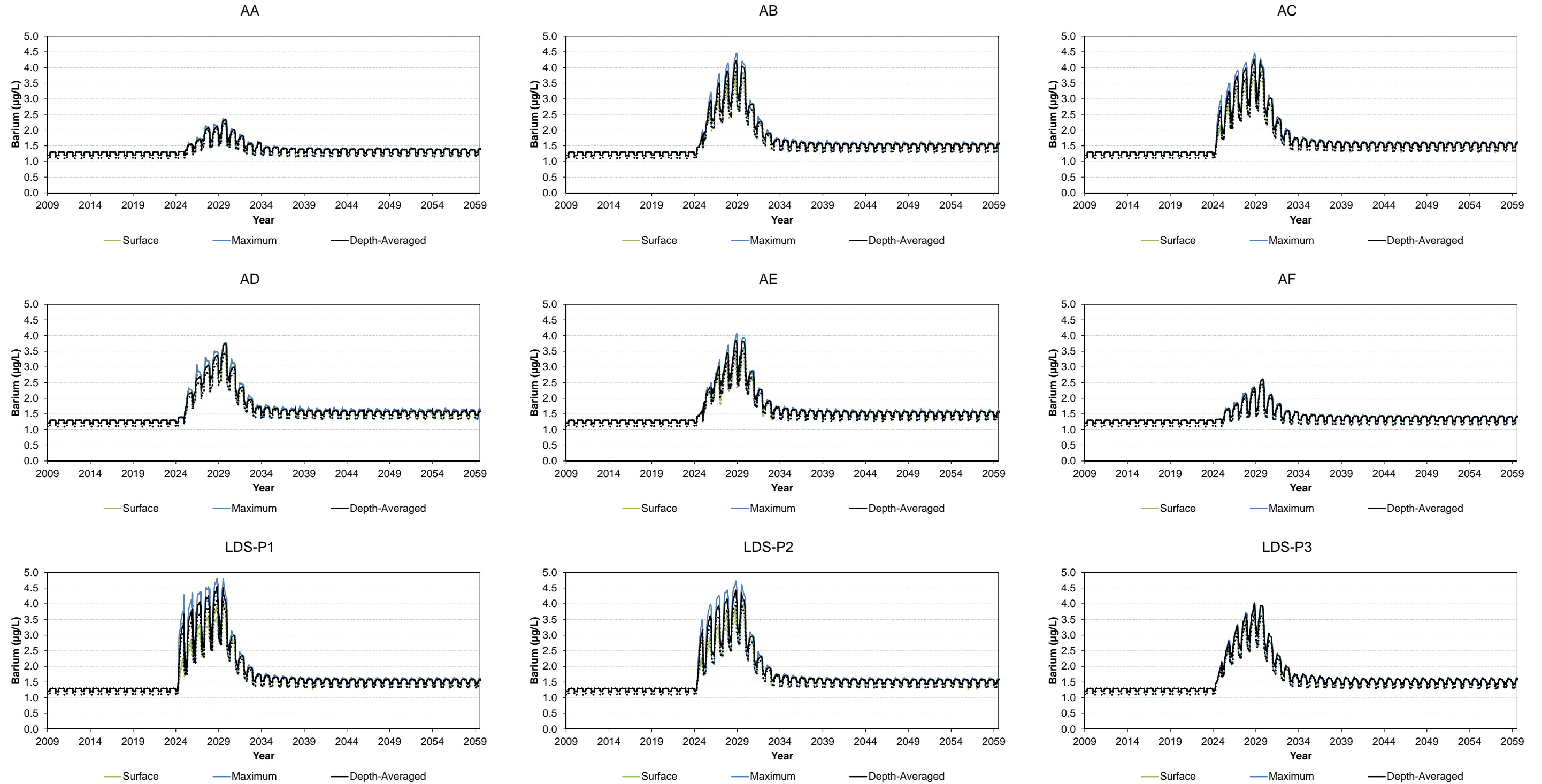
µg/L = micrograms per litre; solid lines represent total metals; dotted lines represent dissolved metals; AA, AB, AC, AD, AE, and AF are calibration locations in Lac du Sauvage (Map 8F2.2-1); LDS-P1, LDS-P2, and LDS-P3 are the primary locations used in the water quality assessment (Map 8F2.2-1).

Figure 8F4-19 Predicted Total and Dissolved Arsenic Concentrations in Lac du Sauvage



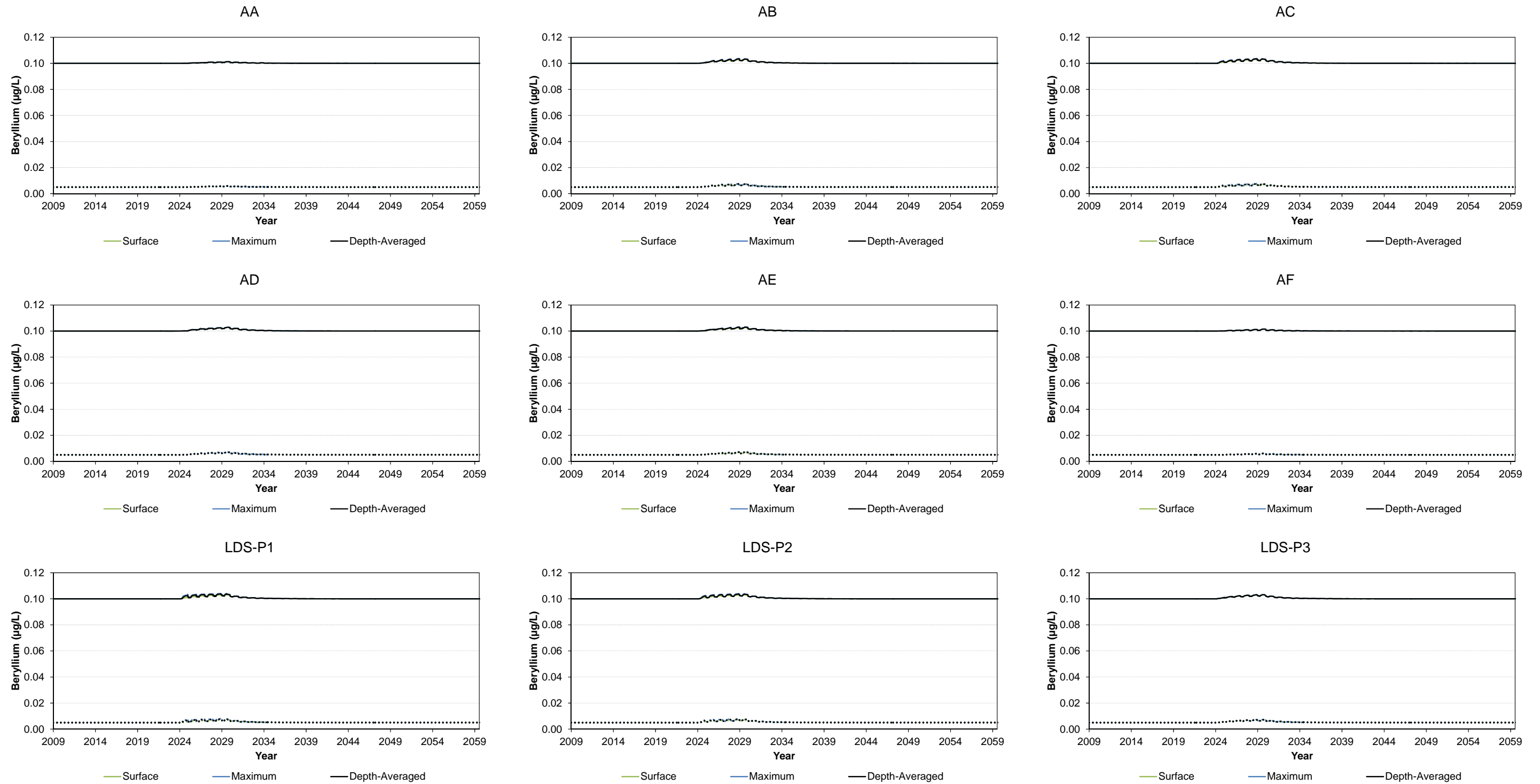
µg/L = micrograms per litre; solid lines represent total metals; dotted lines represent dissolved metals; AA, AB, AC, AD, AE, and AF are calibration locations in Lac du Sauvage (Map 8F2.2-1); LDS-P1, LDS-P2, and LDS-P3 are the primary locations used in the water quality assessment (Map 8F2.2-1).

Figure 8F4-20 Predicted Total and Dissolved Barium Concentrations in Lac du Sauvage



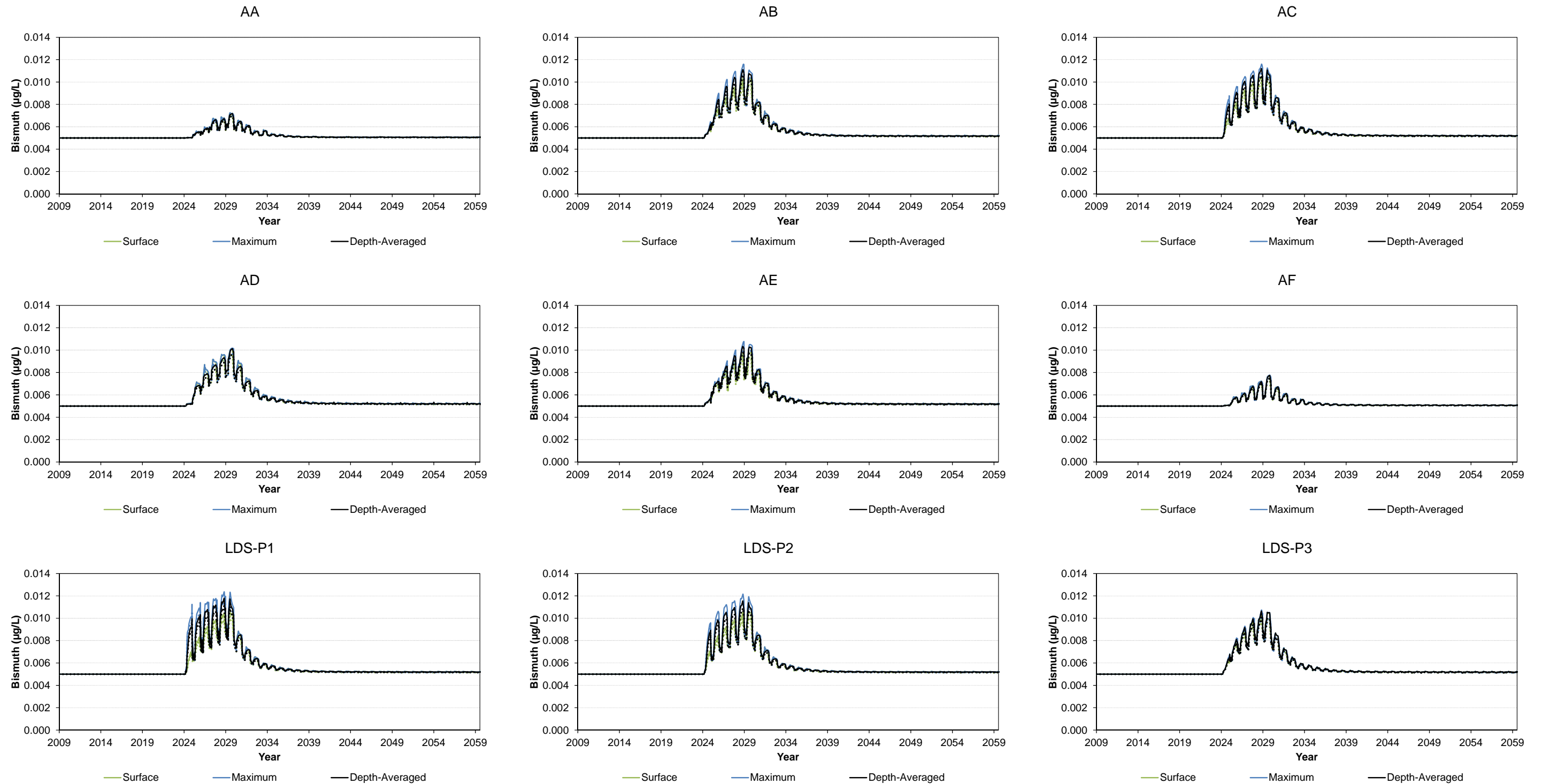
µg/L = micrograms per litre; solid lines represent total metals; dotted lines represent dissolved metals; AA, AB, AC, AD, AE, and AF are calibration locations in Lac du Sauvage (Map 8F2.2-1); LDS-P1, LDS-P2, and LDS-P3 are the primary locations used in the water quality assessment (Map 8F2.2-1).

Figure 8F4-21 Predicted Total and Dissolved Beryllium Concentrations in Lac du Sauvage



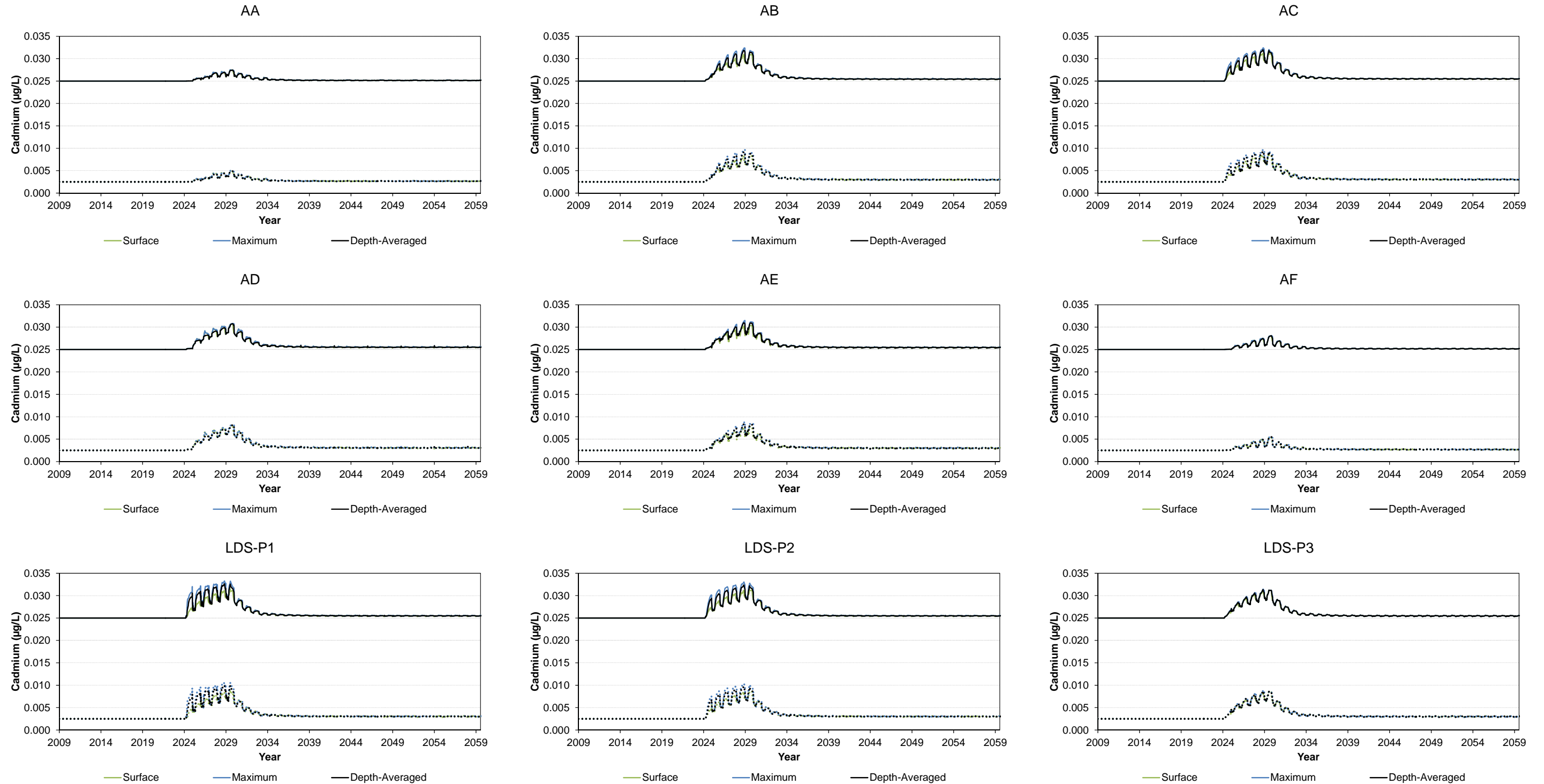
µg/L = micrograms per litre; solid lines represent total metals; dotted lines represent dissolved metals; AA, AB, AC, AD, AE, and AF are calibration locations in Lac du Sauvage (Map 8F2.2-1); LDS-P1, LDS-P2, and LDS-P3 are the primary locations used in the water quality assessment (Map 8F2.2-1).

Figure 8F4-22 Predicted Total and Dissolved Bismuth Concentrations in Lac du Sauvage



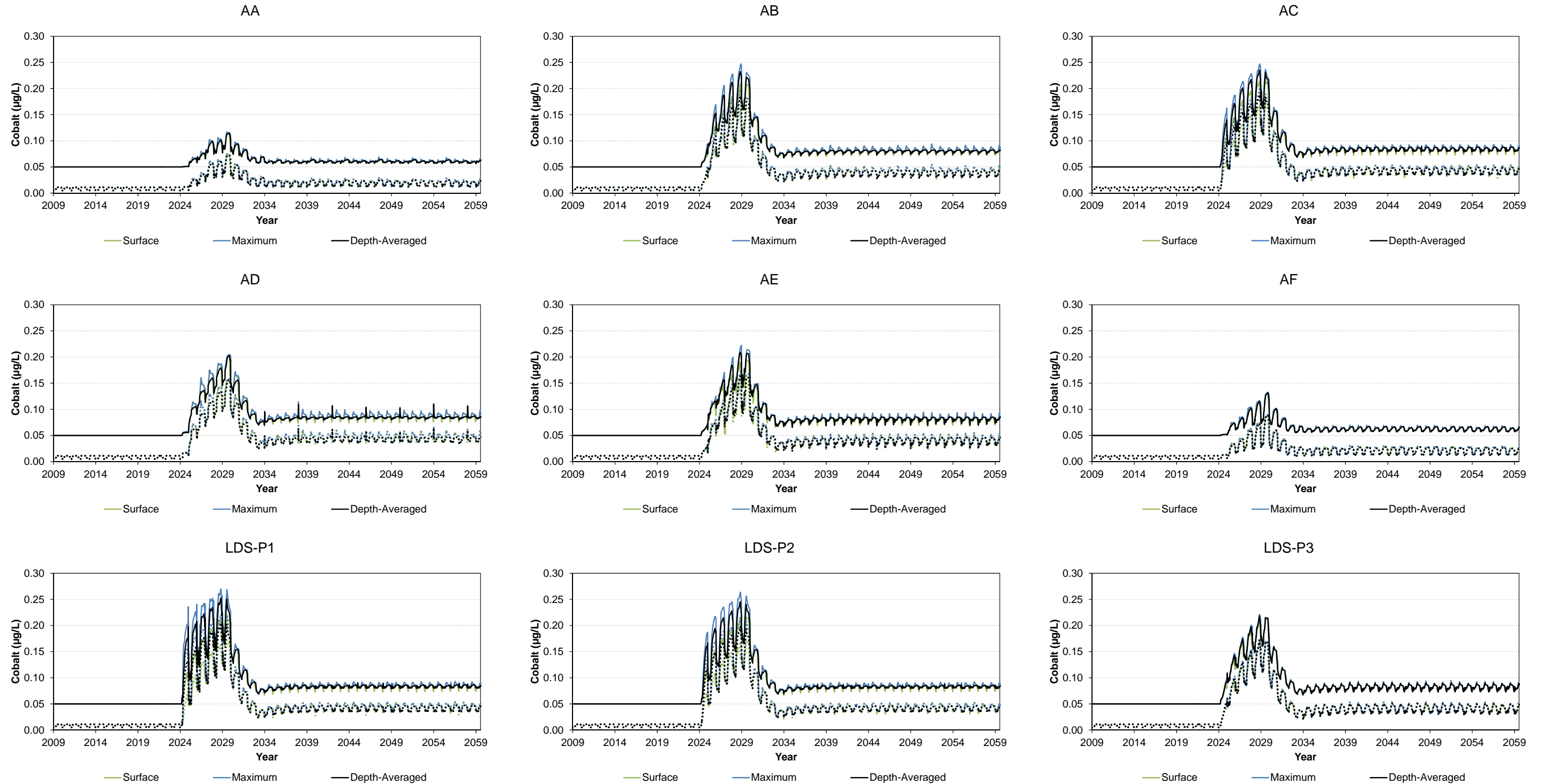
µg/L = micrograms per litre; solid lines represent total metals; dotted lines represent dissolved metals; AA, AB, AC, AD, AE, and AF are calibration locations in Lac du Sauvage (Map 8F2.2-1); LDS-P1, LDS-P2, and LDS-P3 are the primary locations used in the water quality assessment (Map 8F2.2-1).

Figure 8F4-23 Predicted Total and Dissolved Cadmium Concentrations in Lac du Sauvage



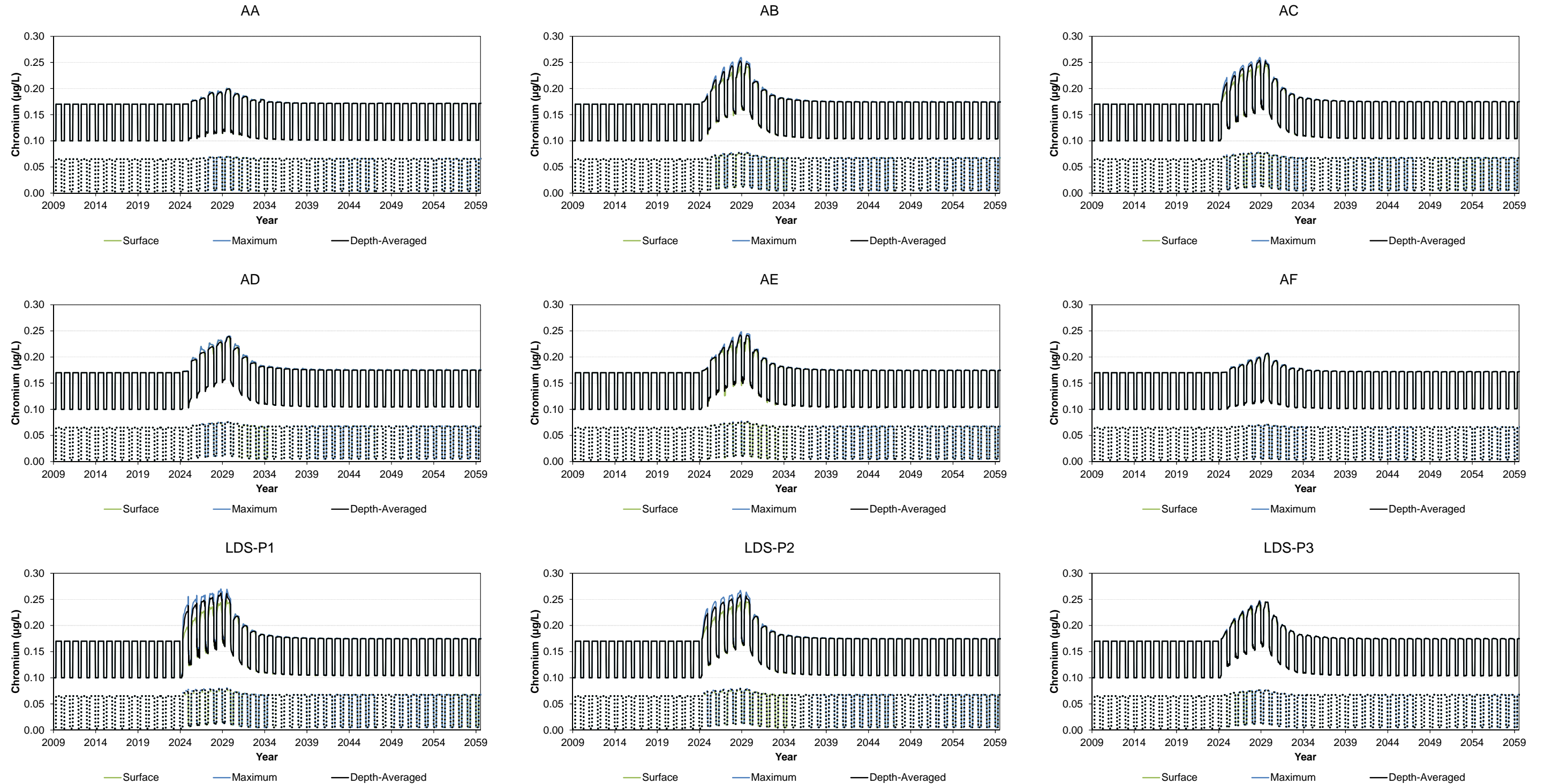
µg/L = micrograms per litre; solid lines represent total metals; dotted lines represent dissolved metals; AA, AB, AC, AD, AE, and AF are calibration locations in Lac du Sauvage (Map 8F2.2-1); LDS-P1, LDS-P2, and LDS-P3 are the primary locations used in the water quality assessment (Map 8F2.2-1).

Figure 8F4-24 Predicted Total and Dissolved Cobalt Concentrations in Lac du Sauvage



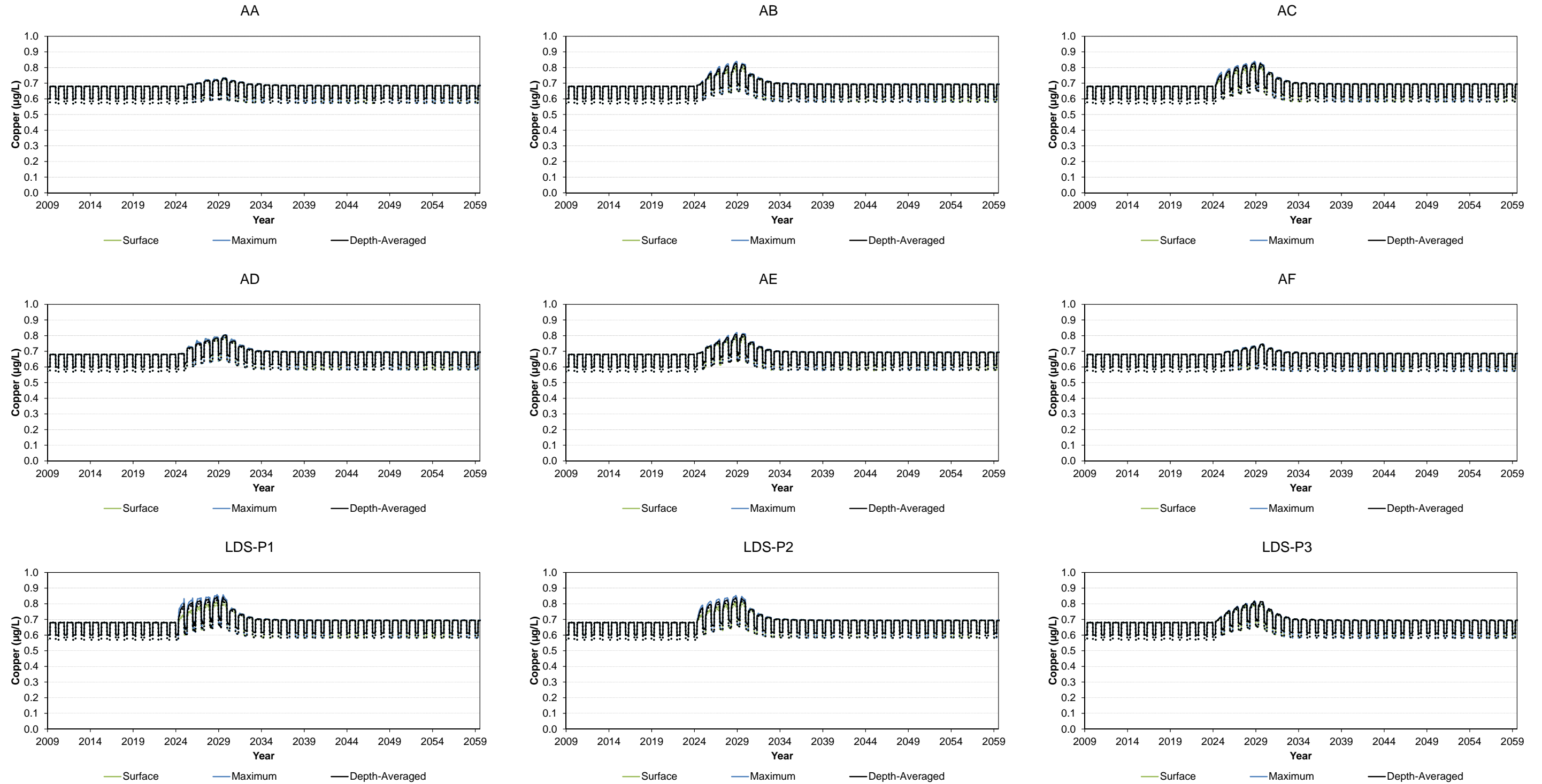
µg/L = micrograms per litre; solid lines represent total metals; dotted lines represent dissolved metals; AA, AB, AC, AD, AE, and AF are calibration locations in Lac du Sauvage (Map 8F2.2-1); LDS-P1, LDS-P2, and LDS-P3 are the primary locations used in the water quality assessment (Map 8F2.2-1).

Figure 8F4-25 Predicted Total and Dissolved Chromium Concentrations in Lac du Sauvage



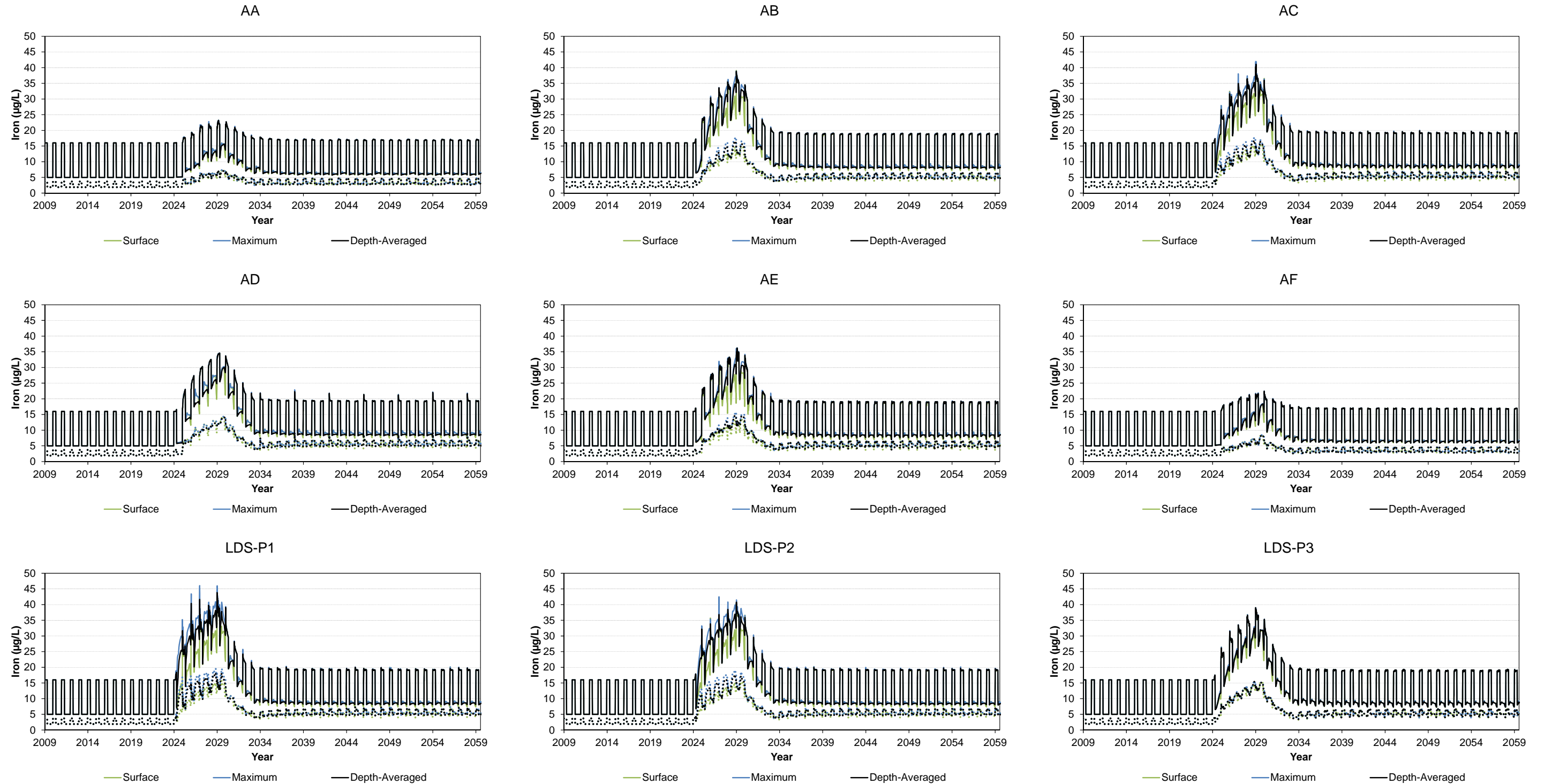
µg/L = micrograms per litre; solid lines represent total metals; dotted lines represent dissolved metals; AA, AB, AC, AD, AE, and AF are calibration locations in Lac du Sauvage (Map 8F2.2-1); LDS-P1, LDS-P2, and LDS-P3 are the primary locations used in the water quality assessment (Map 8F2.2-1).

Figure 8F4-26 Predicted Total and Dissolved Copper Concentrations in Lac du Sauvage



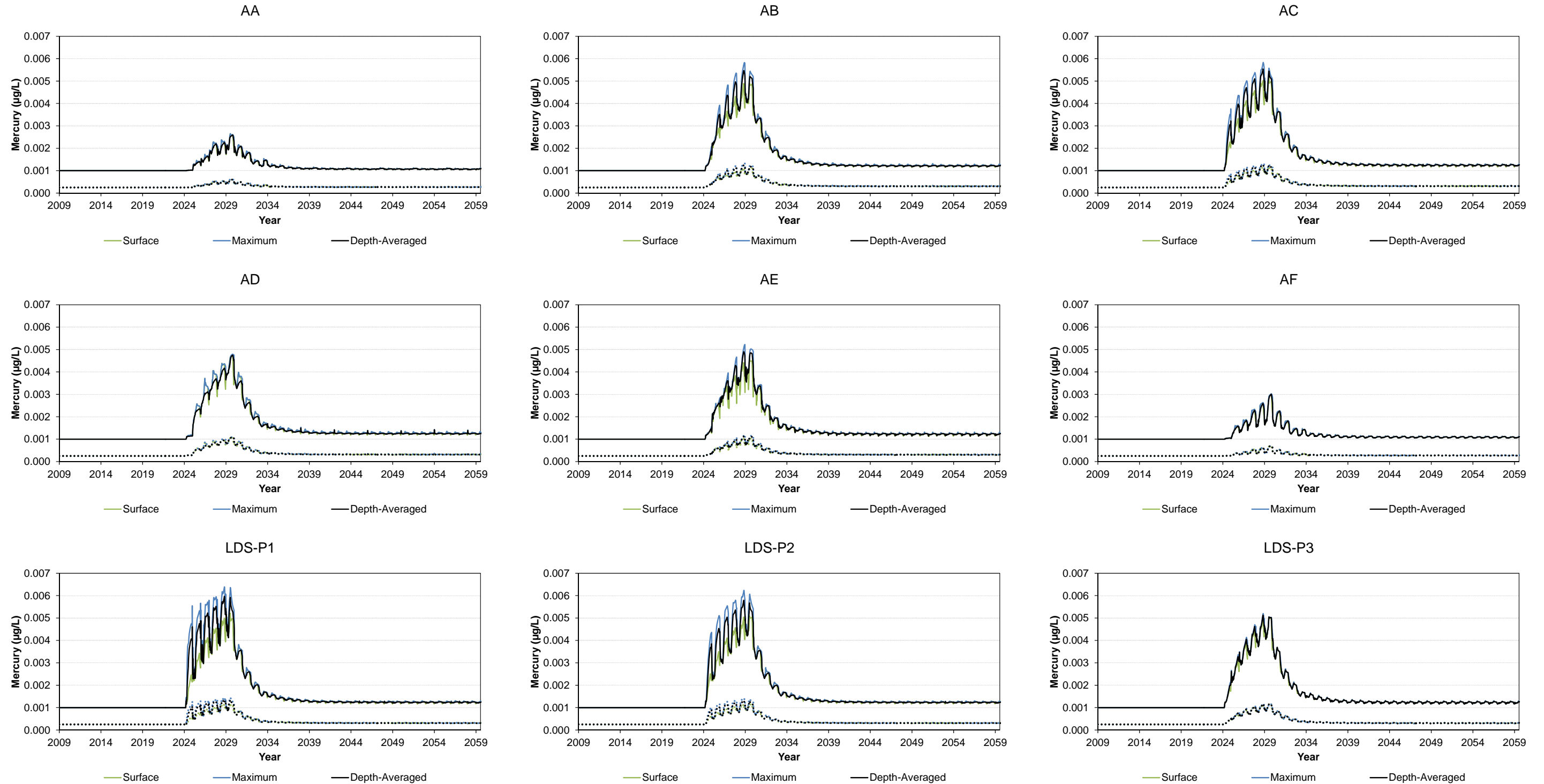
µg/L = micrograms per litre; solid lines represent total metals; dotted lines represent dissolved metals; AA, AB, AC, AD, AE, and AF are calibration locations in Lac du Sauvage (Map 8F2.2-1); LDS-P1, LDS-P2, and LDS-P3 are the primary locations used in the water quality assessment (Map 8F2.2-1).

Figure 8F4-27 Predicted Total and Dissolved Iron Concentrations in Lac du Sauvage



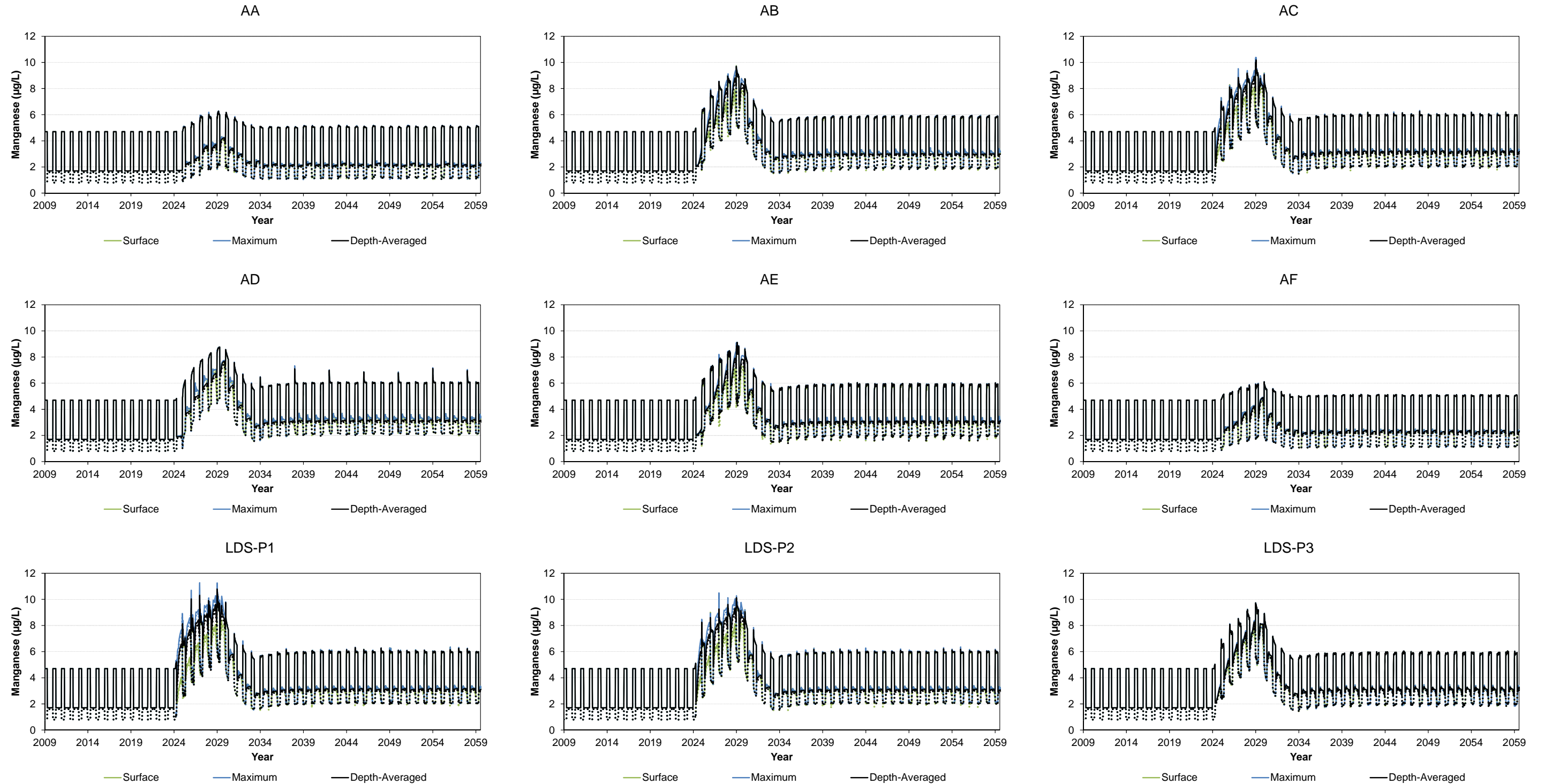
µg/L = micrograms per litre; solid lines represent total metals; dotted lines represent dissolved metals; AA, AB, AC, AD, AE, and AF are calibration locations in Lac du Sauvage (Map 8F2.2-1); LDS-P1, LDS-P2, and LDS-P3 are the primary locations used in the water quality assessment (Map 8F2.2-1).

Figure 8F4-28 Predicted Total and Dissolved Mercury Concentrations in Lac du Sauvage



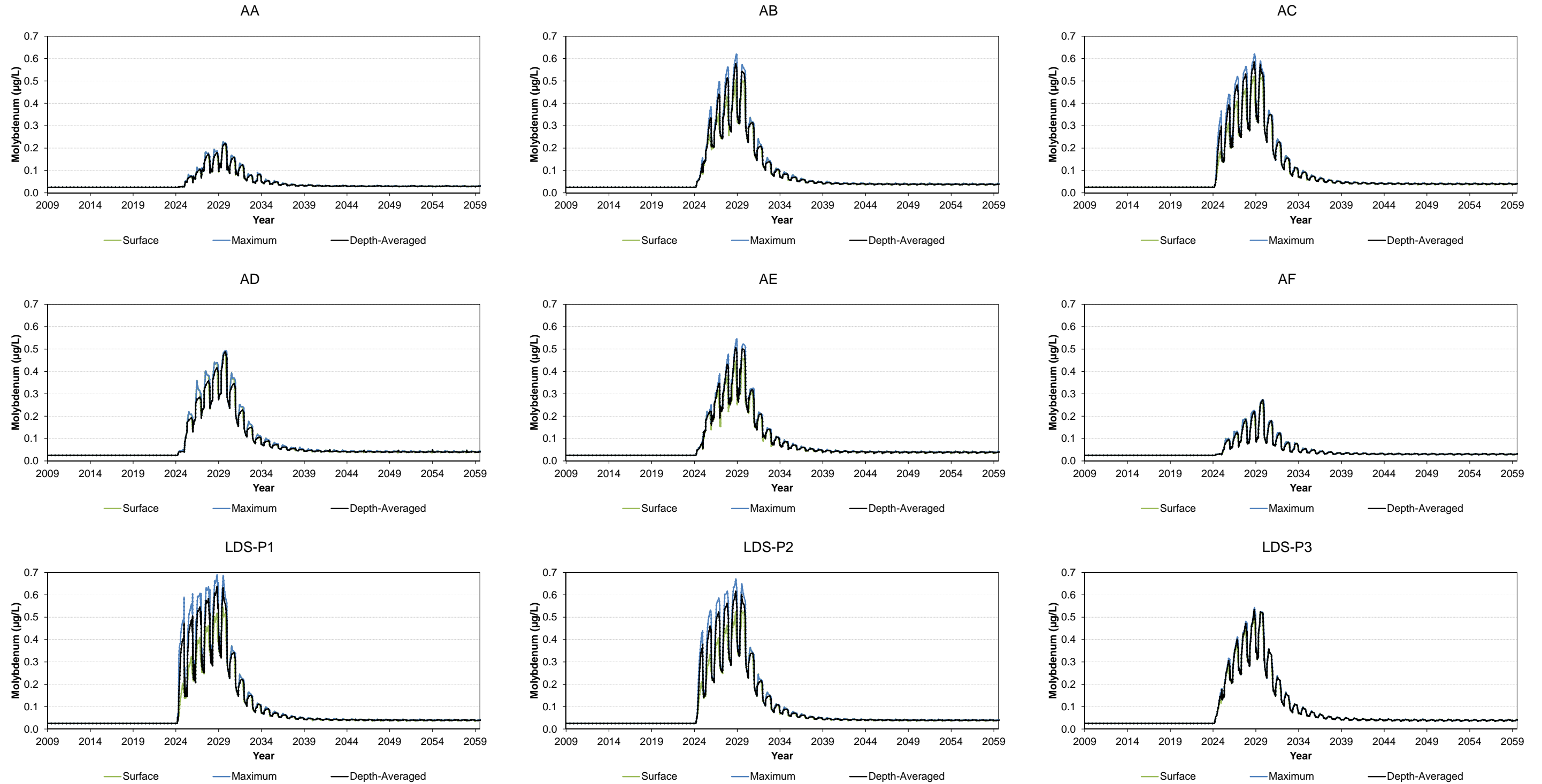
µg/L = micrograms per litre; solid lines represent total metals; dotted lines represent dissolved metals; AA, AB, AC, AD, AE, and AF are calibration locations in Lac du Sauvage (Map 8F2.2-1); LDS-P1, LDS-P2, and LDS-P3 are the primary locations used in the water quality assessment (Map 8F2.2-1).

Figure 8F4-29 Predicted Total and Dissolved Manganese Concentrations in Lac du Sauvage



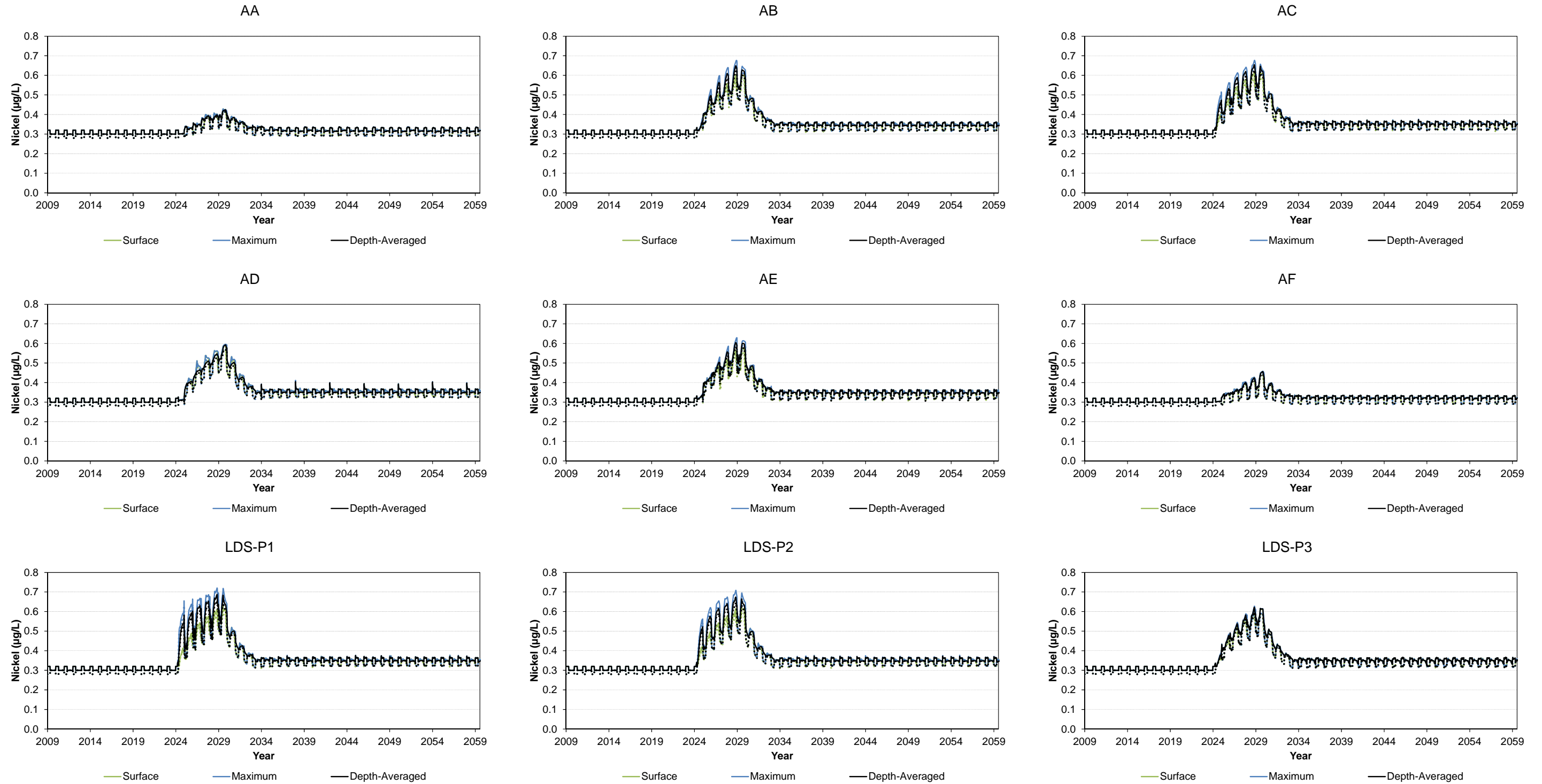
µg/L = micrograms per litre; solid lines represent total metals; dotted lines represent dissolved metals; AA, AB, AC, AD, AE, and AF are calibration locations in Lac du Sauvage (Map 8F2.2-1); LDS-P1, LDS-P2, and LDS-P3 are the primary locations used in the water quality assessment (Map 8F2.2-1).

Figure 8F4-30 Predicted Total and Dissolved Molybdenum Concentrations in Lac du Sauvage



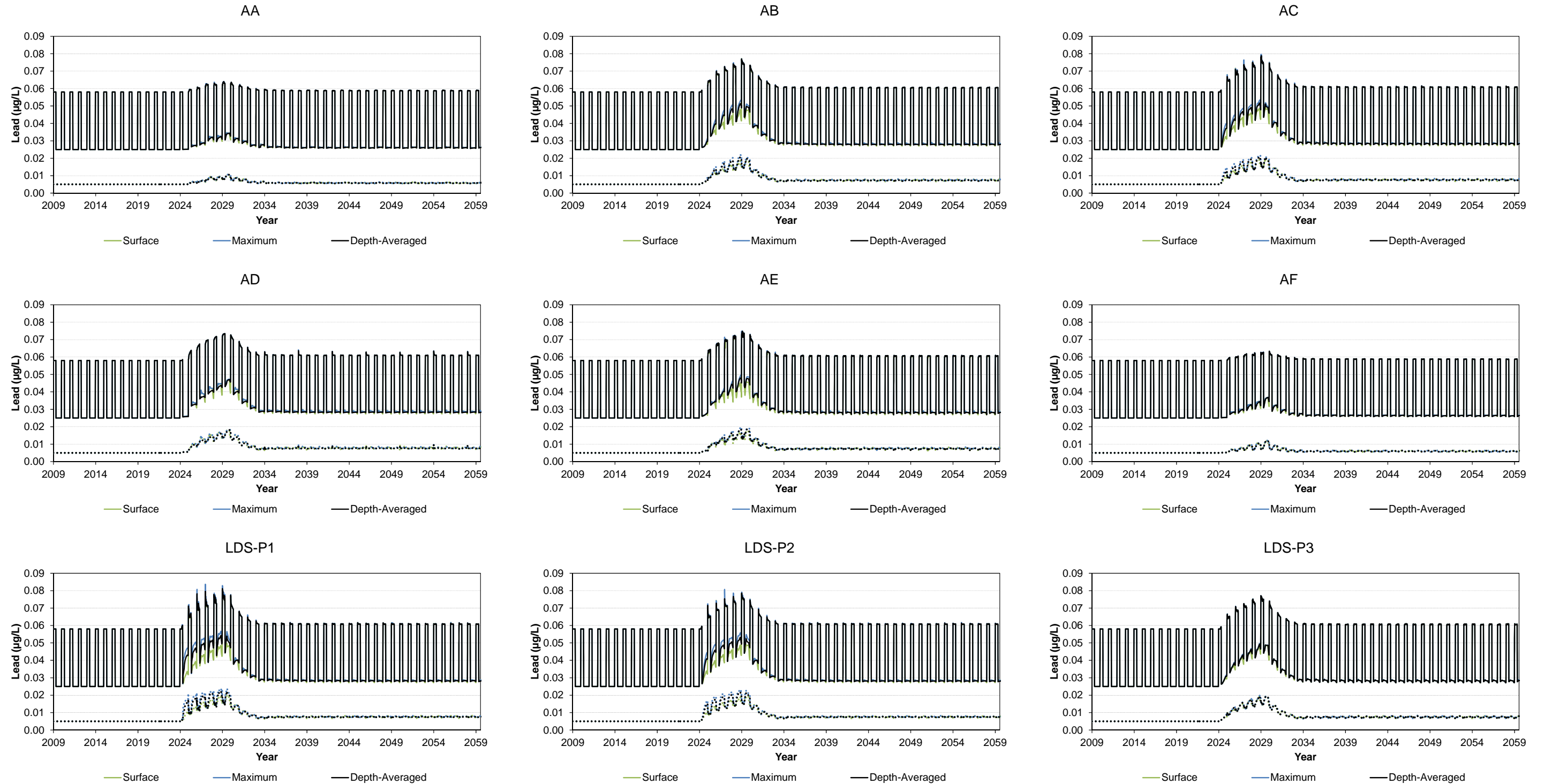
µg/L = micrograms per litre; solid lines represent total metals; dotted lines represent dissolved metals; AA, AB, AC, AD, AE, and AF are calibration locations in Lac du Sauvage (Map 8F2.2-1); LDS-P1, LDS-P2, and LDS-P3 are the primary locations used in the water quality assessment (Map 8F2.2-1).

Figure 8F4-31 Predicted Total and Dissolved Nickel Concentrations in Lac du Sauvage



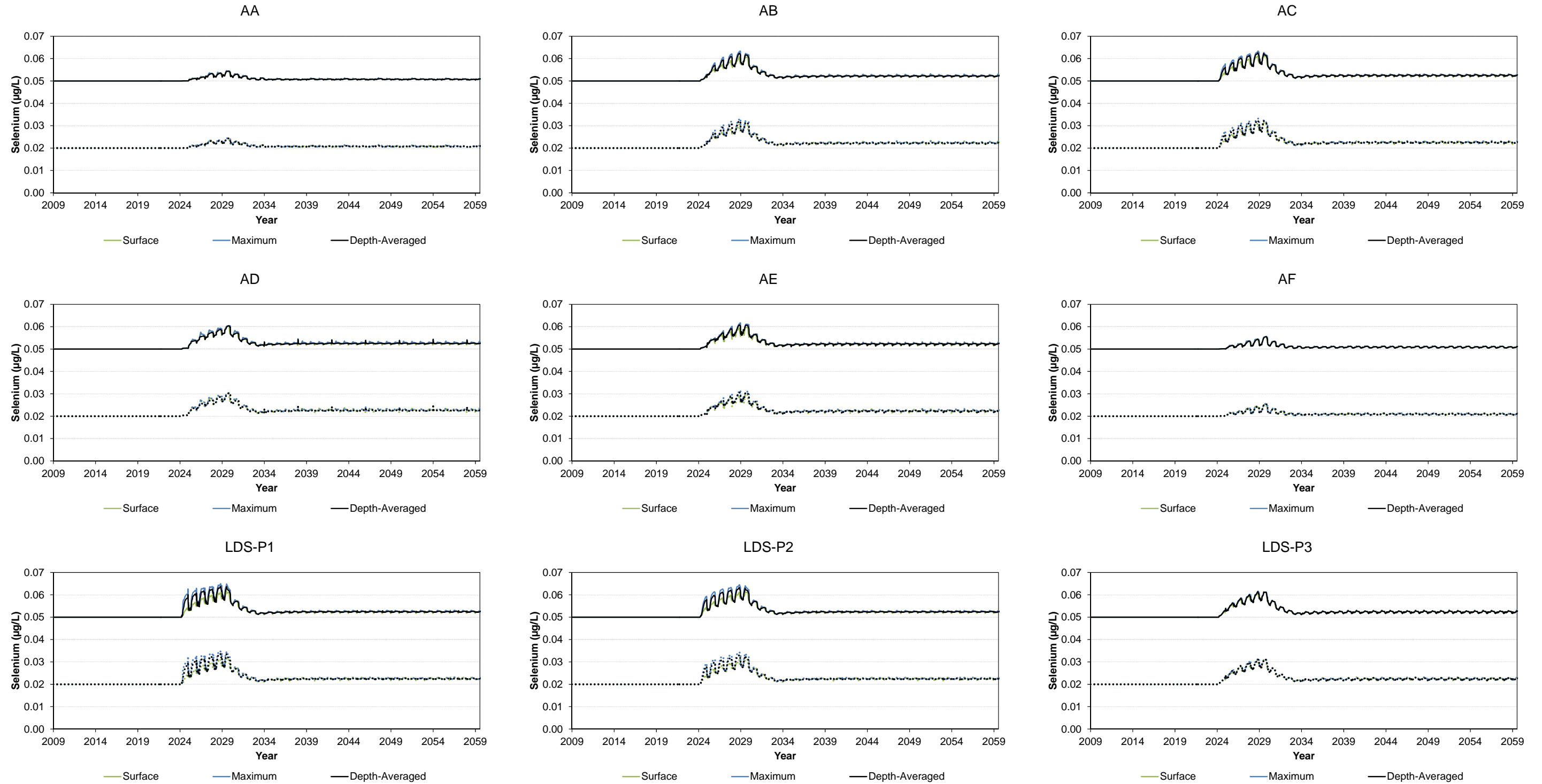
µg/L = micrograms per litre; solid lines represent total metals; dotted lines represent dissolved metals; AA, AB, AC, AD, AE, and AF are calibration locations in Lac du Sauvage (Map 8F2.2-1); LDS-P1, LDS-P2, and LDS-P3 are the primary locations used in the water quality assessment (Map 8F2.2-1).

Figure 8F4-32 Predicted Total and Dissolved Lead Concentrations in Lac du Sauvage



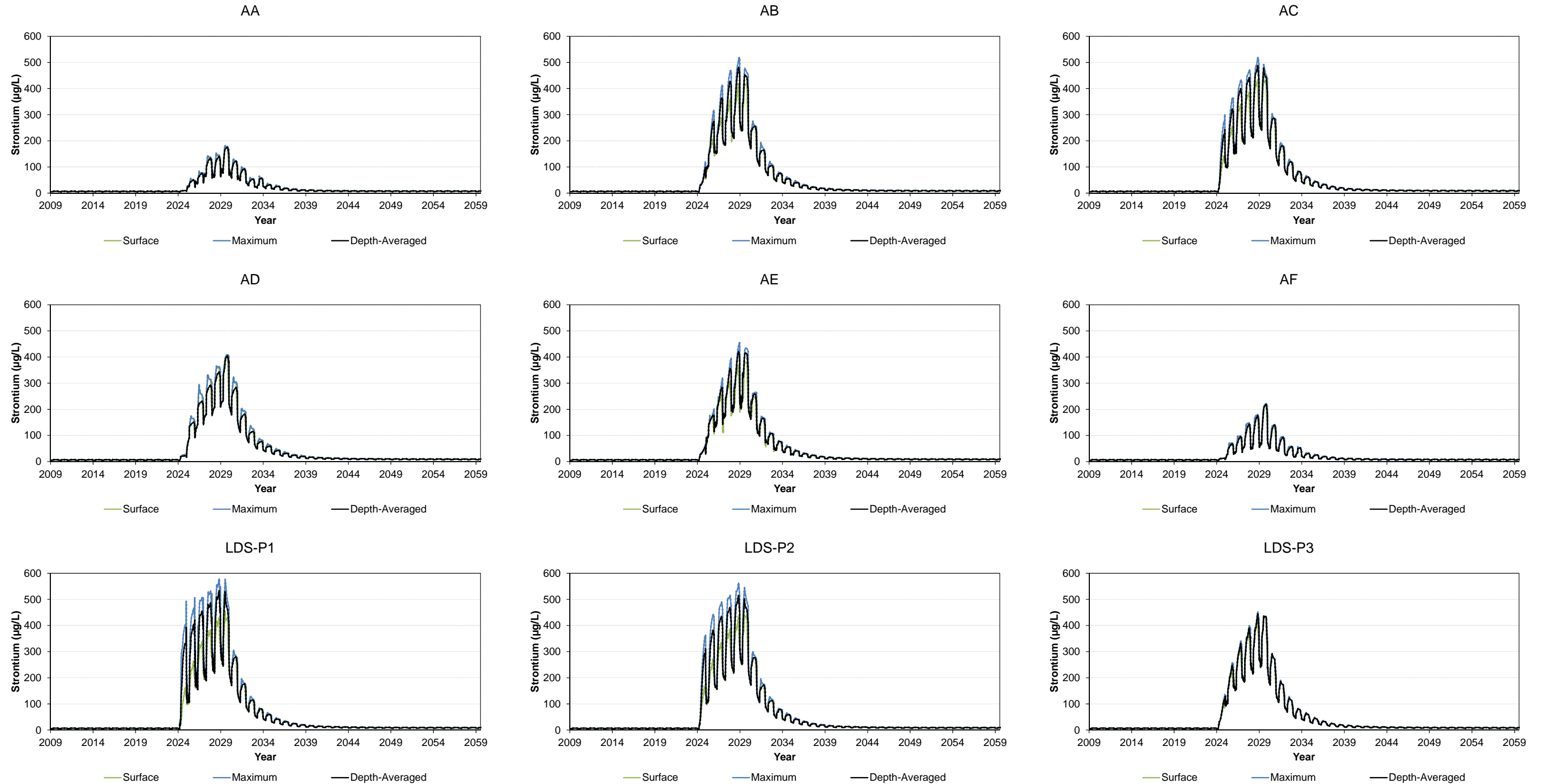
µg/L = micrograms per litre; solid lines represent total metals; dotted lines represent dissolved metals; AA, AB, AC, AD, AE, and AF are calibration locations in Lac du Sauvage (Map 8F2.2-1); LDS-P1, LDS-P2, and LDS-P3 are the primary locations used in the water quality assessment (Map 8F2.2-1).

Figure 8F4-33 Predicted Total and Dissolved Selenium Concentrations in Lac du Sauvage



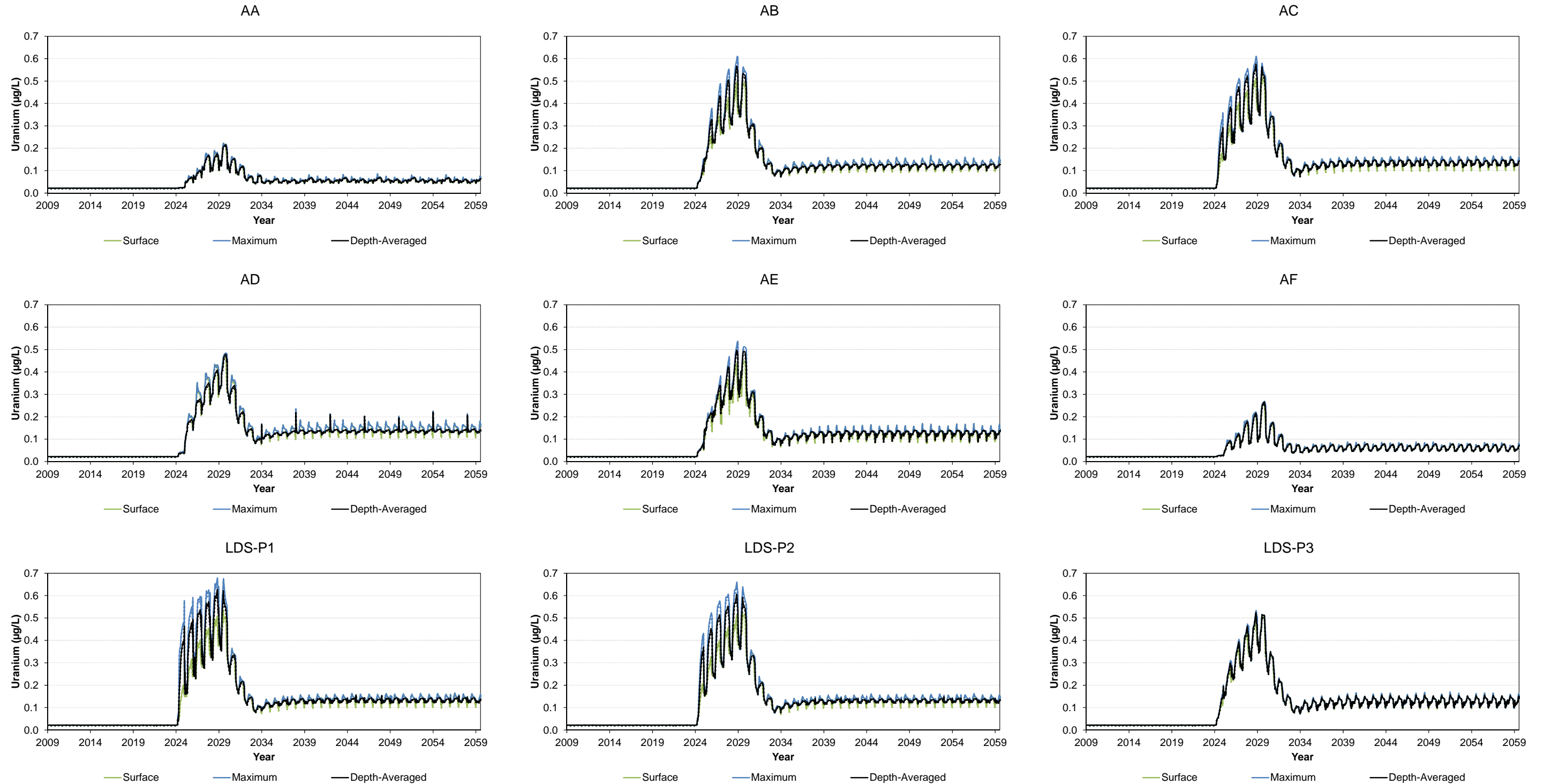
µg/L = micrograms per litre; solid lines represent total metals; dotted lines represent dissolved metals; AA, AB, AC, AD, AE, and AF are calibration locations in Lac du Sauvage (Map 8F2.2-1); LDS-P1, LDS-P2, and LDS-P3 are the primary locations used in the water quality assessment (Map 8F2.2-1).

Figure 8F4-34 Predicted Total and Dissolved Strontium Concentrations in Lac du Sauvage



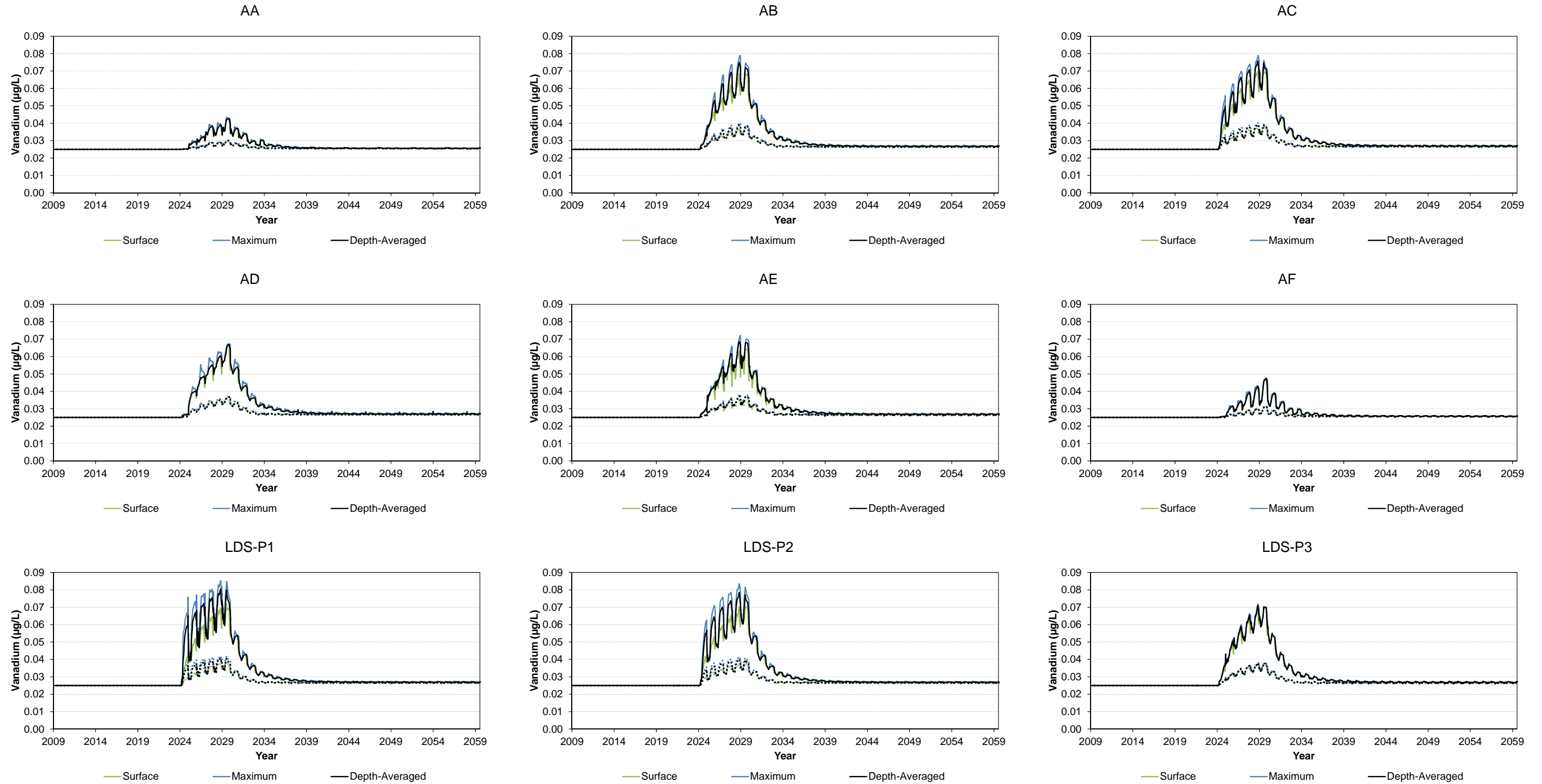
µg/L = micrograms per litre; solid lines represent total metals; dotted lines represent dissolved metals; AA, AB, AC, AD, AE, and AF are calibration locations in Lac du Sauvage (Map 8F2.2-1); LDS-P1, LDS-P2, and LDS-P3 are the primary locations used in the water quality assessment (Map 8F2.2-1).

Figure 8F4-35 Predicted Total and Dissolved Uranium Concentrations in Lac du Sauvage



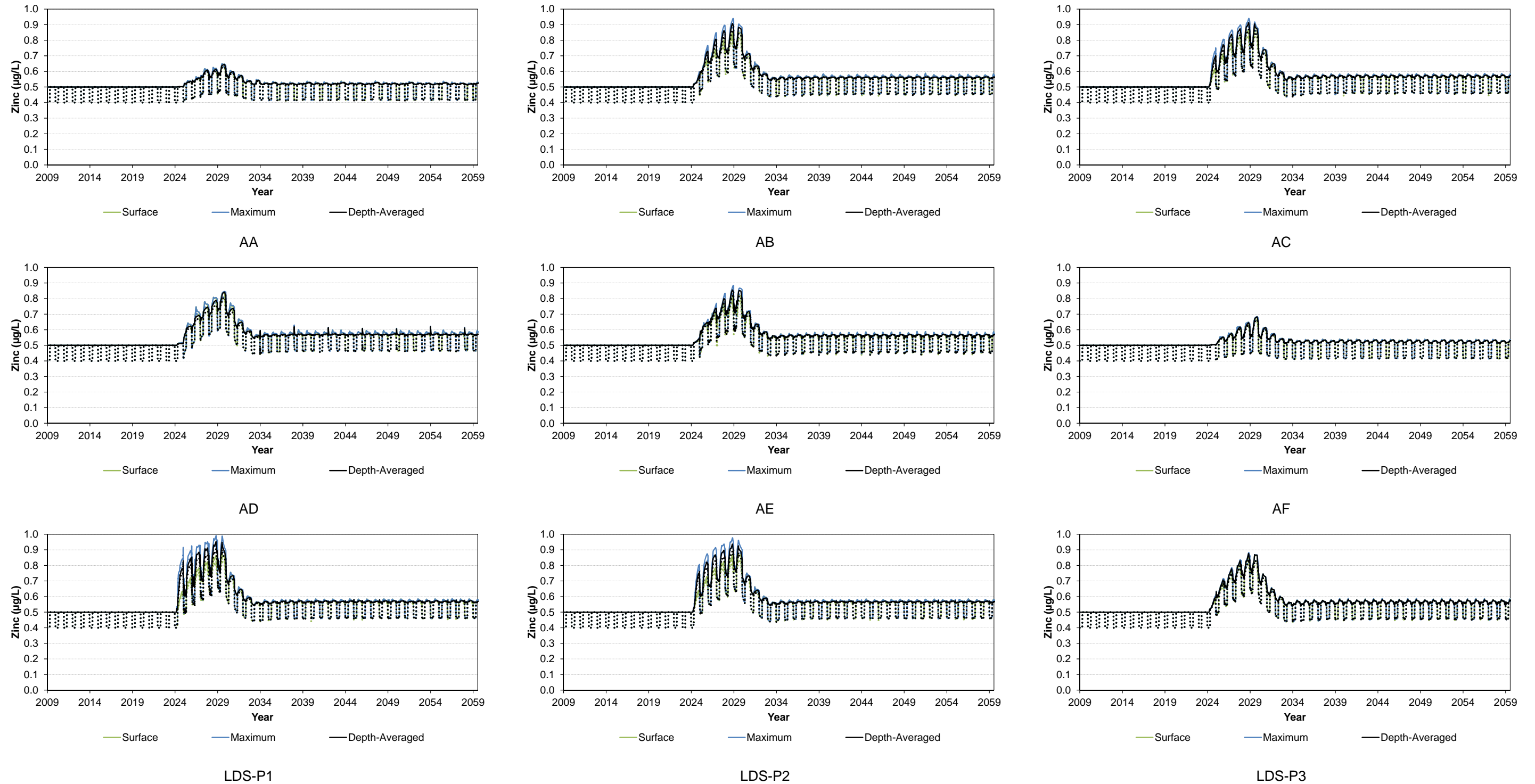
µg/L = micrograms per litre; solid lines represent total metals; dotted lines represent dissolved metals; AA, AB, AC, AD, AE, and AF are calibration locations in Lac du Sauvage (Map 8F2.2-1); LDS-P1, LDS-P2, and LDS-P3 are the primary locations used in the water quality assessment (Map 8F2.2-1).

Figure 8F4-36 Predicted Total and Dissolved Vanadium Concentrations in Lac du Sauvage



µg/L = micrograms per litre; solid lines represent total metals; dotted lines represent dissolved metals; AA, AB, AC, AD, AE, and AF are calibration locations in Lac du Sauvage (Map 8F2.2-1); LDS-P1, LDS-P2, and LDS-P3 are the primary locations used in the water quality assessment (Map 8F2.2-1).

Figure 8F4-37 Predicted Total and Dissolved Zinc Concentrations in Lac du Sauvage



µg/L = micrograms per litre; solid lines represent total metals; dotted lines represent dissolved metals; AA, AB, AC, AD, AE, and AF are calibration locations in Lac du Sauvage (Map 8F2.2-1); LDS-P1, LDS-P2, and LDS-P3 are the primary locations used in the water quality assessment (Map 8F2.2-1).