



ATTACHMENT 8F4

PREDICTED CONSTITUENT CONCENTRATIONS IN LAC DU SAUVAGE

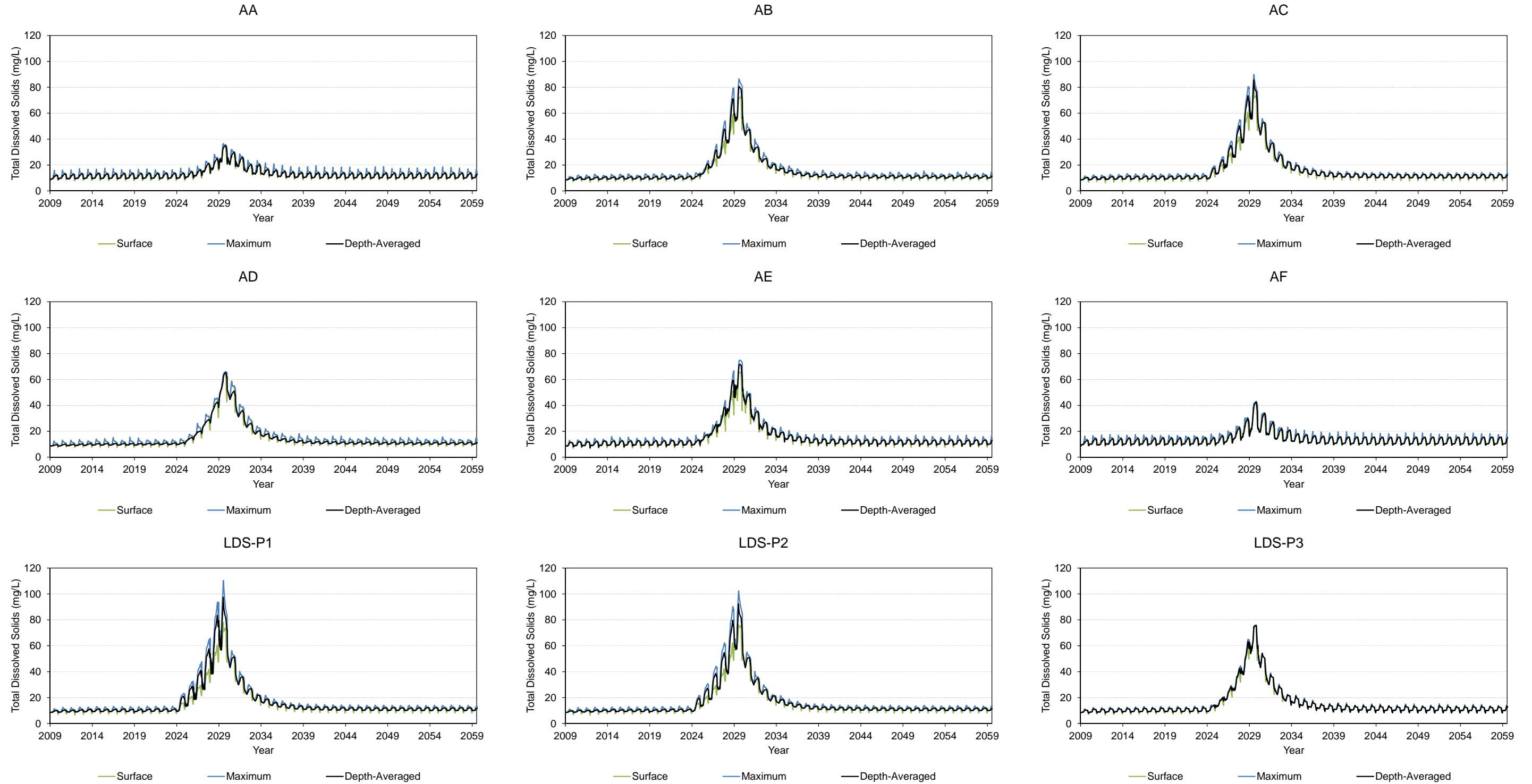
Figures

Figure 8F4-1	Predicted Total Dissolved Solids Concentrations in Lac du Sauvage	1
Figure 8F4-2	Predicted Total Ammonia Concentrations in Lac du Sauvage.....	2
Figure 8F4-3	Predicted Nitrate Concentrations in Lac du Sauvage	3
Figure 8F4-4	Predicted Total Nitrogen Concentrations in Lac du Sauvage	4
Figure 8F4-5	Predicted Orthophosphate Concentrations in Lac du Sauvage	5
Figure 8F4-6	Predicted Total Phosphorus Concentrations in Lac du Sauvage.....	6
Figure 8F4-7	Predicted Phytoplankton (as Chlorophyll a) Concentrations in Lac du Sauvage.....	7
Figure 8F4-8	Predicted Dissolved Oxygen Concentrations in Lac du Sauvage.....	8
Figure 8F4-9	Predicted Calcium Concentrations in Lac du Sauvage	9
Figure 8F4-10	Predicted Chloride Concentrations in Lac du Sauvage.....	10
Figure 8F4-11	Predicted Fluoride Concentrations in Lac du Sauvage	11
Figure 8F4-12	Predicted Magnesium Concentrations in Lac du Sauvage	12
Figure 8F4-13	Predicted Potassium Concentrations in Lac du Sauvage	13
Figure 8F4-14	Predicted Reactive Silica Concentrations in Lac du Sauvage	14
Figure 8F4-15	Predicted Sodium Concentrations in Lac du Sauvage.....	15
Figure 8F4-16	Predicted Sulphate Concentrations in Lac du Sauvage.....	16
Figure 8F4-17	Predicted Total and Dissolved Silver Concentrations in Lac du Sauvage	17
Figure 8F4-18	Predicted Total and Dissolved Aluminum Concentrations in Lac du Sauvage	18
Figure 8F4-19	Predicted Total and Dissolved Arsenic Concentrations in Lac du Sauvage	19
Figure 8F4-20	Predicted Total and Dissolved Barium Concentrations in Lac du Sauvage.....	20
Figure 8F4-21	Predicted Total and Dissolved Beryllium Concentrations in Lac du Sauvage	21
Figure 8F4-22	Predicted Total and Dissolved Bismuth Concentrations in Lac du Sauvage	22
Figure 8F4-23	Predicted Total and Dissolved Cadmium Concentrations in Lac du Sauvage.....	23
Figure 8F4-24	Predicted Total and Dissolved Cobalt Concentrations in Lac du Sauvage.....	24
Figure 8F4-25	Predicted Total and Dissolved Chromium Concentrations in Lac du Sauvage.....	25
Figure 8F4-26	Predicted Total and Dissolved Copper Concentrations in Lac du Sauvage	26
Figure 8F4-27	Predicted Total and Dissolved Iron Concentrations in Lac du Sauvage	27
Figure 8F4-28	Predicted Total and Dissolved Mercury Concentrations in Lac du Sauvage	28
Figure 8F4-29	Predicted Total and Dissolved Manganese Concentrations in Lac du Sauvage.....	29
Figure 8F4-30	Predicted Total and Dissolved Molybdenum Concentrations in Lac du Sauvage.....	30
Figure 8F4-31	Predicted Total and Dissolved Nickel Concentrations in Lac du Sauvage	31
Figure 8F4-32	Predicted Total and Dissolved Lead Concentrations in Lac du Sauvage	32
Figure 8F4-33	Predicted Total and Dissolved Selenium Concentrations in Lac du Sauvage	33
Figure 8F4-34	Predicted Total and Dissolved Strontium Concentrations in Lac du Sauvage.....	34
Figure 8F4-35	Predicted Total and Dissolved Uranium Concentrations in Lac du Sauvage.....	35
Figure 8F4-36	Predicted Total and Dissolved Vanadium Concentrations in Lac du Sauvage.....	36
Figure 8F4-37	Predicted Total and Dissolved Zinc Concentrations in Lac du Sauvage	37

Units of Measure

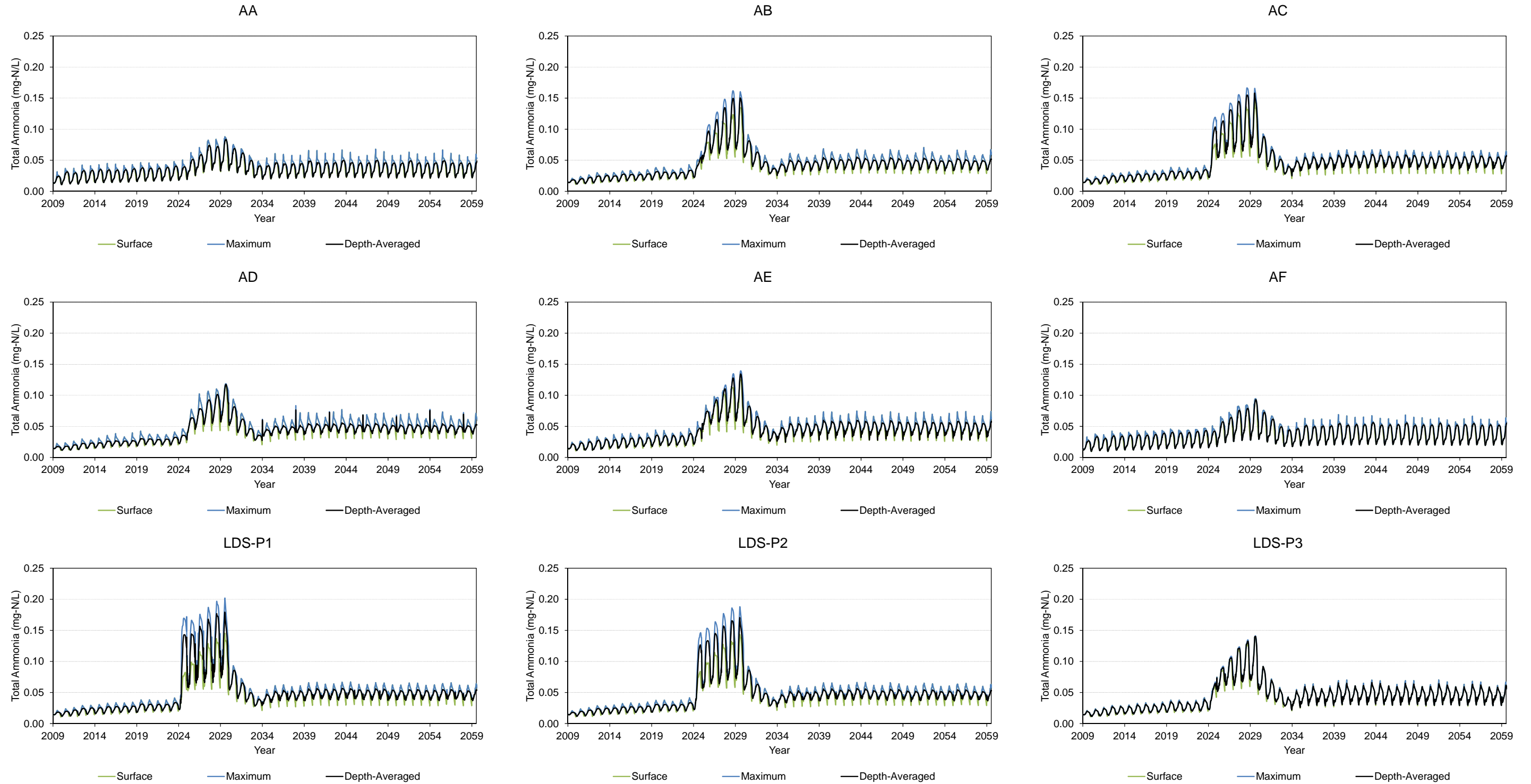
Unit	Definition
µg/L	micrograms per litre
mg/L	milligrams per litre
mg N/L	milligrams nitrogen per litre
mg P/L	milligrams phosphorus per litre

Figure 8F4-1 Predicted Total Dissolved Solids Concentrations in Lac du Sauvage



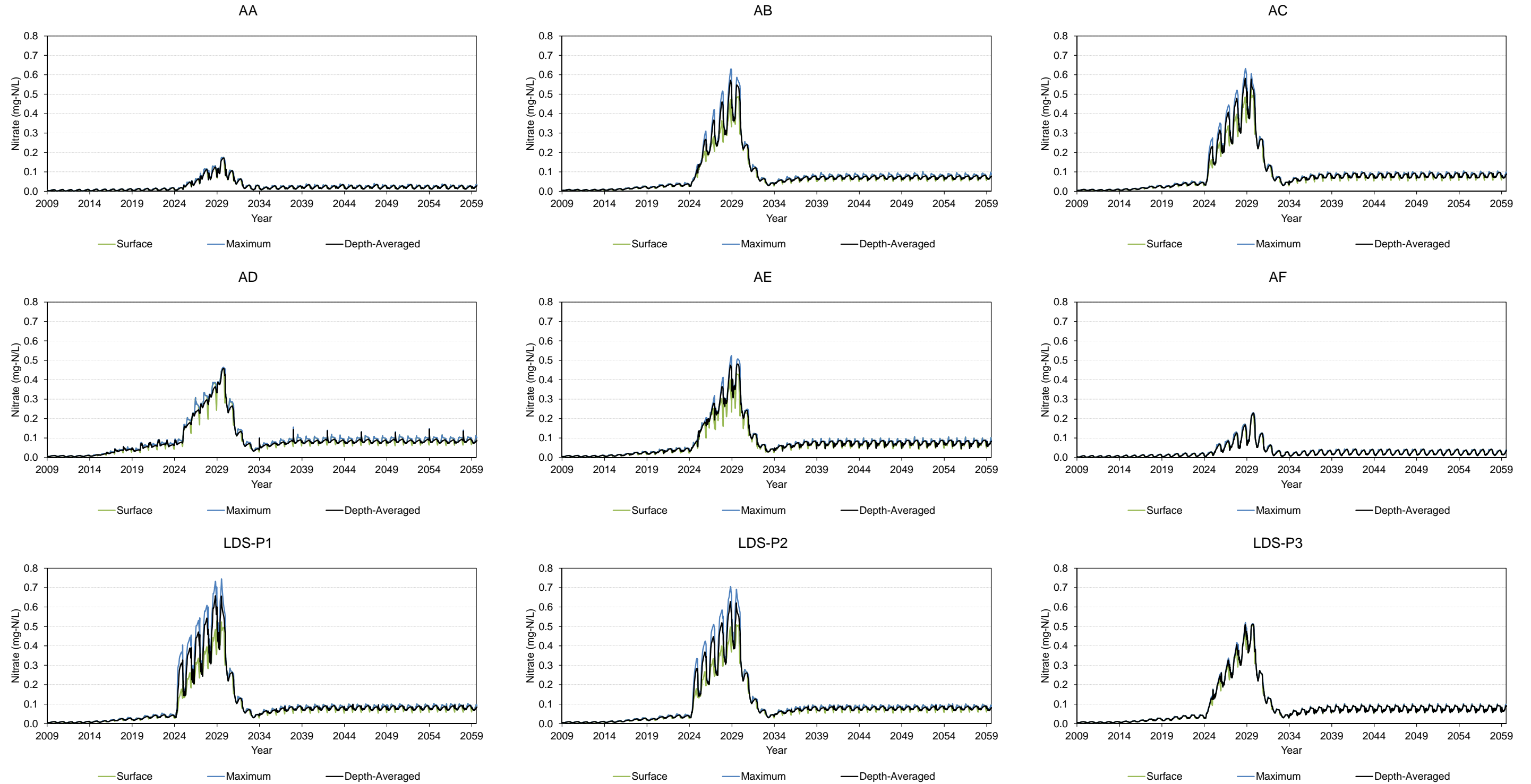
mg/L = milligrams per litre; AA, AB, AC, AD, AE, and AF are calibration locations in Lac du Sauvage (Map 8F2.2-1); LDS-P1, LDS-P2, and LDS-P3 are the primary locations used in the water quality assessment (Map 8F2.2-1).

Figure 8F4-2 Predicted Total Ammonia Concentrations in Lac du Sauvage



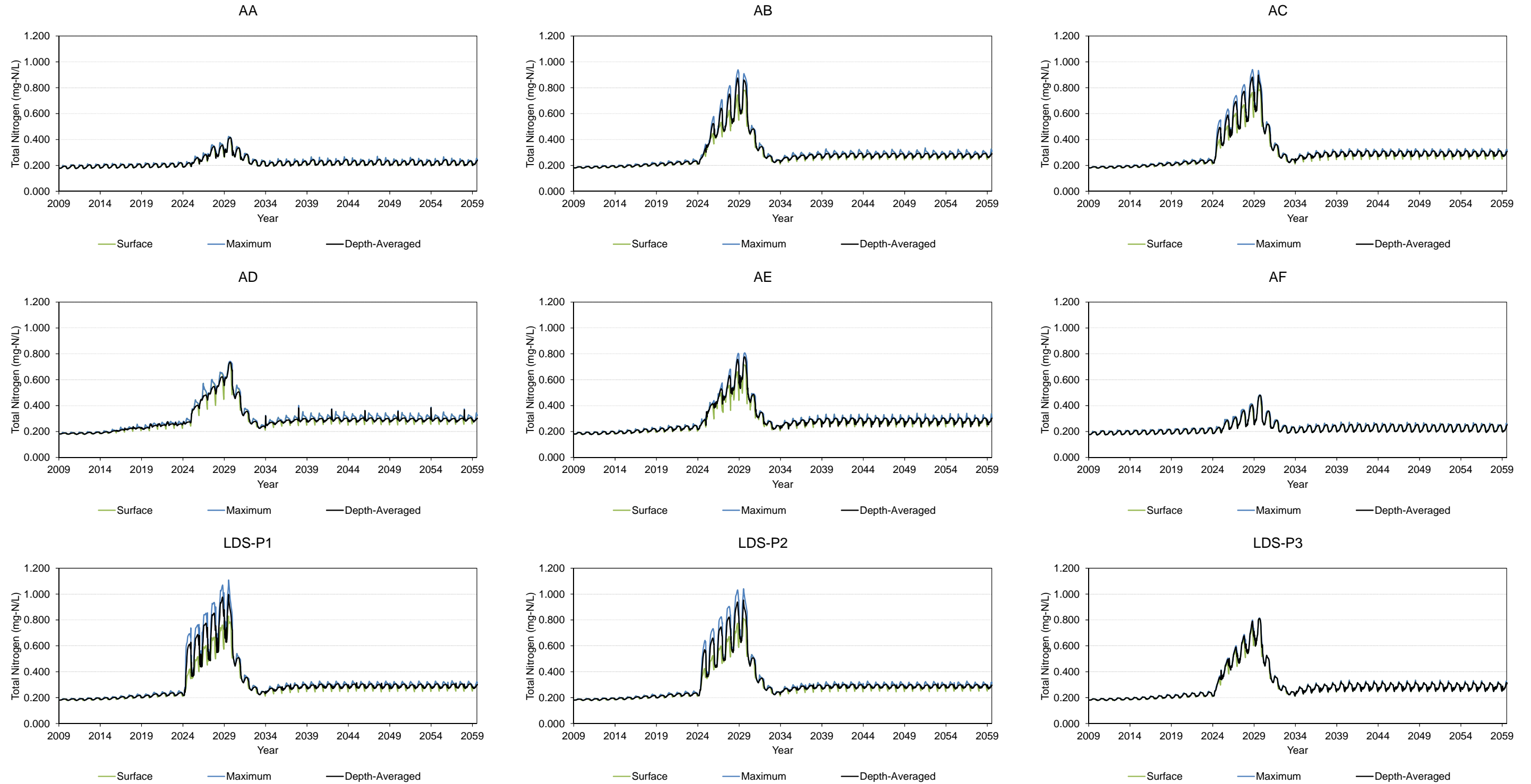
mg N/L = milligrams nitrogen per litre; AA, AB, AC, AD, AE, and AF are calibration locations in Lac du Sauvage (Map 8F2.2-1); LDS-P1, LDS-P2, and LDS-P3 are the primary locations used in the water quality assessment (Map 8F2.2-1).

Figure 8F4-3 Predicted Nitrate Concentrations in Lac du Sauvage



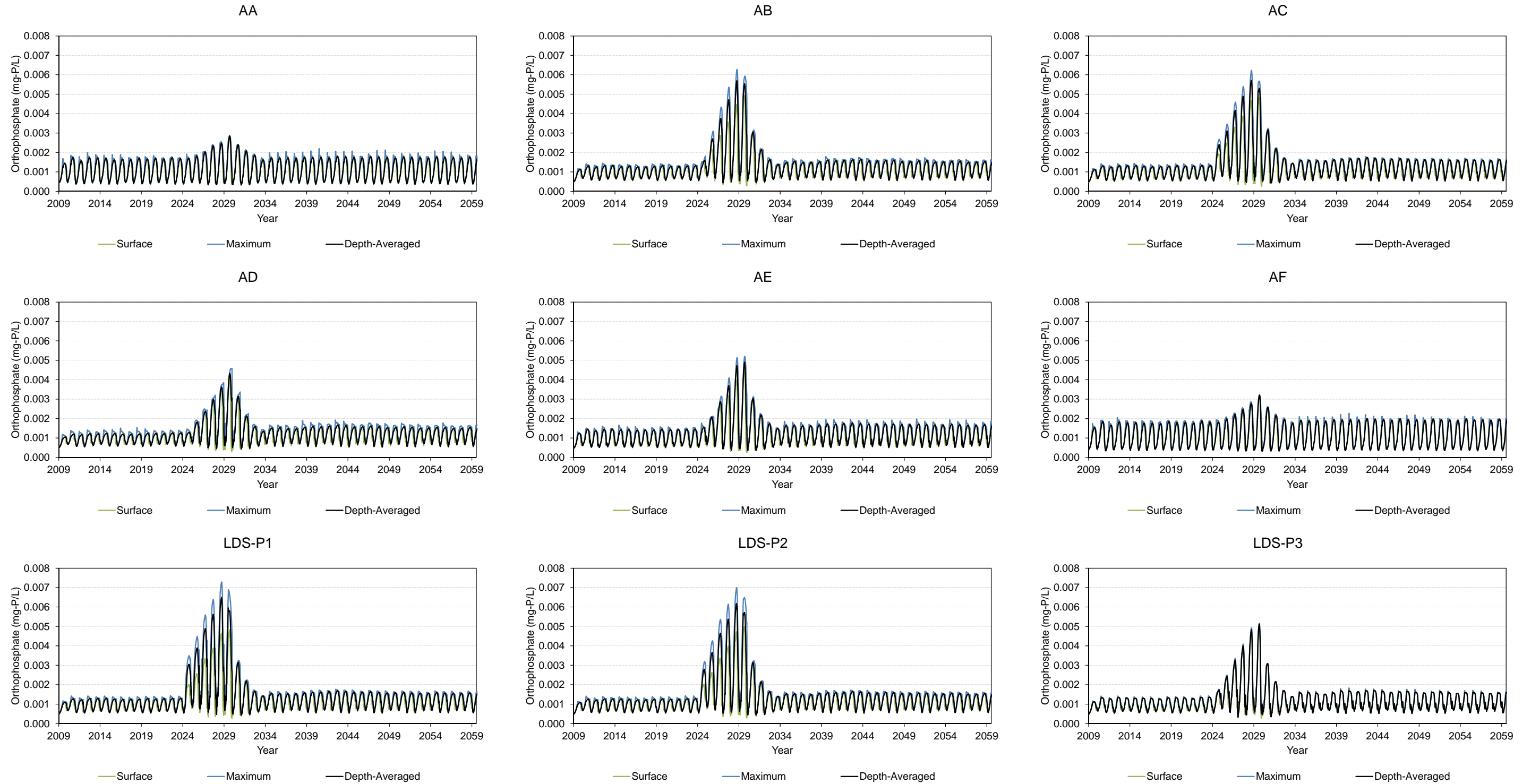
mg N/L = milligrams nitrogen per litre; AA, AB, AC, AD, AE, and AF are calibration locations in Lac du Sauvage (Map 8F2.2-1); LDS-P1, LDS-P2, and LDS-P3 are the primary locations used in the water quality assessment (Map 8F2.2-1).

Figure 8F4-4 Predicted Total Nitrogen Concentrations in Lac du Sauvage



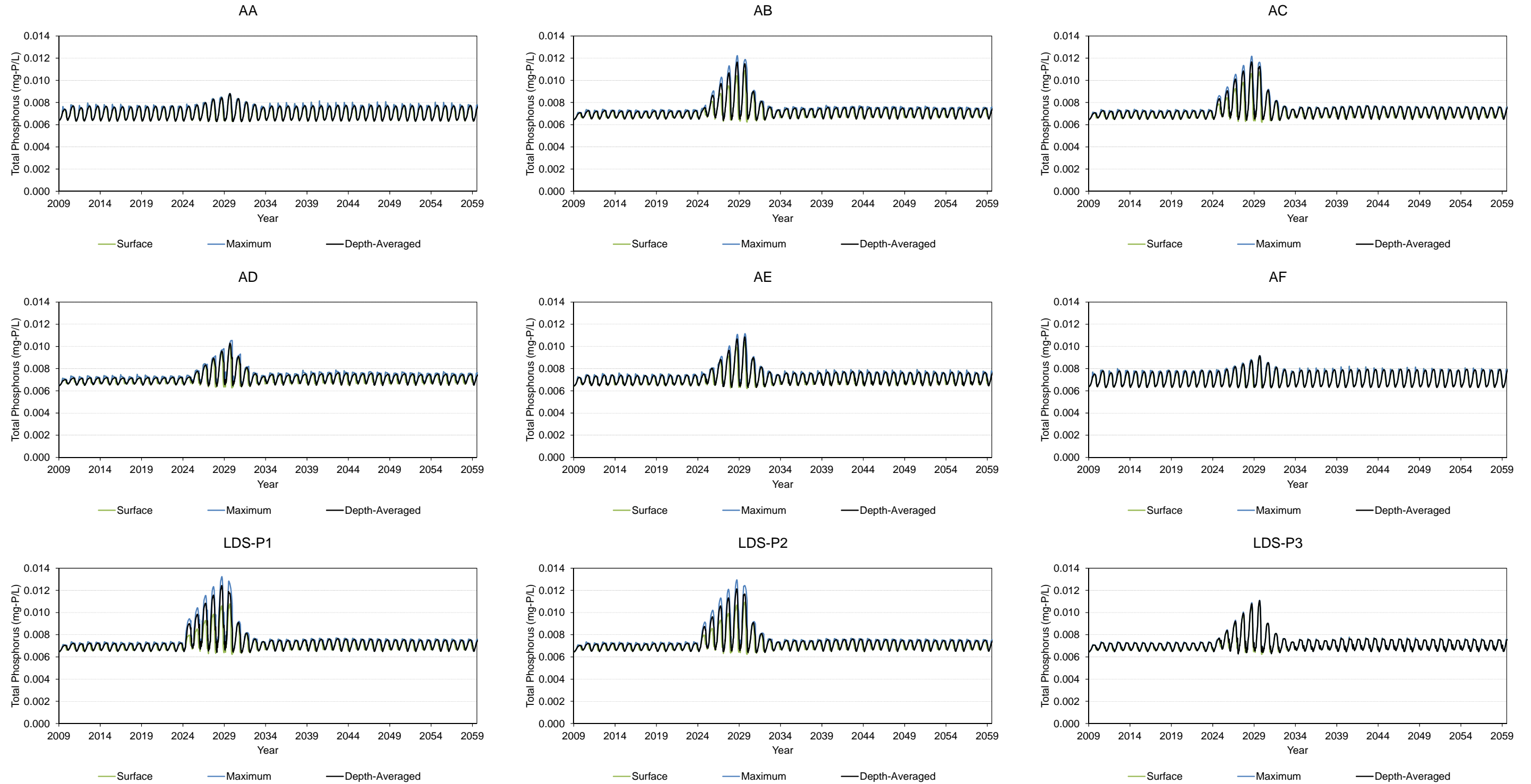
mg N/L = milligrams nitrogen per litre; AA, AB, AC, AD, AE, and AF are calibration locations in Lac du Sauvage (Map 8F2.2-1); LDS-P1, LDS-P2, and LDS-P3 are the primary locations used in the water quality assessment (Map 8F2.2-1).

Figure 8F4-5 Predicted Orthophosphate Concentrations in Lac du Sauvage



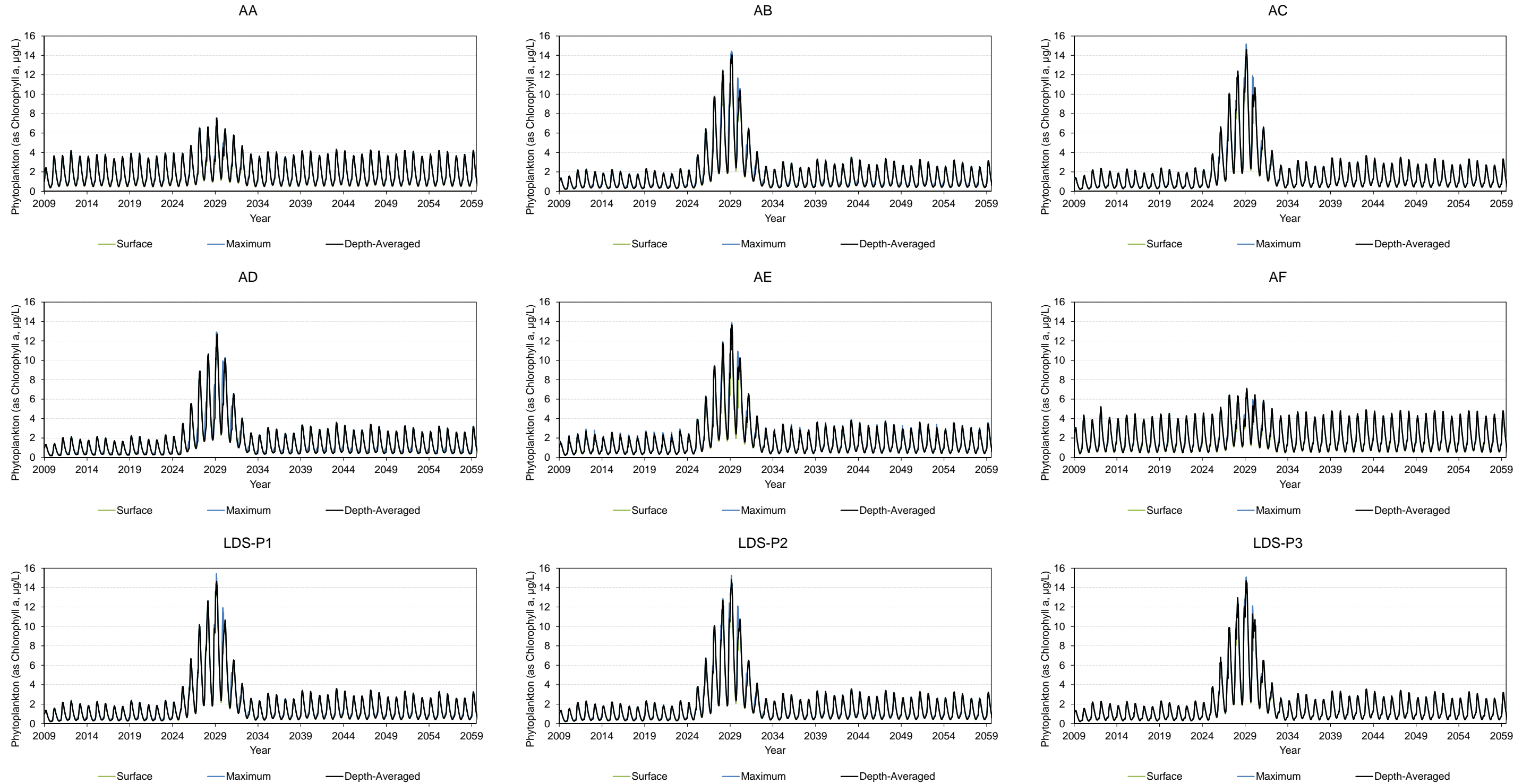
mg P/L = milligrams phosphorus per litre; AA, AB, AC, AD, AE, and AF are calibration locations in Lac du Sauvage (Map 8F2.2-1); LDS-P1, LDS-P2, and LDS-P3 are the primary locations used in the water quality assessment (Map 8F2.2-1).

Figure 8F4-6 Predicted Total Phosphorus Concentrations in Lac du Sauvage



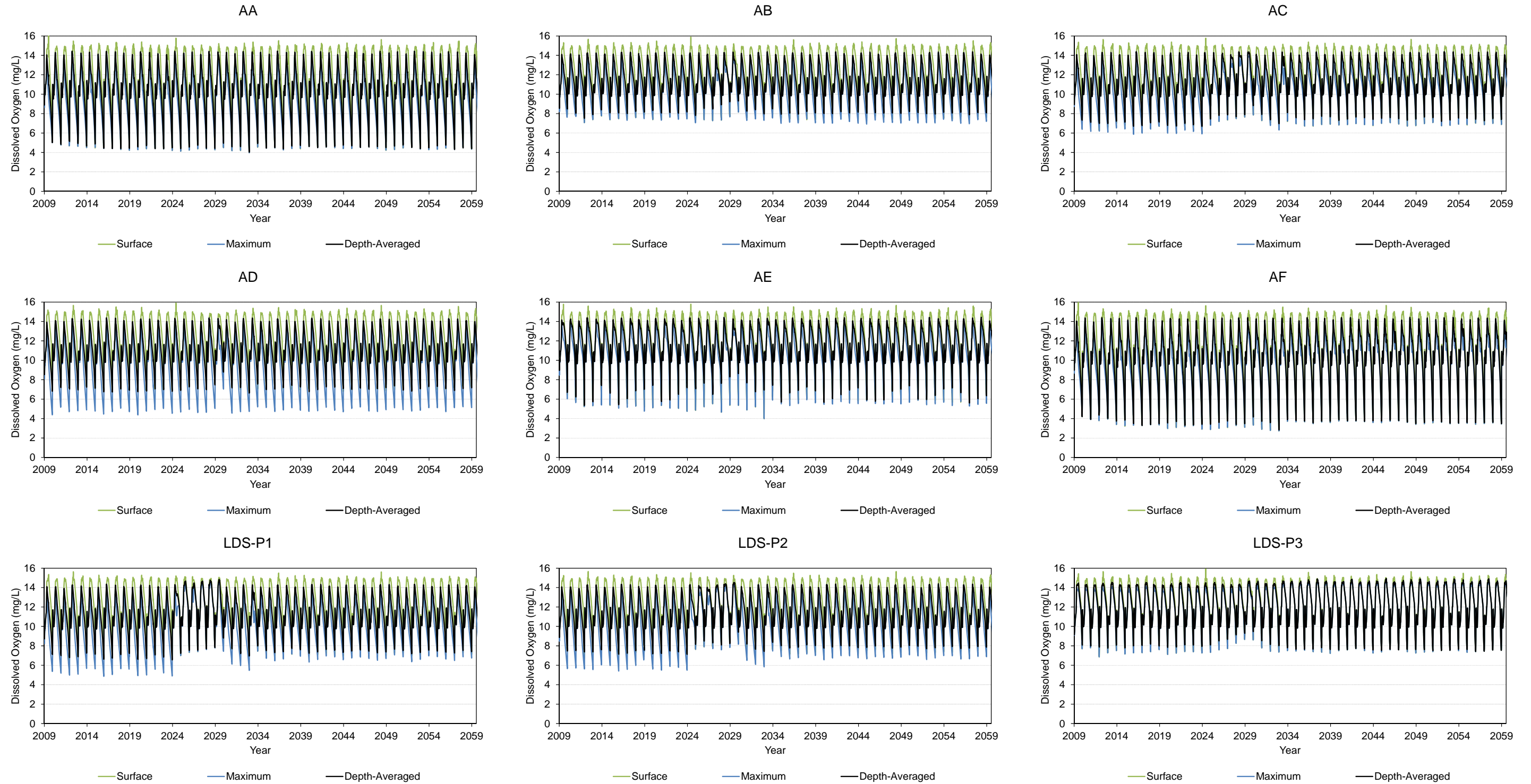
mg P/L = milligrams phosphorus per litre; AA, AB, AC, AD, AE, and AF are calibration locations in Lac du Sauvage (Map 8F2.2-1); LDS-P1, LDS-P2, and LDS-P3 are the primary locations used in the water quality assessment (Map 8F2.2-1).

Figure 8F4-7 Predicted Phytoplankton (as Chlorophyll a) Concentrations in Lac du Sauvage



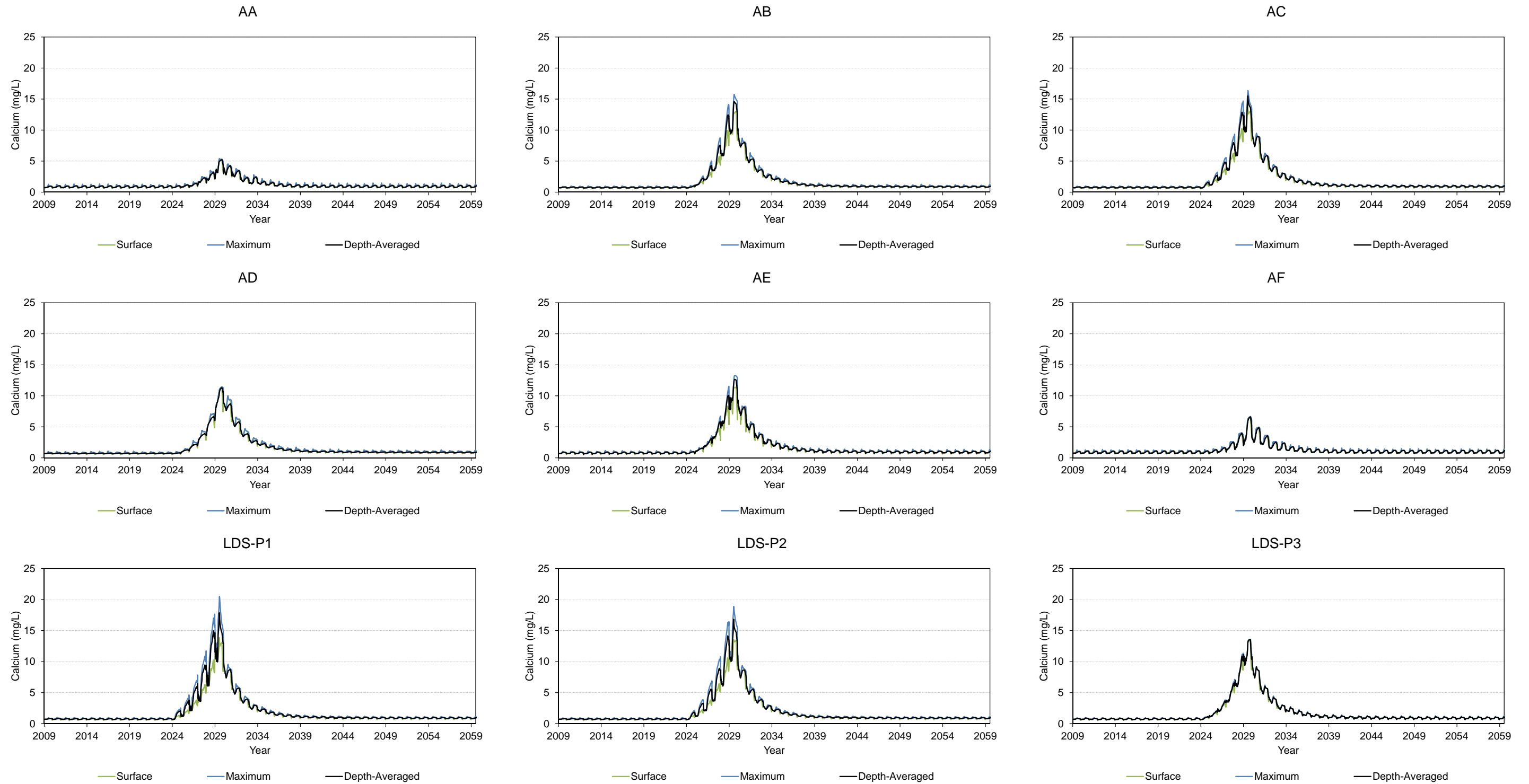
µg/L = micrograms per litre; AA, AB, AC, AD, AE, and AF are calibration locations in Lac du Sauvage (Map 8F2.2-1); LDS-P1, LDS-P2, and LDS-P3 are the primary locations used in the water quality assessment (Map 8F2.2-1).

Figure 8F4-8 Predicted Dissolved Oxygen Concentrations in Lac du Sauvage



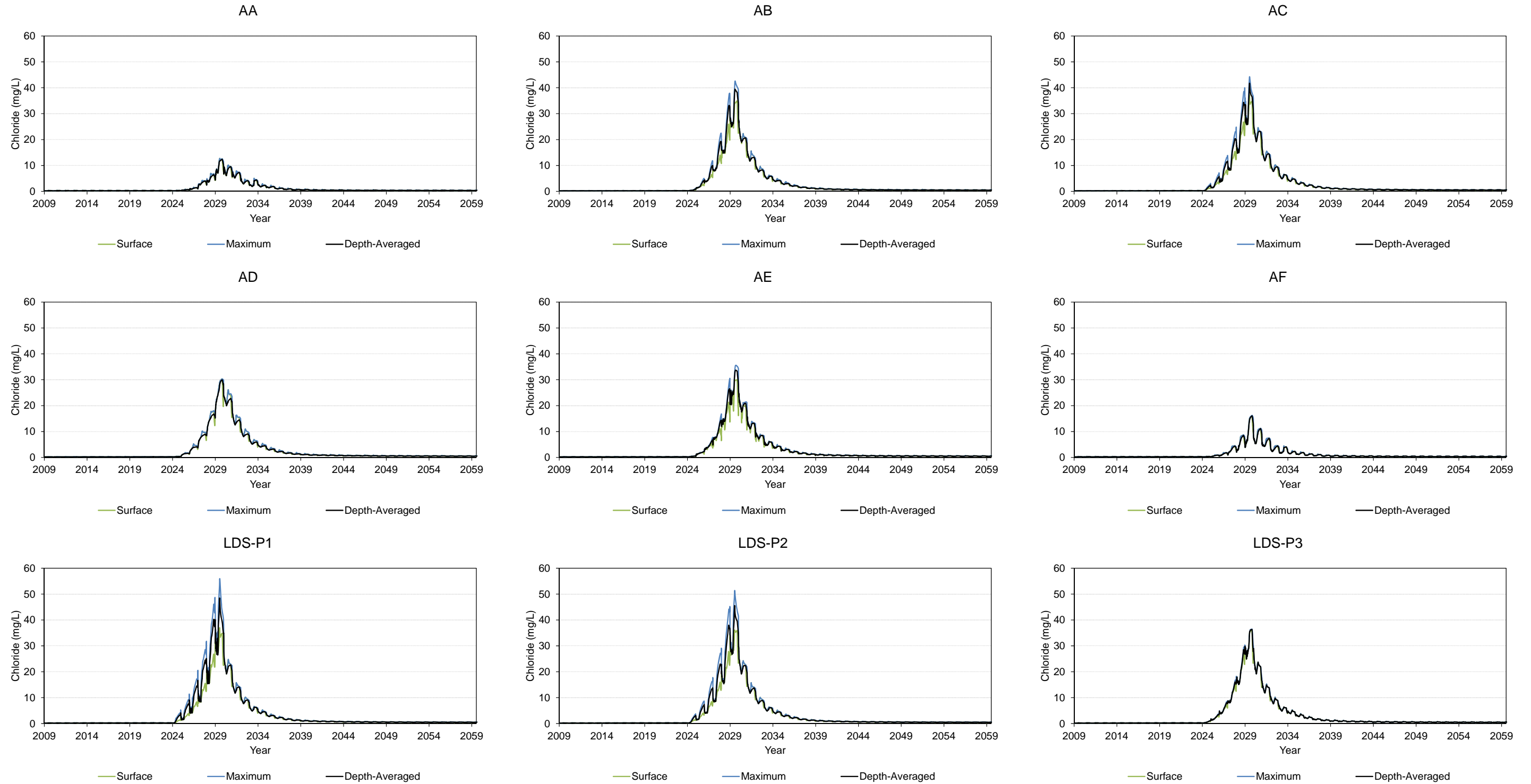
mg/L = milligrams per litre; AA, AB, AC, AD, AE, and AF are calibration locations in Lac du Sauvage (Map 8F2.2-1); LDS-P1, LDS-P2, and LDS-P3 are the primary locations used in the water quality assessment (Map 8F2.2-1).

Figure 8F4-9 Predicted Calcium Concentrations in Lac du Sauvage



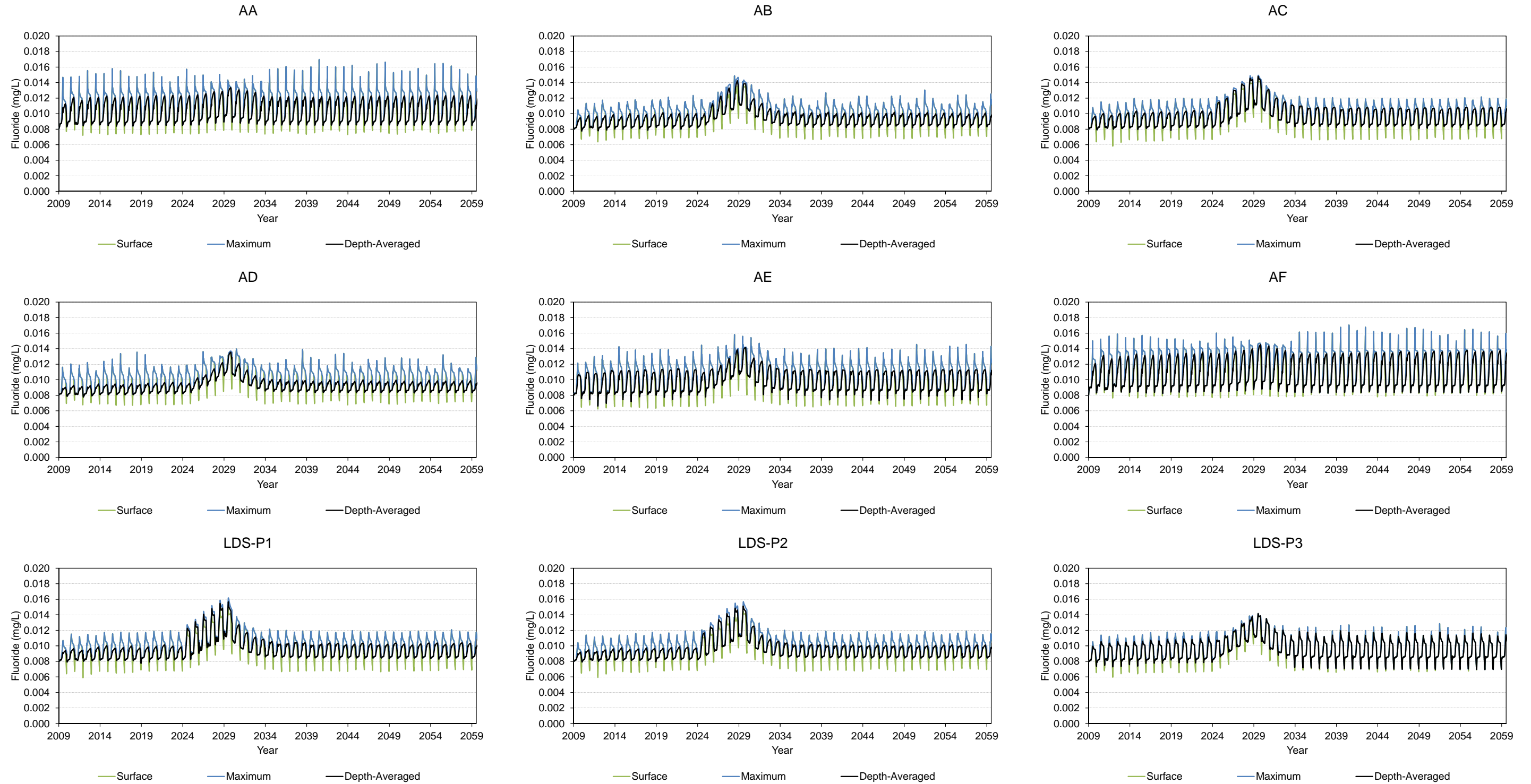
mg/L = milligrams per litre; AA, AB, AC, AD, AE, and AF are calibration locations in Lac du Sauvage (Map 8F2.2-1); LDS-P1, LDS-P2, and LDS-P3 are the primary locations used in the water quality assessment (Map 8F2.2-1).

Figure 8F4-10 Predicted Chloride Concentrations in Lac du Sauvage



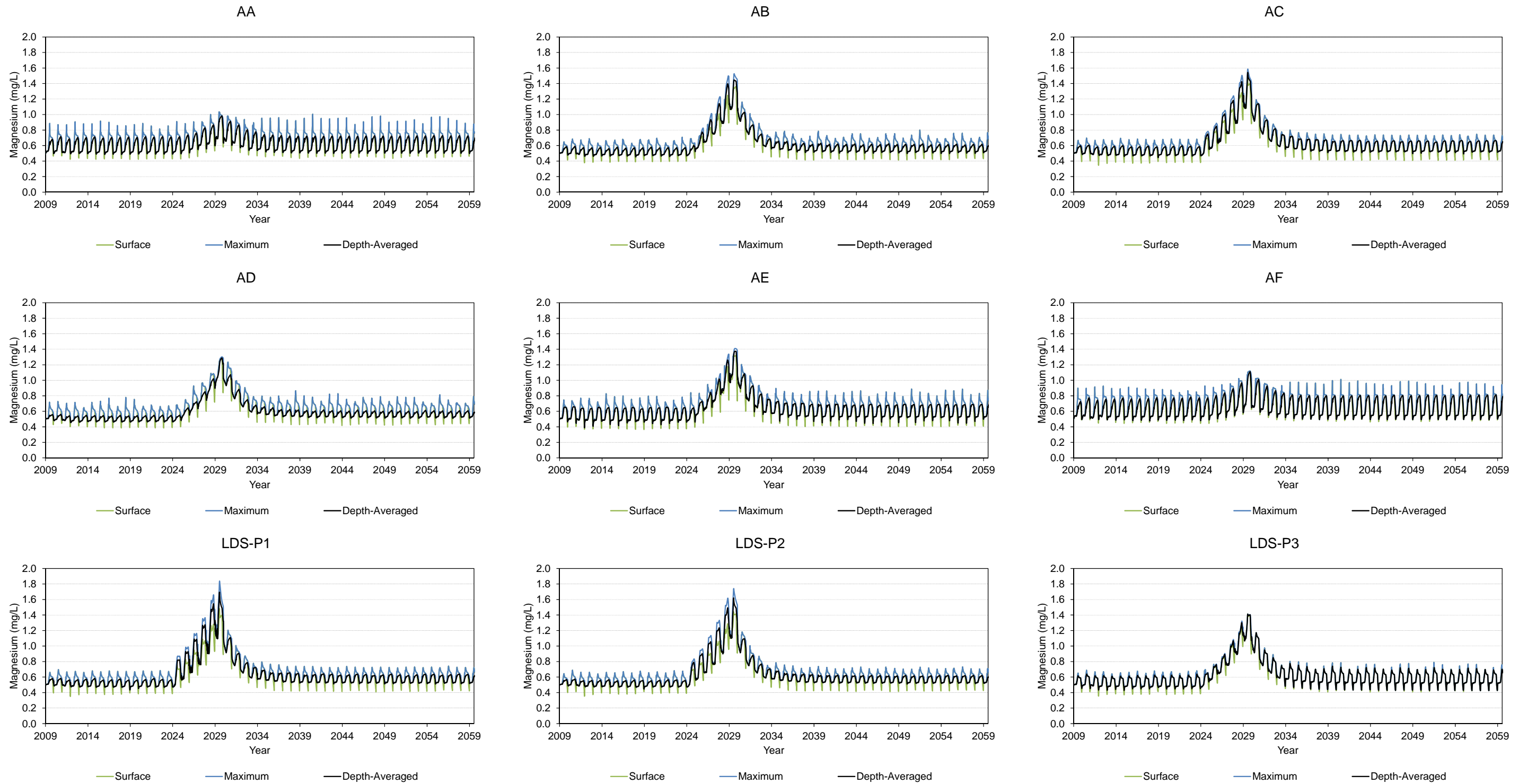
mg/L = milligrams per litre; AA, AB, AC, AD, AE, and AF are calibration locations in Lac du Sauvage (Map 8F2.2-1); LDS-P1, LDS-P2, and LDS-P3 are the primary locations used in the water quality assessment (Map 8F2.2-1).

Figure 8F4-11 Predicted Fluoride Concentrations in Lac du Sauvage



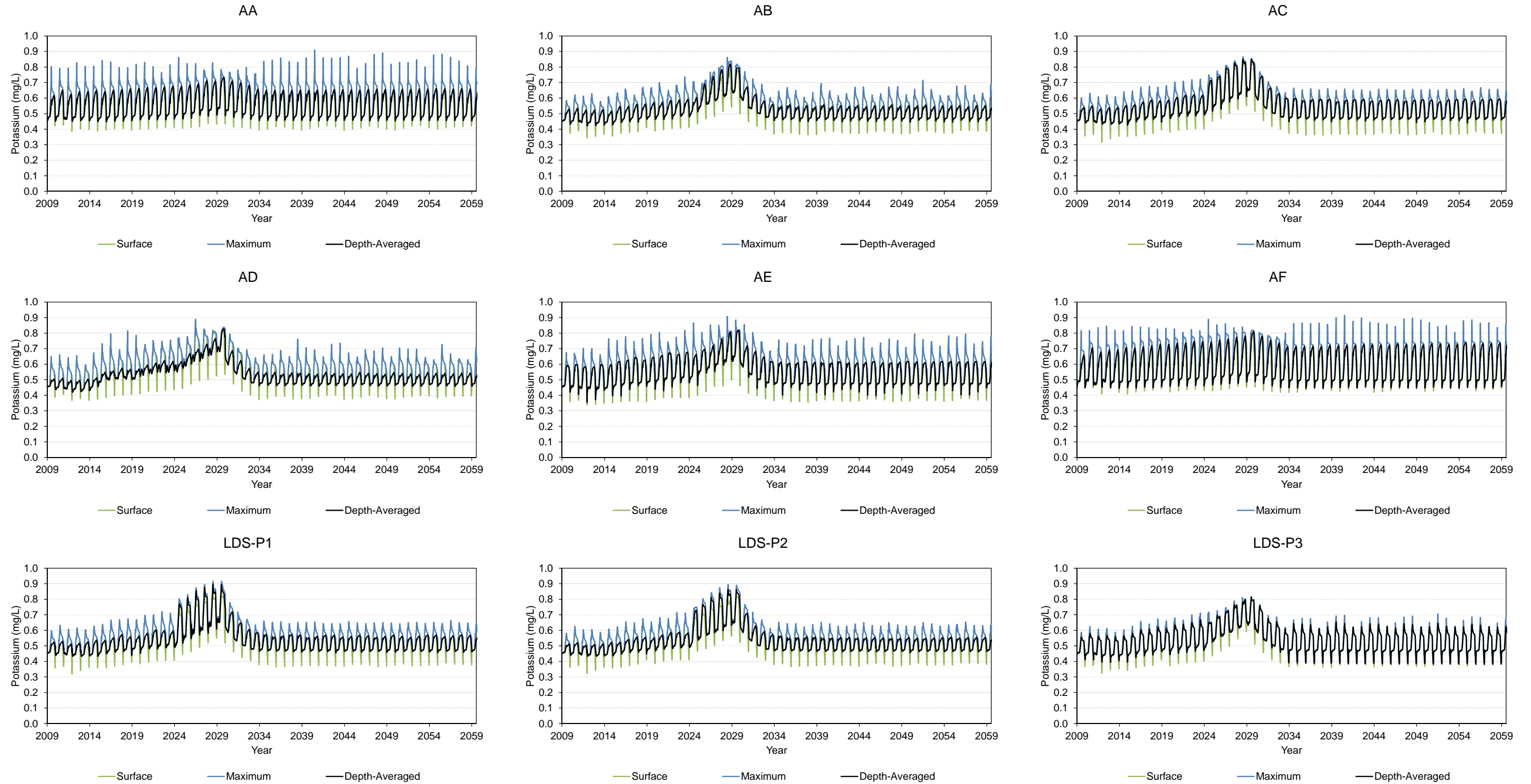
mg/L = milligrams per litre; AA, AB, AC, AD, AE, and AF are calibration locations in Lac du Sauvage (Map 8F2.2-1); LDS-P1, LDS-P2, and LDS-P3 are the primary locations used in the water quality assessment (Map 8F2.2-1).

Figure 8F4-12 Predicted Magnesium Concentrations in Lac du Sauvage



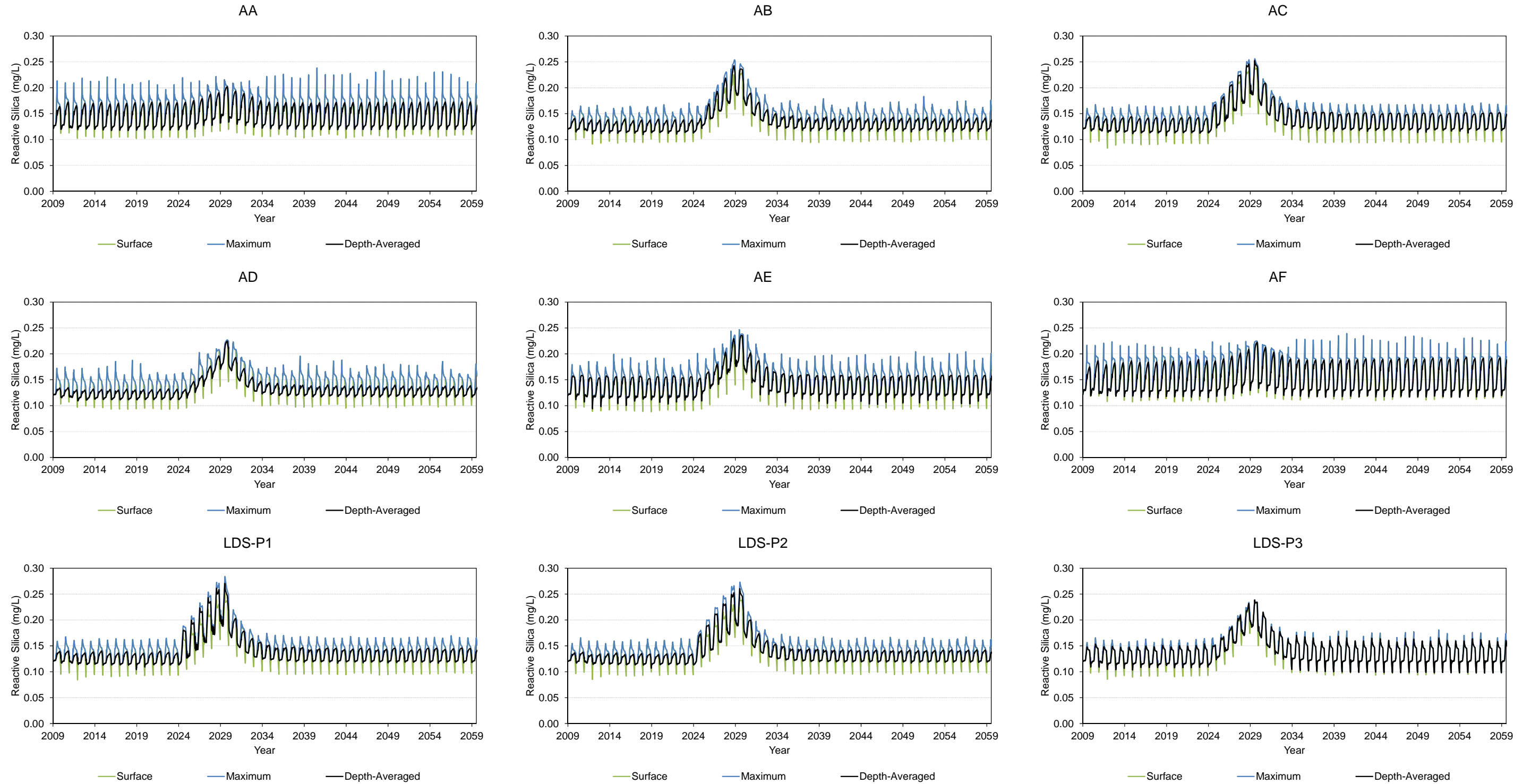
mg/L = milligrams per litre; AA, AB, AC, AD, AE, and AF are calibration locations in Lac du Sauvage (Map 8F2.2-1); LDS-P1, LDS-P2, and LDS-P3 are the primary locations used in the water quality assessment (Map 8F2.2-1).

Figure 8F4-13 Predicted Potassium Concentrations in Lac du Sauvage



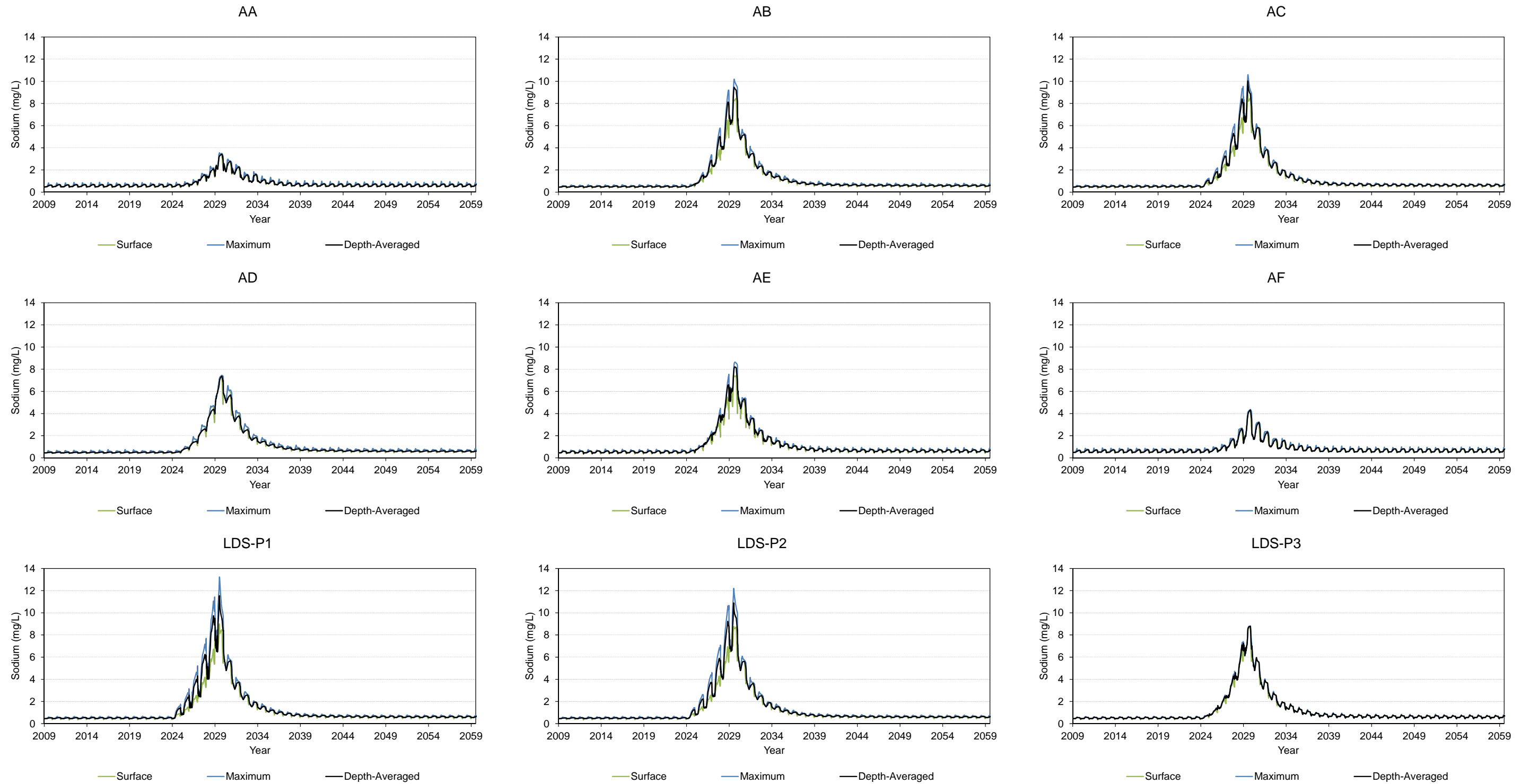
mg/L = milligrams per litre; AA, AB, AC, AD, AE, and AF are calibration locations in Lac du Sauvage (Map 8F2.2-1); LDS-P1, LDS-P2, and LDS-P3 are the primary locations used in the water quality assessment (Map 8F2.2-1).

Figure 8F4-14 Predicted Reactive Silica Concentrations in Lac du Sauvage



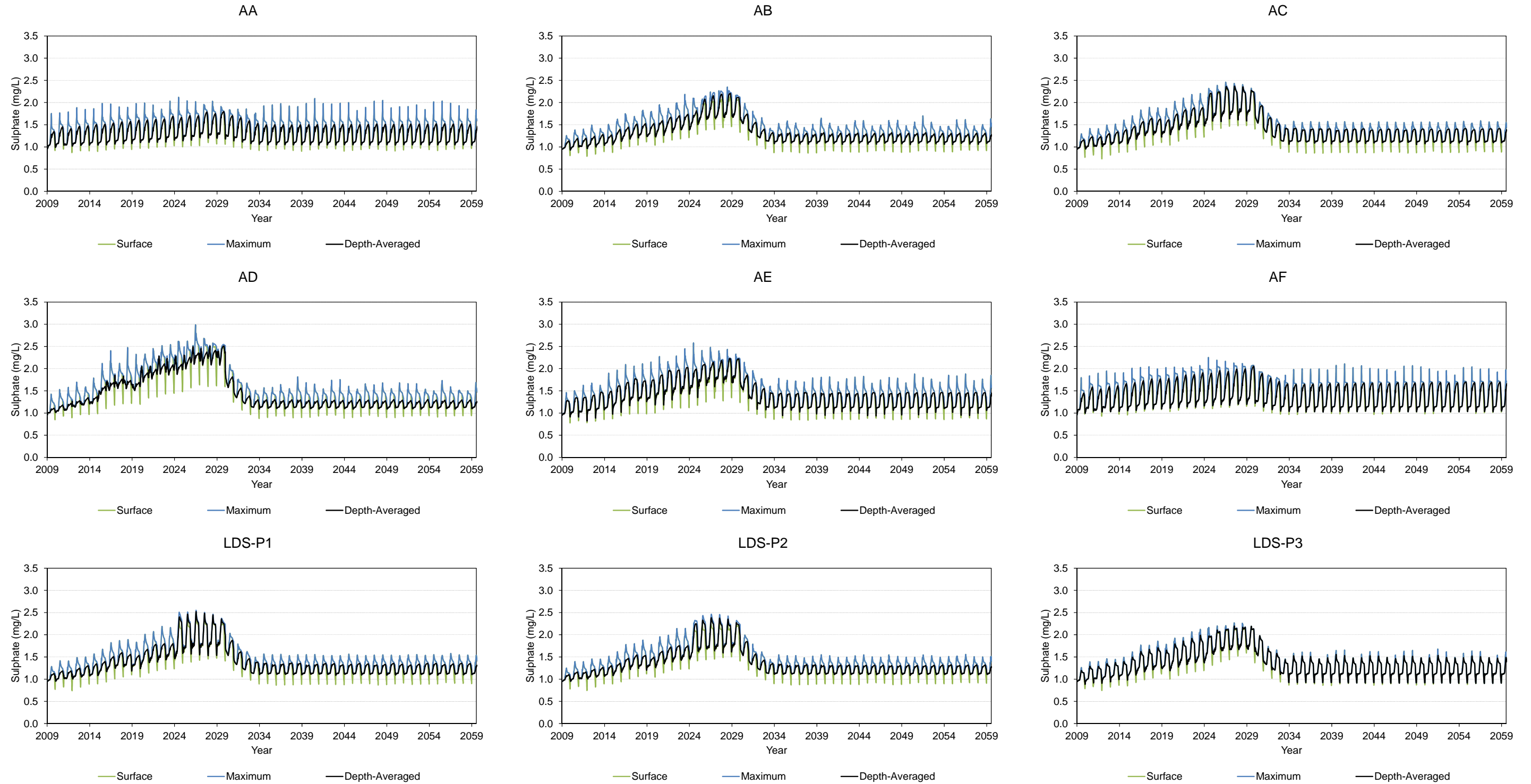
mg/L = milligrams per litre; AA, AB, AC, AD, AE, and AF are calibration locations in Lac du Sauvage (Map 8F2.2-1); LDS-P1, LDS-P2, and LDS-P3 are the primary locations used in the water quality assessment (Map 8F2.2-1).

Figure 8F4-15 Predicted Sodium Concentrations in Lac du Sauvage



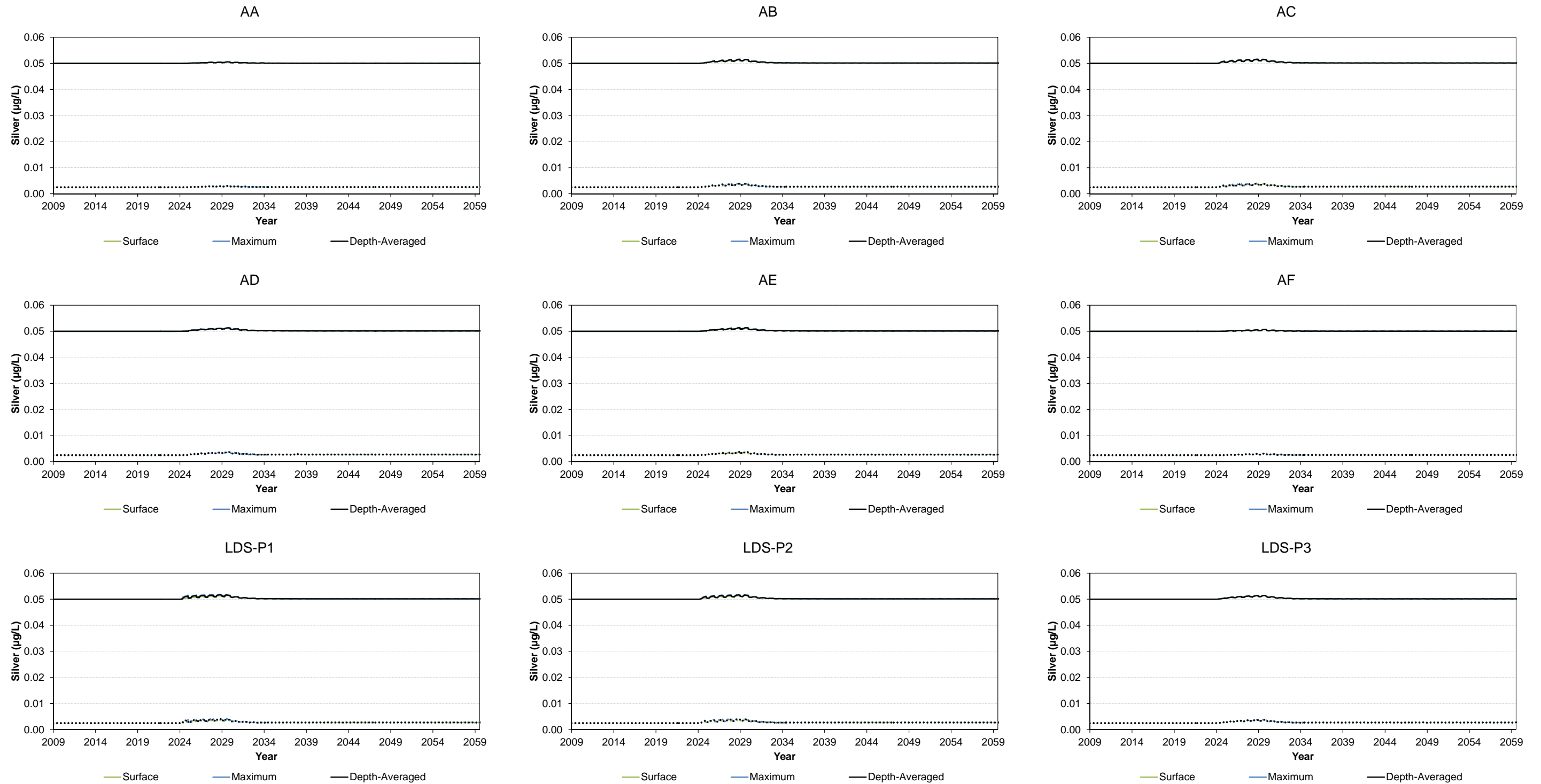
mg/L = milligrams per litre; AA, AB, AC, AD, AE, and AF are calibration locations in Lac du Sauvage (Map 8F2.2-1); LDS-P1, LDS-P2, and LDS-P3 are the primary locations used in the water quality assessment (Map 8F2.2-1).

Figure 8F4-16 Predicted Sulphate Concentrations in Lac du Sauvage



mg/L = milligrams per litre; AA, AB, AC, AD, AE, and AF are calibration locations in Lac du Sauvage (Map 8F2.2-1); LDS-P1, LDS-P2, and LDS-P3 are the primary locations used in the water quality assessment (Map 8F2.2-1).

Figure 8F4-17 Predicted Total and Dissolved Silver Concentrations in Lac du Sauvage



µg/L = micrograms per litre; solid lines represent total metals; dotted lines represent dissolved metals; AA, AB, AC, AD, AE, and AF are calibration locations in Lac du Sauvage (Map 8F2.2-1); LDS-P1, LDS-P2, and LDS-P3 are the primary locations used in the water quality assessment (Map 8F2.2-1).