

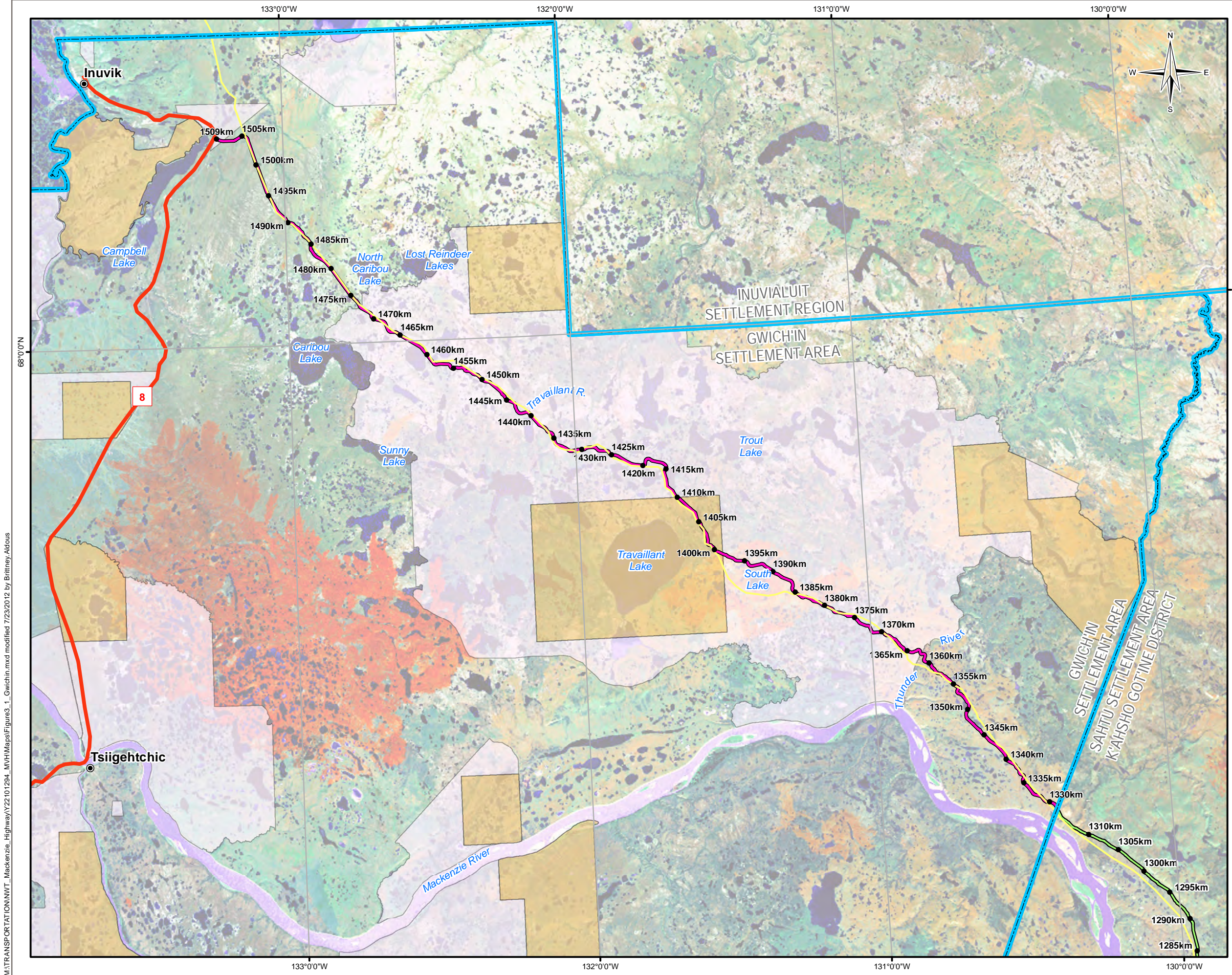
Mackenzie Valley Highway Extension

Mackenzie Valley Highway Extension

Base Data provided by Government of Canada; Private Land data provided by the Joint Secretariat

PREPARED BY	
PREPARED FOR	
FIGURE NO.	1-1

DATA SOURCE: AUGUST 2013 BY: JPH/PH



LEGEND

- Communities
- KM Post
- MVH Concept - December 2010
- MVH Concept (K'ahsho Got'ine) - AMEC
- Dempster Highway (NWT HWY 8)
- Mackenzie Gas Project Corridor
- Settlement Area Boundary

Gwich'in Lands

- Surface and Subsurface Rights
- Surface Rights

NOTES
 Base data source: ESRI Base Data
 NTS 1:250,000
 Alignment is considered preliminary and is subject to change

STATUS
 ISSUED FOR USE

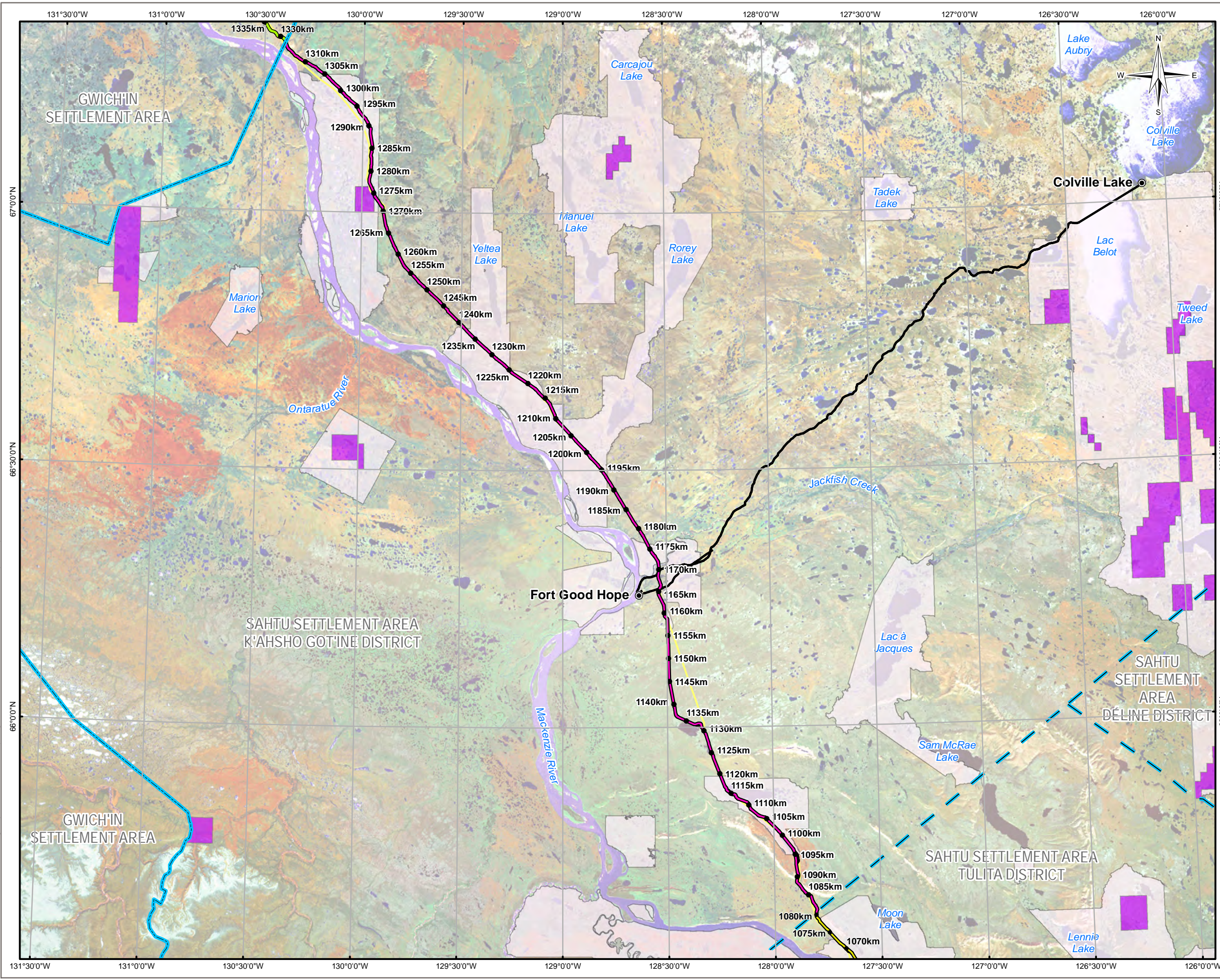
MACKENZIE VALLEY HIGHWAY

Gwich'in Settlement Area

PROJECTION UTM Zone 8	DATUM NAD83
Scale: 1:550,000	
FILE NO. Figure3_1_Gwichin.mxd	
PROJECT NO. Y22101294	DWN BA
	CKD MS
	APVD RM
	REV 0
OFFICE EBA-RIV	DATE July 2012

Figure 3-1

M:\TRANSPORTATION\NWT_Mackenzie_Highway\Y22101294_MVH\Maps\Figures3_1_Gwichin.mxd modified 7/23/2012 by Britney Aldous



LEGEND

- Communities
- KM Post
- MVH Concept - AMEC
- MVH Concept (Tulita) - EBA June 2011
- MVH Concept (GSA) - EBA December 2010
- Public Winter Road
- Mackenzie Gas Project Corridor
- Settlement Area Boundary
- District Boundary

Sahtu Settlement Lands

- Subsurface Rights
- Surface Rights

NOTES
 Base Data Source: ESRI
 Sahtu Settlement Lands: SLUPB
 Alignment is considered preliminary and is subject to change

STATUS
 ISSUED FOR USE

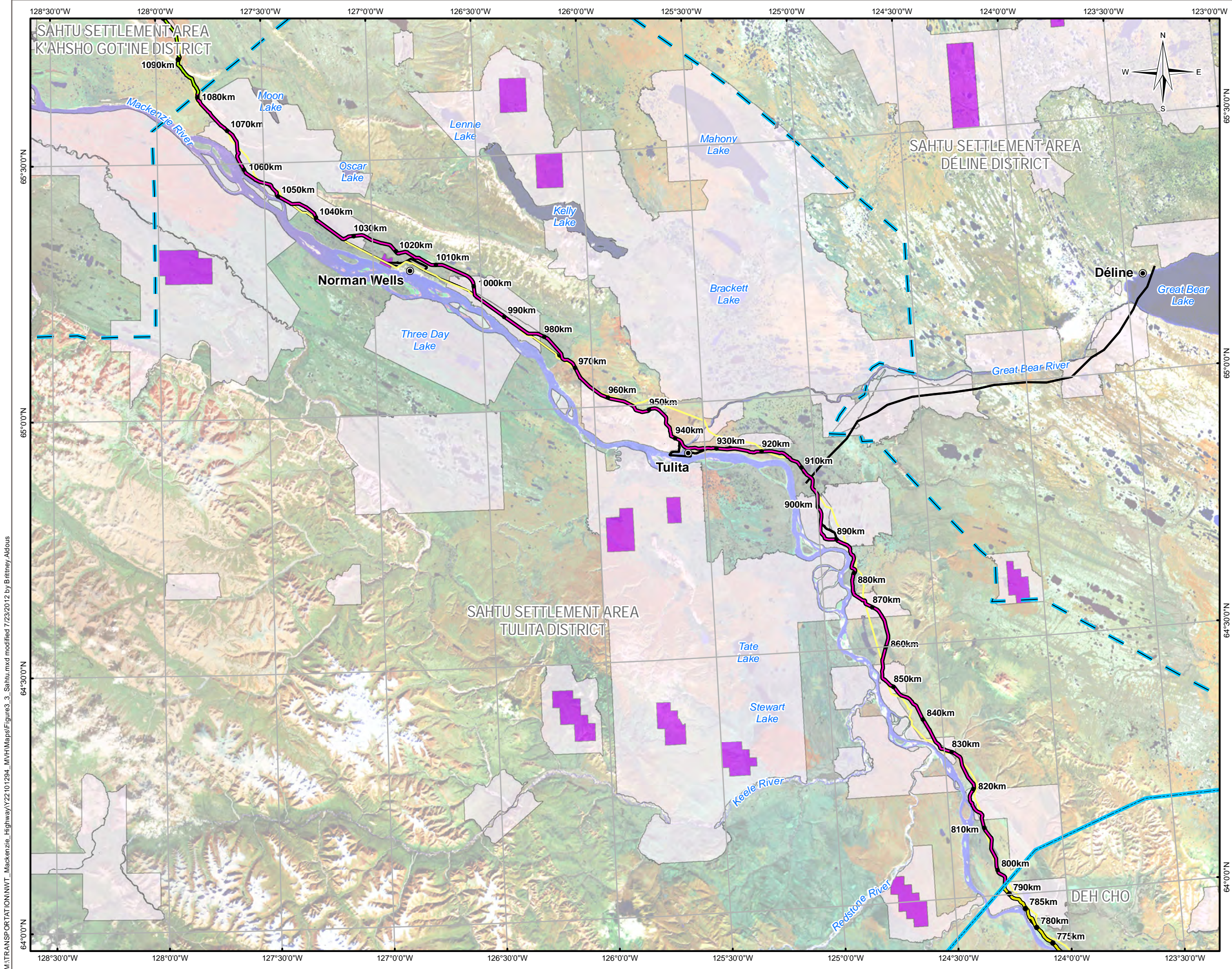
MACKENZIE VALLEY HIGHWAY

Sahtu Settlement Area K'ahsho Got'ine District

PROJECTION UTM Zone 9	DATUM NAD83			
Scale: 1:800,000 				
FILE NO. Figure3_2_KahshoGotine.mxd				
PROJECT NO. Y22101294	DWN BA	CKD MS	APVD RM	REV 0
OFFICE EBA-RIV	DATE July 2012			

Figure 3-2

M:\TRANSPORTATION\NWT_Mackenzie_Highway\Y22101294_MVH\Maps\Figures3_2_KahshoGotine.mxd modified 7/23/2012 by BrittneyAldous



LEGEND

- Communities
- KM Marker
- MVH Concept - EBA June 2011 (Preferred Alignment)
- MVH Concept (Deh Cho) - Dessau November 2011
- Public Winter Road
- Mackenzie Gas Project Corridor
- Settlement Area Boundary
- District Boundary

Sahtu Settlement Lands

- Subsurface Rights
- Surface Rights

NOTES
 Base Data Source: ESRI
 Sahtu Settlement Lands: SLUPB
 Alignment is considered preliminary and is subject to change

STATUS
 ISSUED FOR USE

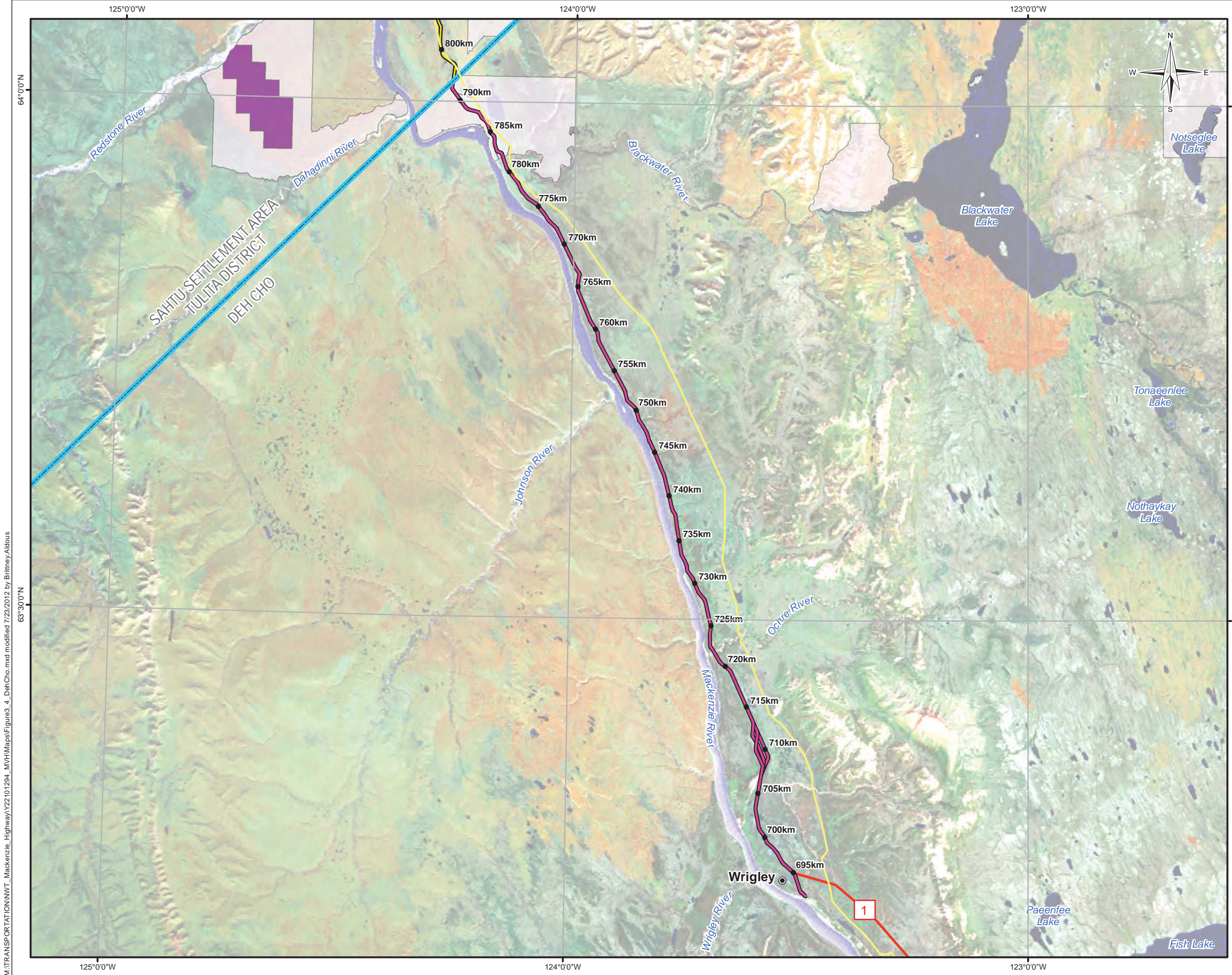
MACKENZIE VALLEY HIGHWAY

Sahtu Settlement Area Tulita District

PROJECTION UTM Zone 9	DATUM NAD83	Scale: 1:800,000 	5658 NWT Ltd. A TETRA TECH COMPANY	
FILE NO. Figure3_3_Sahtu.mxd				
PROJECT NO. Y22101294	DWN BA	CKD MS	APVD RM	REV 0
OFFICE EBA-RIV	DATE July 2012			

Figure 3-3

M:\TRANSPORTATION\NWT_Mackenzie_Highway\Y22101294_MVH\Maps\Figure3_3_Sahtu.mxd modified 7/25/2012 by Brittney_Aldous



LEGEND

- Community
- KM Post
- MVH Concept - Dessau November 2011
- MVH Concept (Tulita) - EBA June 2011
- Mackenzie Valley Highway (NWT HWY 1)
- Mackenzie Gas Project Corridor
- Settlement Area Boundary

Sahtu Settlement Lands

- Subsurface Rights
- Surface Rights

NOTES
 Base data source: ESRI Base Data
 NTS 1:250,000
 Alignment is considered preliminary and is subject to change

STATUS
 ISSUED FOR USE

MACKENZIE VALLEY HIGHWAY

Deh Cho

PROJECTION UTM Zone 10	DATUM NAD83	Scale: 1:400,000 		
FILE NO. Figure3_4_DeCho.mxd				
PROJECT NO. Y22101294	DWN BA	CKD MS	APVD RM	REV 0
OFFICE EBA-RIV	DATE July 2012			

Figure 3-4

M:\TRANSPORTATION\NWT_Mackenzie_Highway\Y22101294_MVH\Maps\Figure3_4_DeCho.mxd modified 7/25/2012 by Britney,Aldous