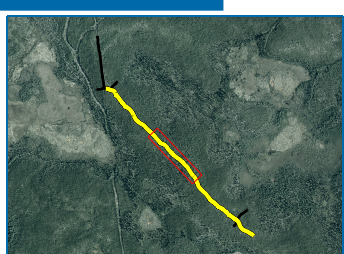
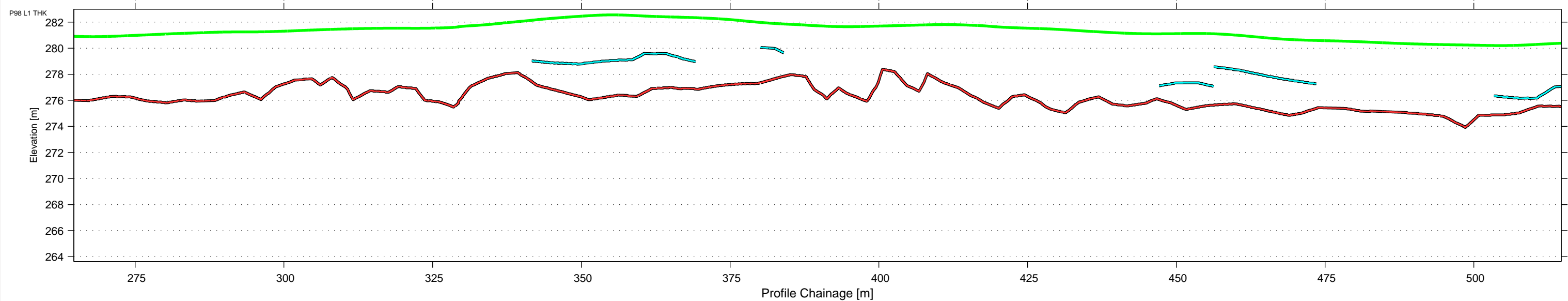
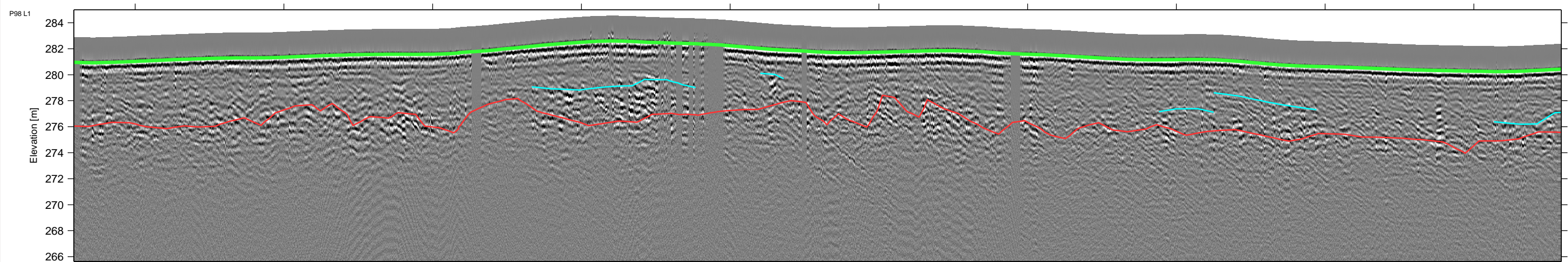


NAD83  
UTMz11  
XY: 1:656  
Z: 1:300.0  
VE: 2.19



**LEGEND**

- Plotted Data Collection Tracks
- Ground Surface
- Interpreted Bedrock Reflector
- - Interpreted Other Bedrock Reflector
- Interpreted Other Overburden Reflector

**BOREHOLE LEGEND**

- █ GRAVEL
- █ SAND
- █ SILT
- █ CLAY
- █ TOPSOIL
- █ BEDROCK
- █ PEAT

CLIENT

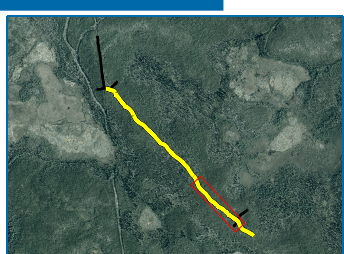
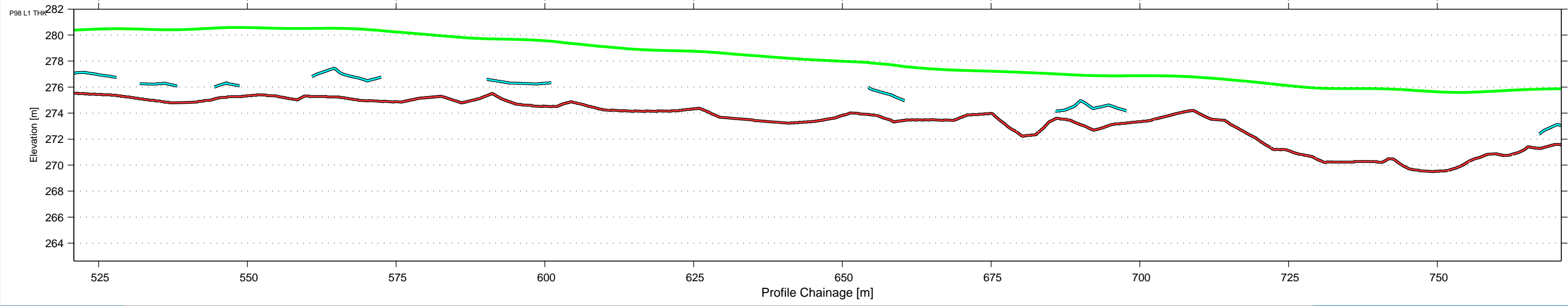
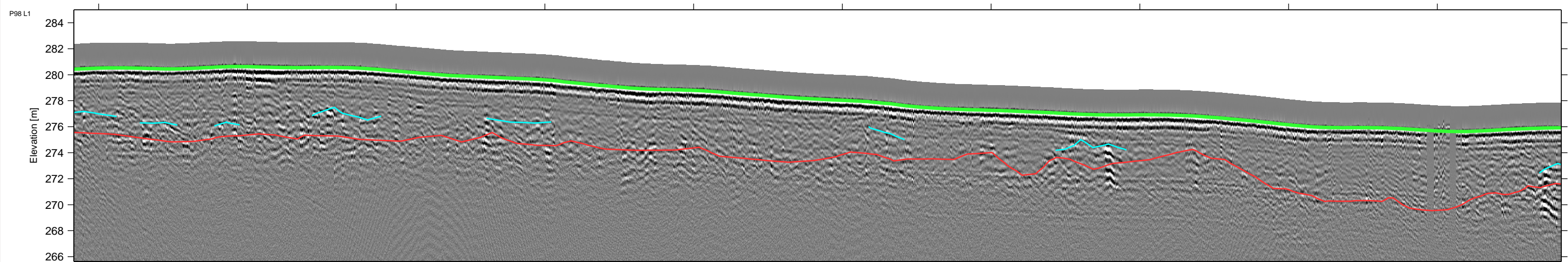
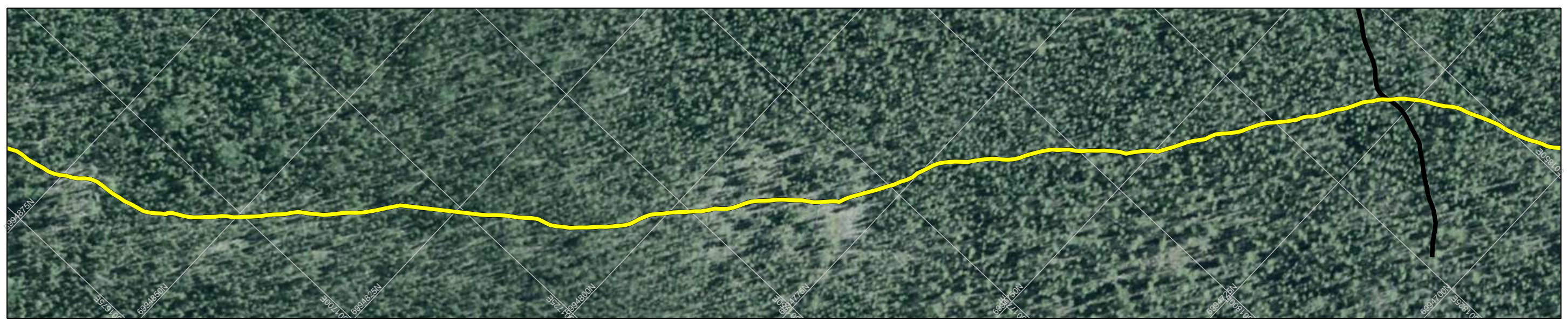


**2017 Geophysical Investigation  
TASR Granular**

**P98  
100 MHz GPR Data  
Line 1**

Project No. ENG.YARC03107-01	DWN JA	CHKD NSP	APVD NSP	REV 0	P98-L1-02.2
OFFICE Edmonton	DATE August 30, 2017				

NAD83  
UTMz11  
XY: 1:656  
Z: 1:300.0  
VE: 2.19



**LEGEND**

- Plotted Data Collection Tracks
- Ground Surface
- Interpreted Bedrock Reflector
- - - Interpreted Other Bedrock Reflector
- Interpreted Other Overburden Reflector

**BOREHOLE LEGEND**

- █ GRAVEL
- █ SAND
- █ SILT
- █ CLAY
- █ TOPSOIL
- █ BEDROCK
- █ PEAT

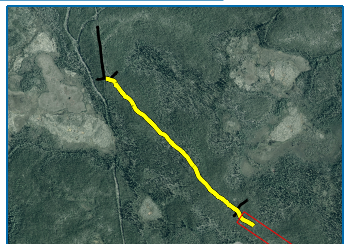
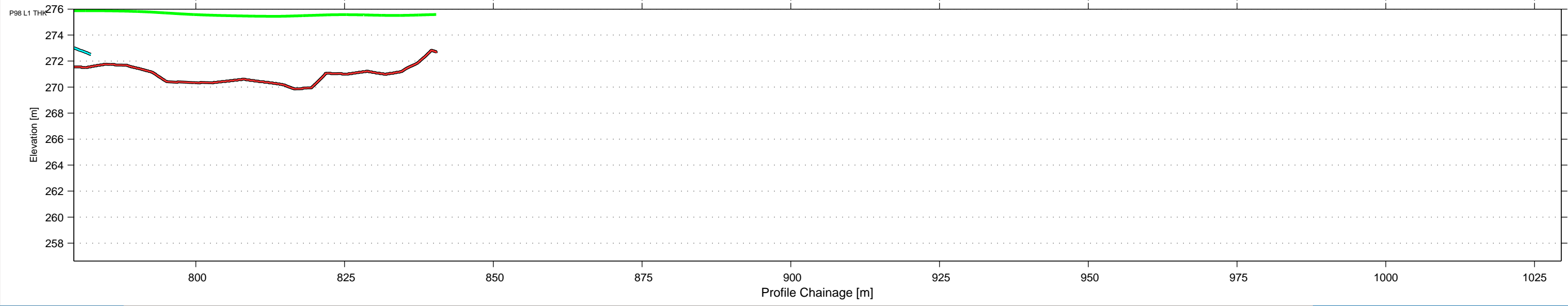
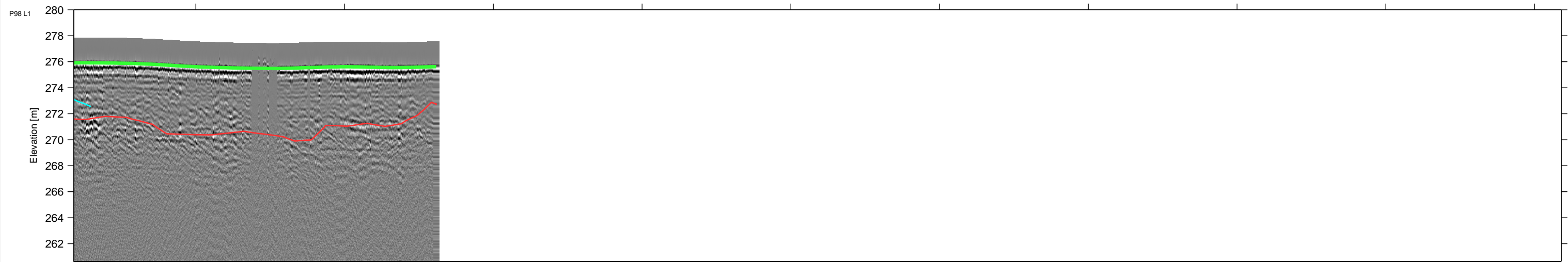
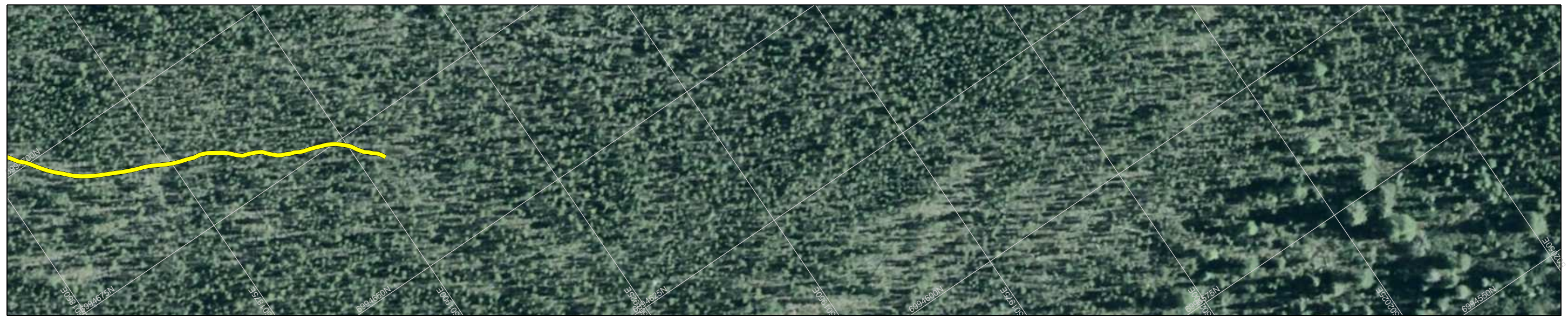
CLIENT



2017 Geophysical Investigation TASR Granular					
<b>P98</b>					
<b>100 MHz GPR Data Line 1</b>					
Project No. ENG.YARC03107-01	DWN JA	CHKD NSP	APVD NSP	REV 0	P98-L1-02.3
OFFICE Edmonton	DATE August 30, 2017				



NAD83  
UTMz11  
XY: 1:656  
Z: 1:300.0  
VE: 2.19



**LEGEND**

- Plotted Data Collection Tracks
- Ground Surface
- Interpreted Bedrock Reflector
- - Interpreted Other Bedrock Reflector
- Interpreted Other Overburden Reflector

**BOREHOLE LEGEND**

- █ GRAVEL
- █ SAND
- █ SILT
- █ CLAY
- █ TOPSOIL
- █ BEDROCK
- █ PEAT

CLIENT

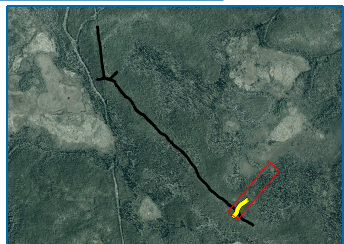
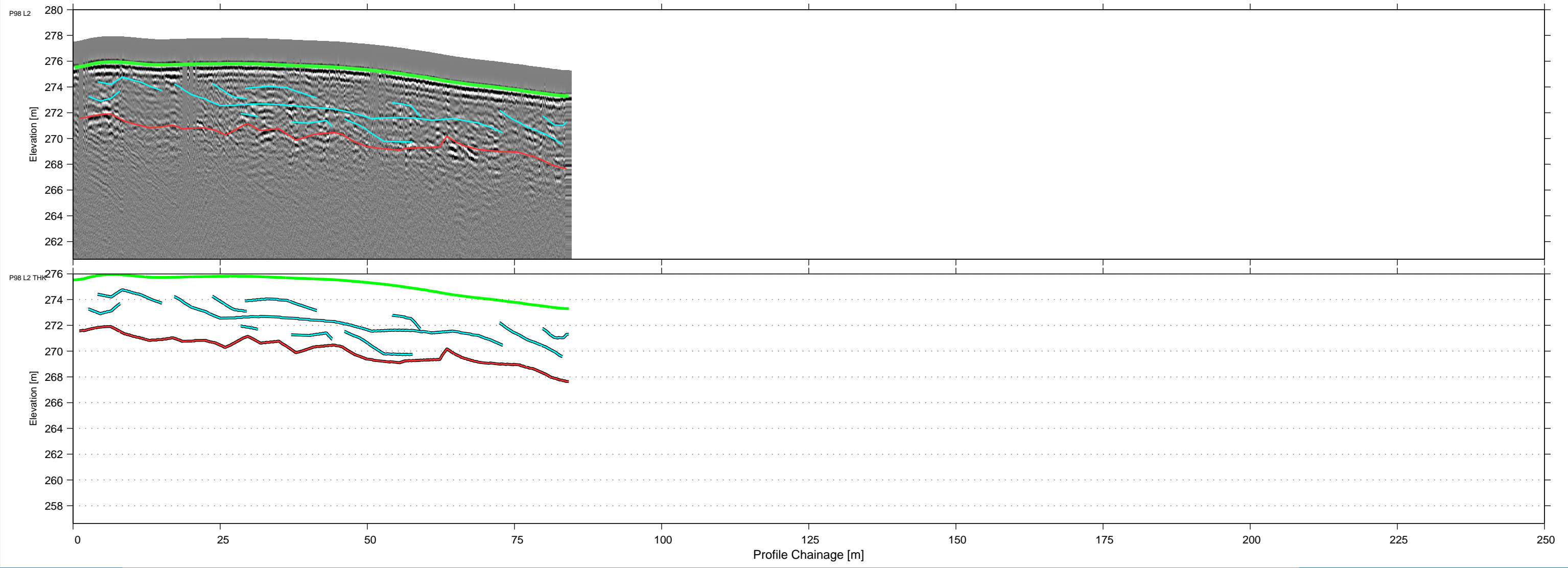


**2017 Geophysical Investigation  
TASR Granular**

**P98  
100 MHz GPR Data  
Line 1**

Project No. ENG.YARC03107-01	DWN JA	CHKD NSP	APVD NSP	REV 0	P98-L1-02.4
OFFICE Edmonton	DATE August 30, 2017				

NAD83  
UTMz11  
XY: 1:656  
Z: 1:300.0  
VE: 2.19



**LEGEND**

- Plotted Data Collection Tracks
- Ground Surface
- Interpreted Bedrock Reflector
- - - Interpreted Other Bedrock Reflector
- Interpreted Other Overburden Reflector

**BOREHOLE LEGEND**

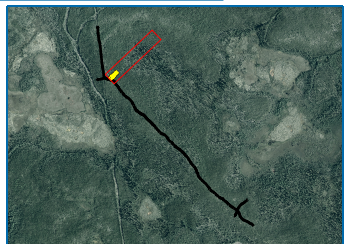
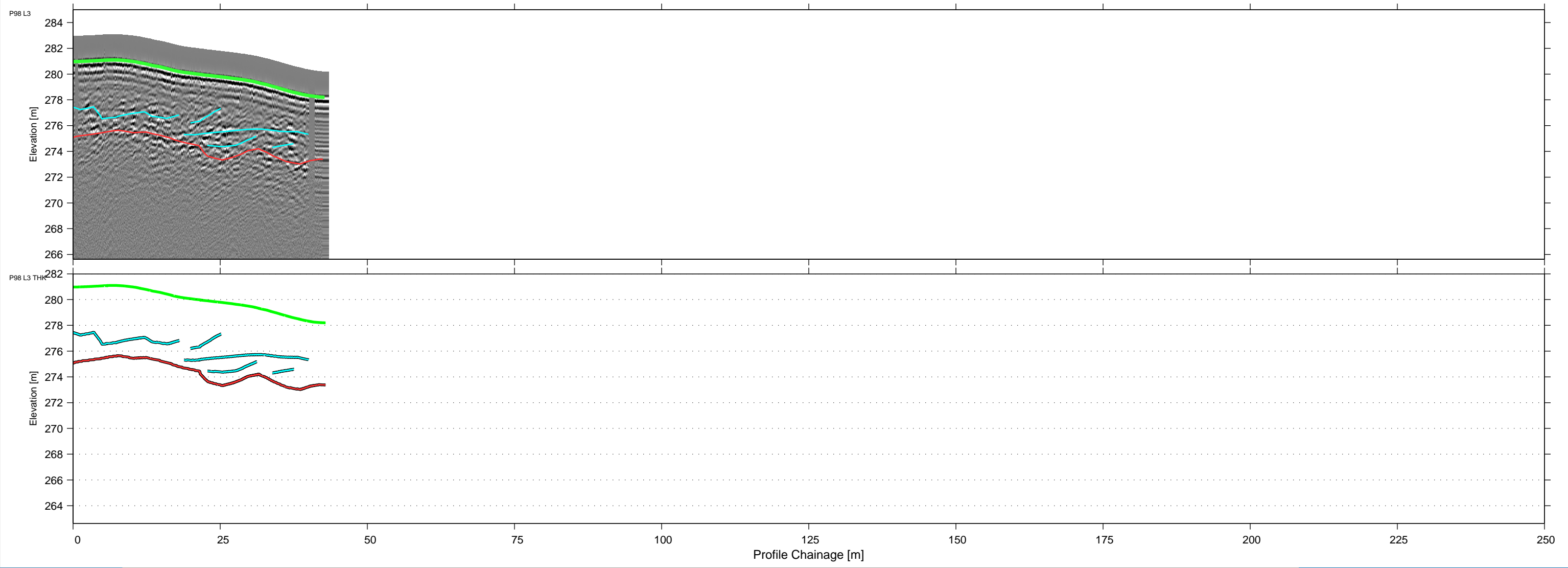
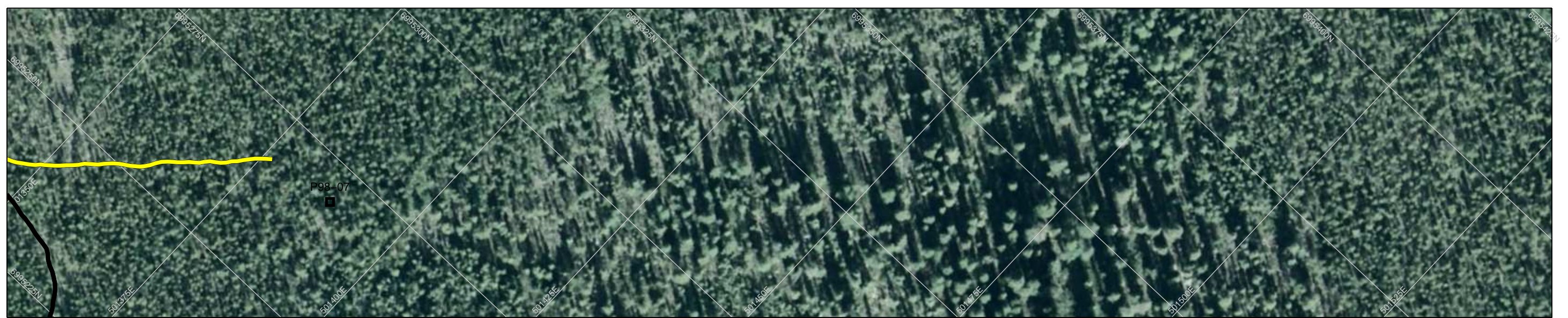
- █ GRAVEL
- █ SAND
- █ SILT
- █ CLAY
- █ TOPSOIL
- █ BEDROCK
- █ PEAT

CLIENT



2017 Geophysical Investigation TASR Granular					
<b>P98 100 MHz GPR Data Line 2</b>					
Project No. ENG.YARC03107-01	DWN JA	CHKD NSP	APVD NSP	REV 0	P98-L2.1
OFFICE Edmonton	DATE August 30, 2017				

NAD83  
UTMz11  
XY: 1:656  
Z: 1:300.0  
VE: 2.19



**LEGEND**

- Plotted Data Collection Tracks
- Ground Surface
- Interpreted Bedrock Reflector
- - Interpreted Other Bedrock Reflector
- Interpreted Other Overburden Reflector

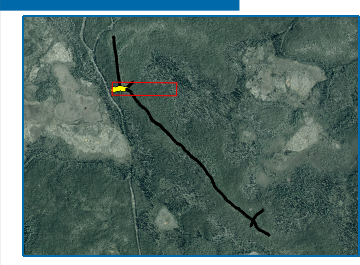
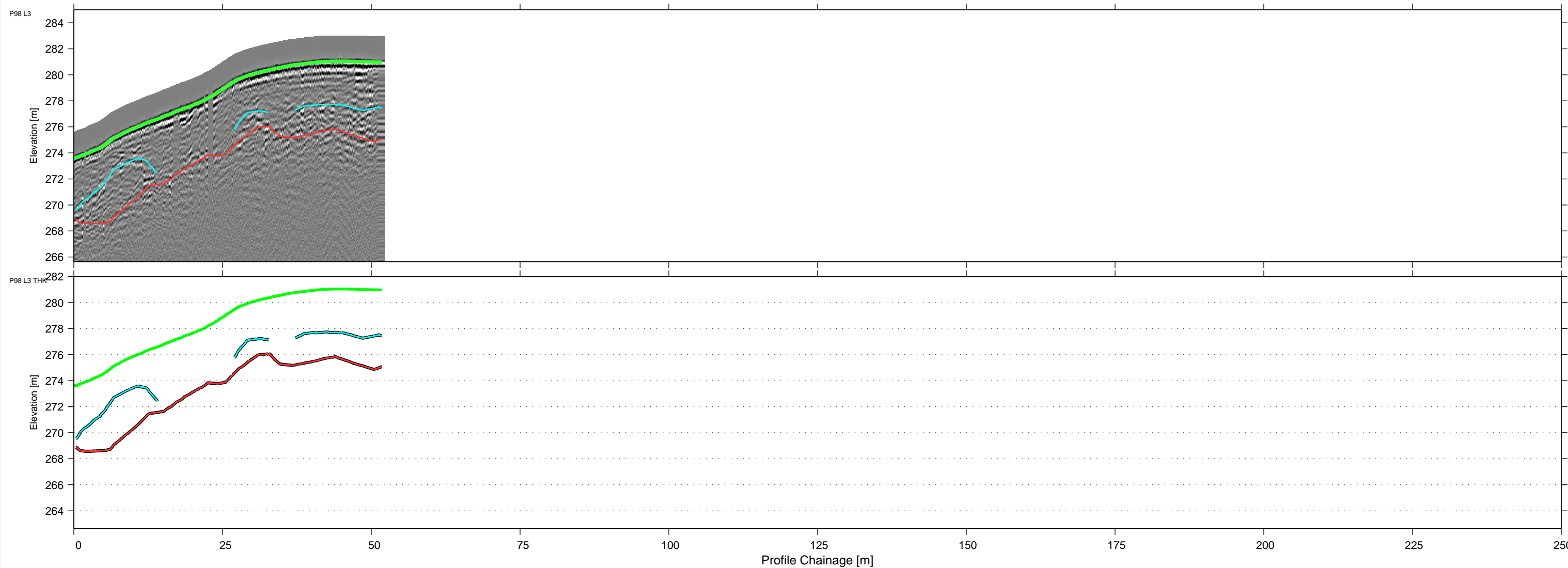
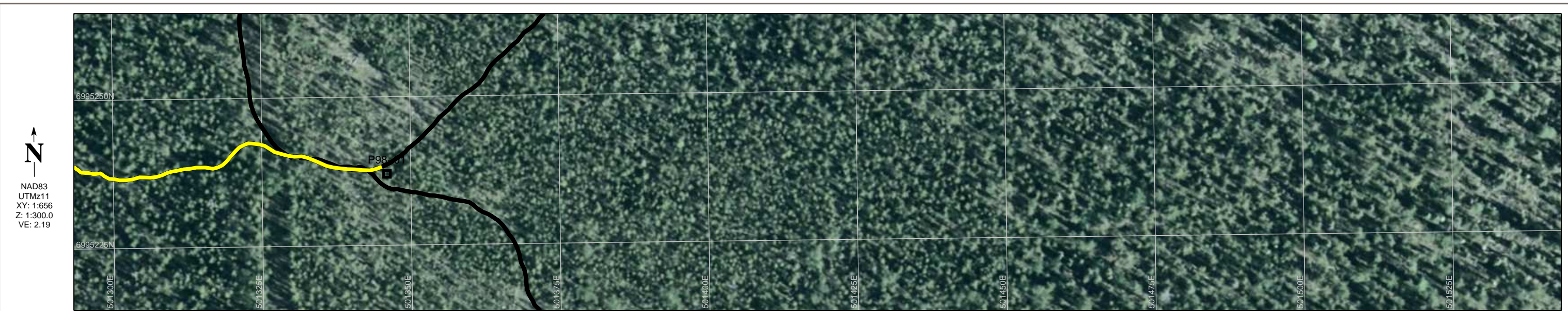
**BOREHOLE LEGEND**

	GRAVEL
	SAND
	SILT
	CLAY
	TOPSOIL
	BEDROCK
	PEAT

CLIENT



2017 Geophysical Investigation TASR Granular					
<b>P98 100 MHz GPR Data Line 3</b>					
Project No. ENG.YARC03107-01	DWN JA	CHKD NSP	APVD NSP	REV 0	P98-L3-01
OFFICE Edmonton	DATE August 30, 2017				



**LEGEND**

- Plotted Data Collection Tracks
- Ground Surface
- Interpreted Bedrock Reflector
- - - Interpreted Other Bedrock Reflector
- Interpreted Other Overburden Reflector

**BOREHOLE LEGEND**

- █ GRAVEL
- █ SAND
- █ SILT
- █ CLAY
- █ TOPSOIL
- █ BEDROCK
- █ PEAT

CLIENT

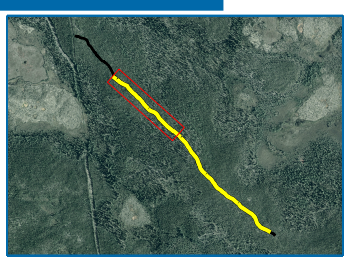
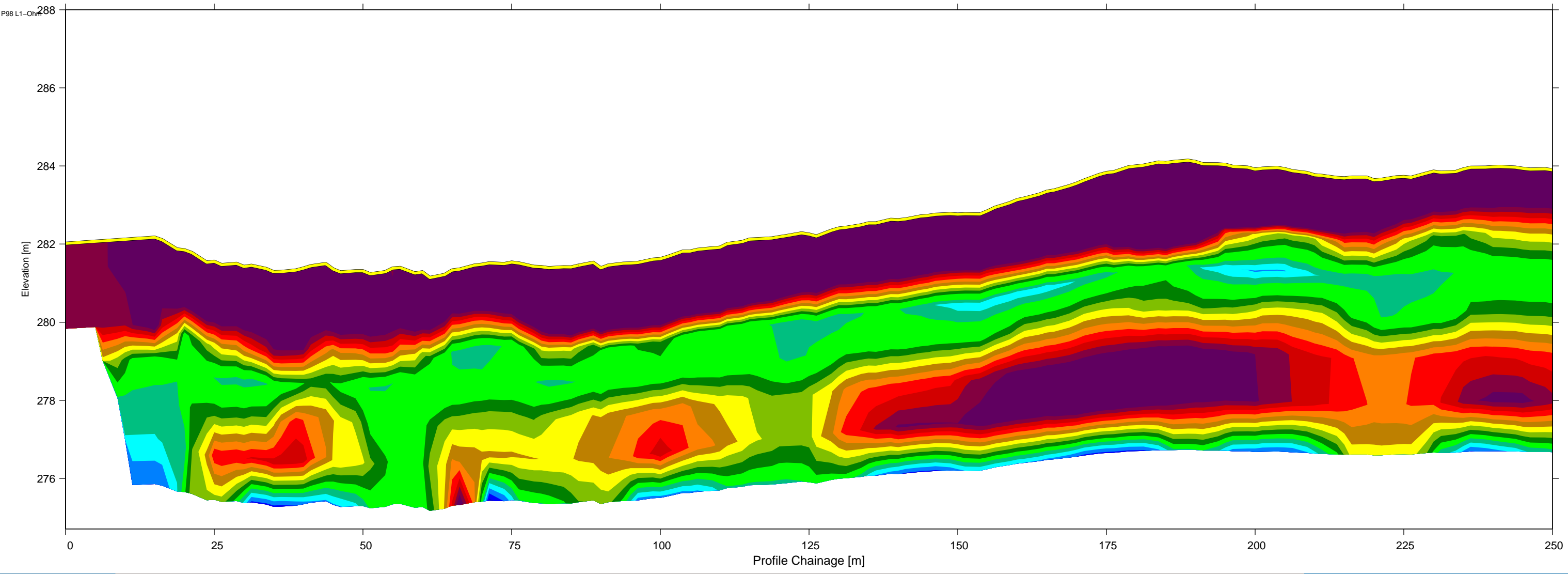
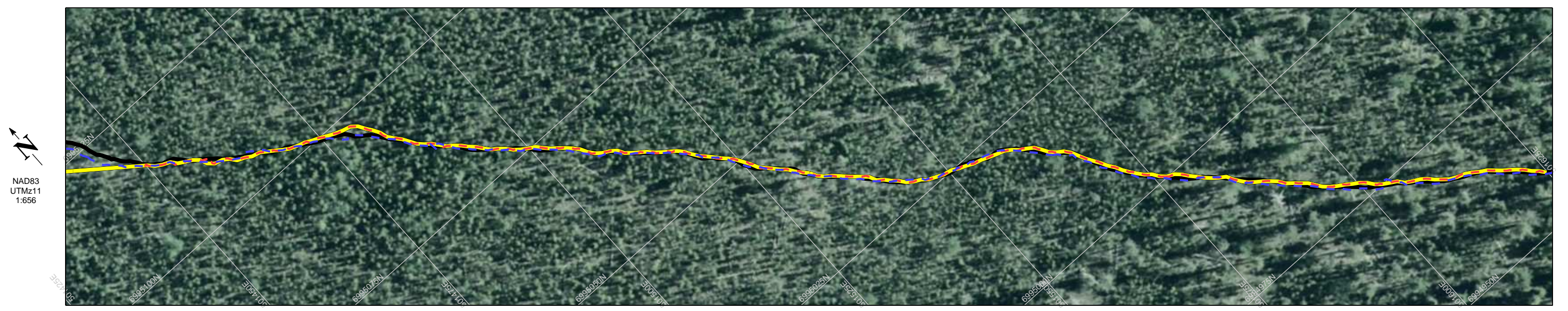


Northwest Territories



TETRA TECH

2017 Geophysical Investigation TASR Granular					
<b>P98</b> <b>100 MHz GPR Data</b> <b>Line 3</b>					
Project No. ENG.YARC03107-01	DWN JA	CHKD NSP	APVD NSP	REV 0	P98-L3-02
OFFICE Edmonton	DATE August 30, 2017				

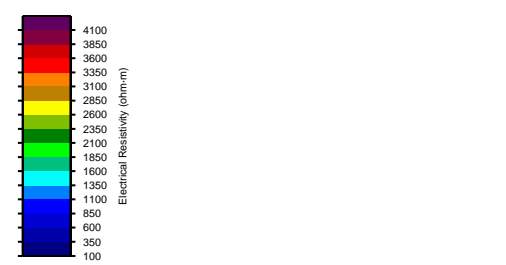


**LEGEND**


- Ground Surface
- Ice Bottom
- River Bottom
- Bedrock Surface

**BOREHOLE LEGEND**

- █ GRAVEL
- █ SAND
- █ SILT
- █ CLAY
- █ TOPSOIL
- █ BEDROCK
- █ PEAT



**CLIENT**



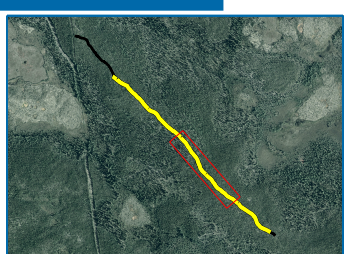
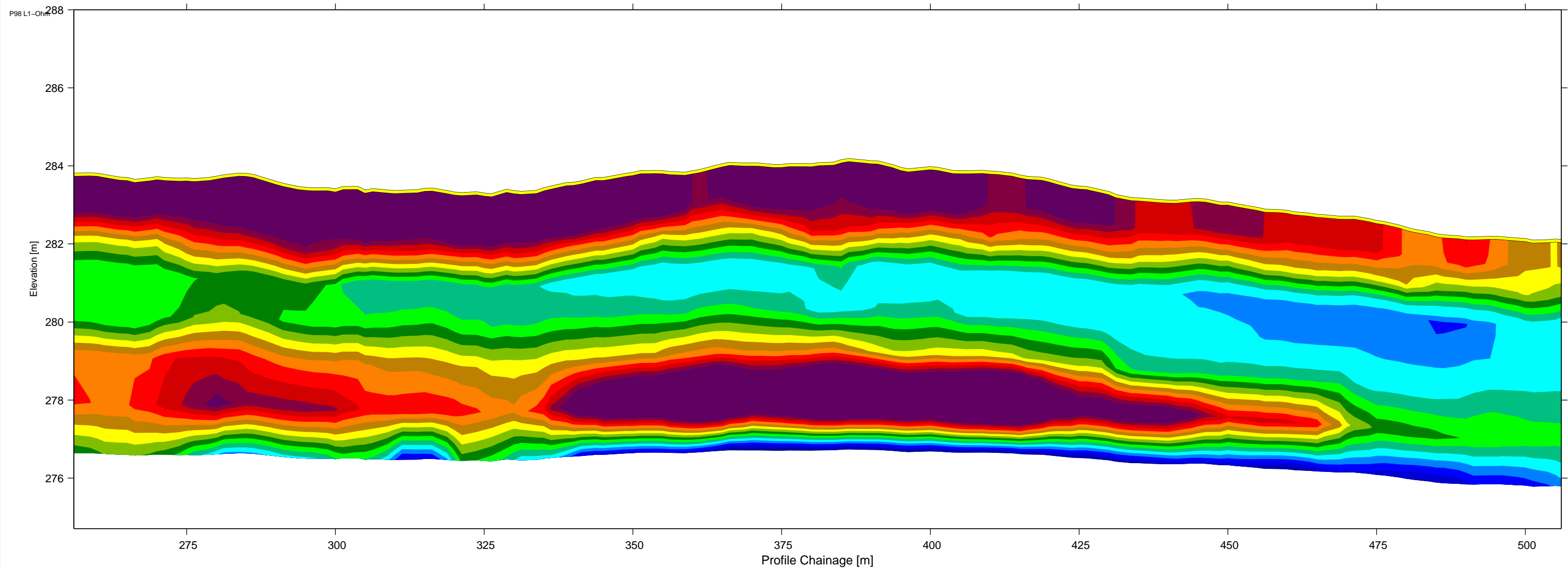
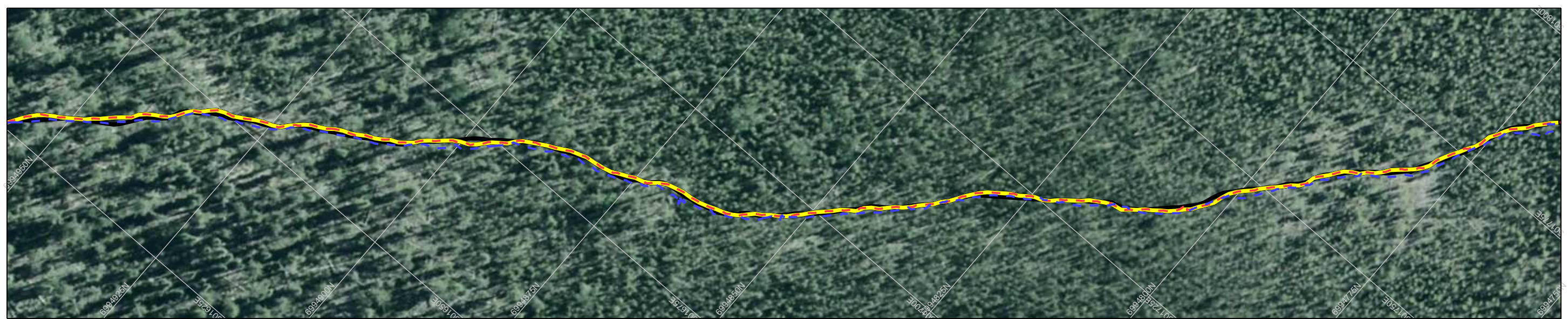
**2017 Geophysical Investigation  
TASR Granular**

**P98  
Capacitively Coupled Resistivity Data  
Line 1**

<b>Project No.</b> ENG.YARC03107-01	<b>DWN</b> RJM	<b>CHKD</b> NSP	<b>APVD</b> NSP	<b>REV</b> 0	P98-Ohm.1
<b>OFFICE</b> Edmonton	<b>DATE</b> August 30, 2017				

**TETRA TECH EBA**

NAD83  
UTMz11  
1:656

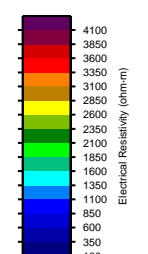


**LEGEND**

- Ground Surface
- Ice Bottom
- River Bottom
- Bedrock Surface

**BOREHOLE LEGEND**

- █ GRAVEL
- █ SAND
- █ SILT
- █ CLAY
- █ TOPSOIL
- █ BEDROCK
- █ PEAT



CLIENT

Northwest Territories

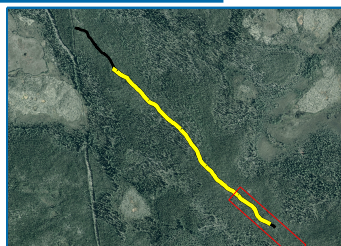
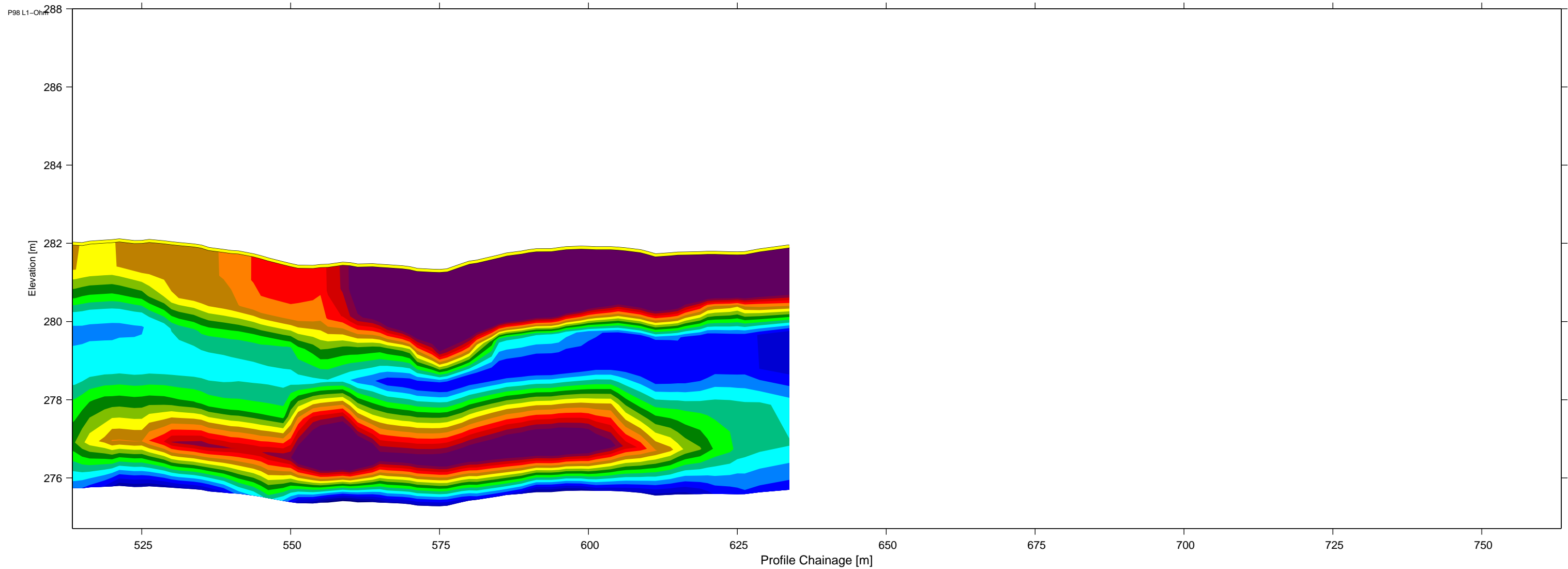
TETRA TECH EBA

**2017 Geophysical Investigation  
TASR Granular**

**P98  
Capacitively Coupled Resistivity Data  
Line 1**

Project No. ENG.YARC03107-01	DWN RJM	CHKD NSP	APVD NSP	REV 0
OFFICE Edmonton	DATE August 30, 2017			P98-Ohm.2

NAD83  
UTMz11  
1:656

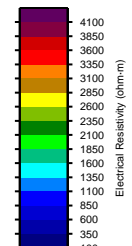


**LEGEND**

- Ground Surface
- Ice Bottom
- River Bottom
- Bedrock Surface

**BOREHOLE LEGEND**

- GRAVEL
- SAND
- SILT
- CLAY
- TOPSOIL
- BEDROCK
- PEAT



CLIENT



**2017 Geophysical Investigation  
TASR Granular**

**P98  
Capacitively Coupled Resistivity Data  
Line 1**

Project No. ENG.YARC03107-01	DWN RJM	CHKD NSP	APVD NSP	REV 0
OFFICE Edmonton	DATE August 30, 2017			

P98-Ohm.3