

LEGEND

- Plotted Data Collection Tracks
- Ground Surface
- Interpreted Bedrock Reflector
- - Interpreted Other Bedrock Reflector
- Interpreted Other Overburden Reflector

BOREHOLE LEGEND

- █ GRAVEL
- █ SAND
- █ SILT
- █ CLAY
- █ TOPSOIL
- █ BEDROCK
- █ PEAT

CLIENT

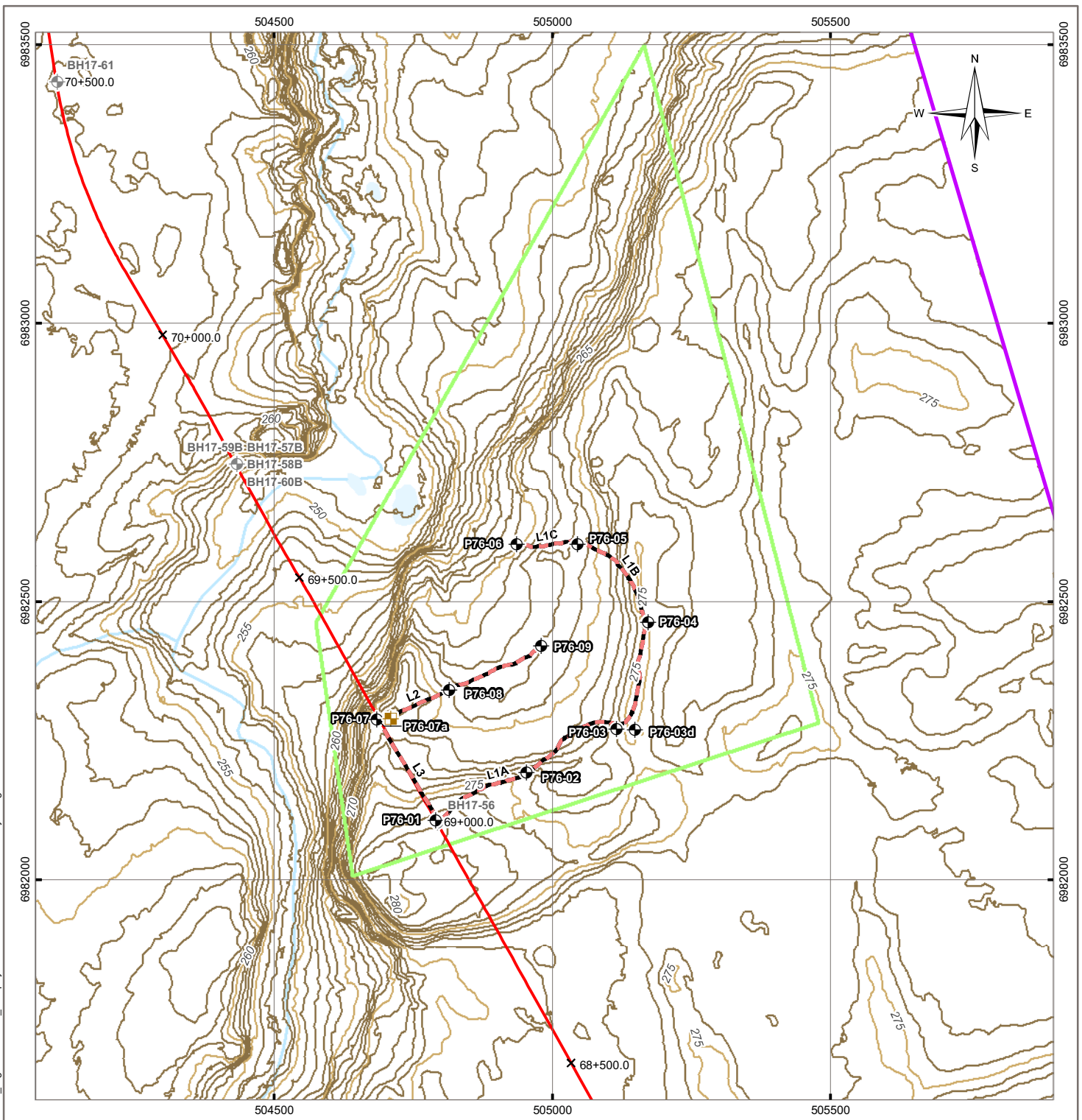


Northwest Territories



2017 Geophysical Investigation TASR Granular					
P69 100 MHz GPR Data Line 3					
Project No. ENG.YARC03107-01	DWN JA	CHKD NSP	APVD NSP	REV 0	P69-L3
OFFICE Edmonton	DATE August 30, 2017				

Q:\Vancouver\ENGINEERING\YARC\YARC03107-01\FigureP76-001_Geophysics.mxd modified 9/27/2017 by morgun.zondervan



LEGEND

- Borehole
- Hand Dug Testpit
- Drill Hole is by Others*
- Proposed TASR
- Ground Penetrating Radar Line
- 2 km Swath
- Granular Prospect
- Index Contour (5 m)
- Intermediate Contour (1 m)
- Watercourse

NOTES
 Base data source:
 CanVec Topo Data
 *Boreholes locations provided by
 GNWT, source Stantec 2017
 winter drilling program

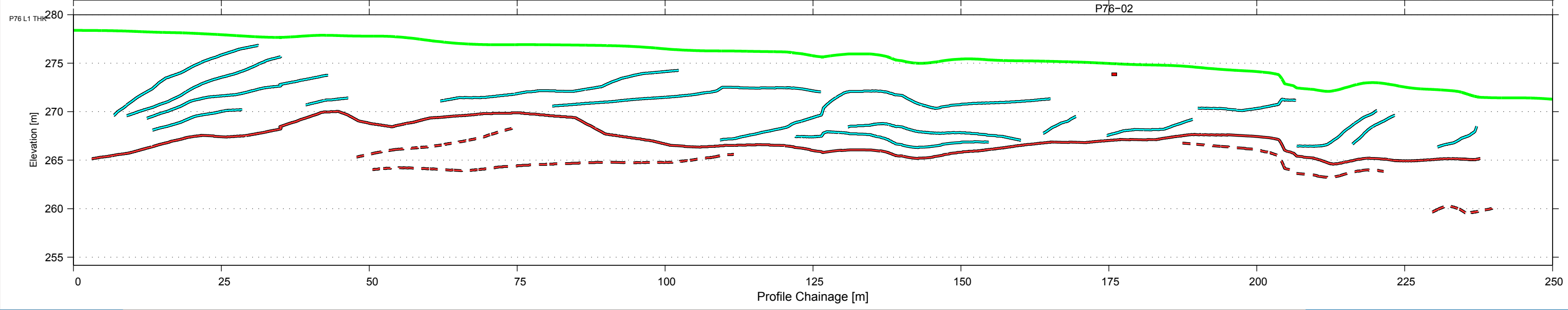
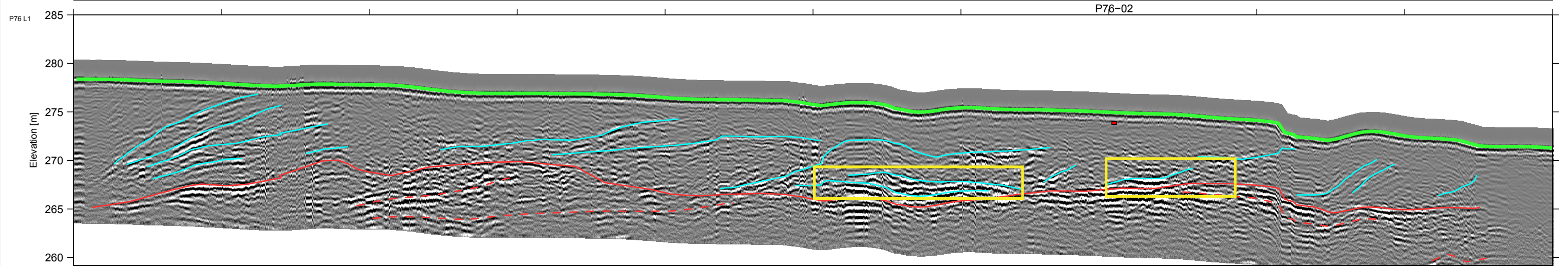
STATUS
 ISSUED FOR REVIEW

2017 GEOTECHNICAL INVESTIGATION TASR PROSPECTS

Prospect 76 Geophysical Site Plan

PROJECTION UTM Zone 11	DATUM NAD83	CLIENT
Scale: 1:10,000		
FILE NO. YARC03107-01_FigureP76-001_Geophysics.mxd	CLIENT 	
OFFICE Tl-VANC	DWN MEZ	CKD SL
DATE September 27, 2017	APVD NP	REV 0
PROJECT NO. ENG.YARC03107-01		Figure P76-001

NAD83
UTMz11
XY: 1:656
Z: 1:400.0
VE: 1.64



LEGEND

- Plotted Data Collection Tracks
- Ground Surface
- Interpreted Bedrock Reflector
- - - Interpreted Other Bedrock Reflector
- Interpreted Other Overburden Reflector

BOREHOLE LEGEND

- █ GRAVEL
- █ SAND
- █ SILT
- █ CLAY
- █ TOPSOIL
- █ BEDROCK
- █ PEAT

Possibly Ice Rich Soils or Massive Ice

CLIENT

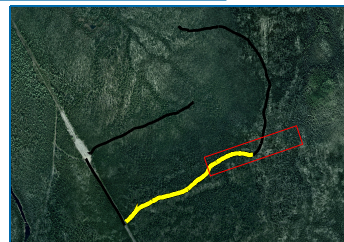
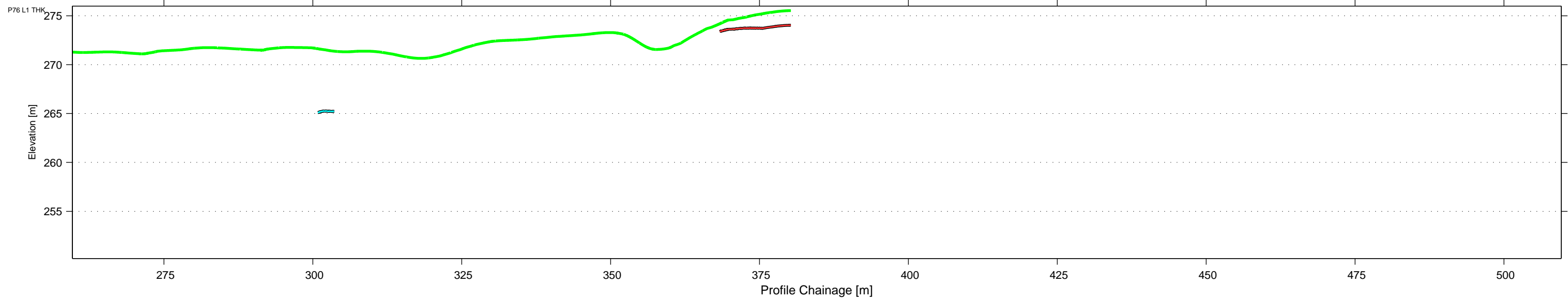
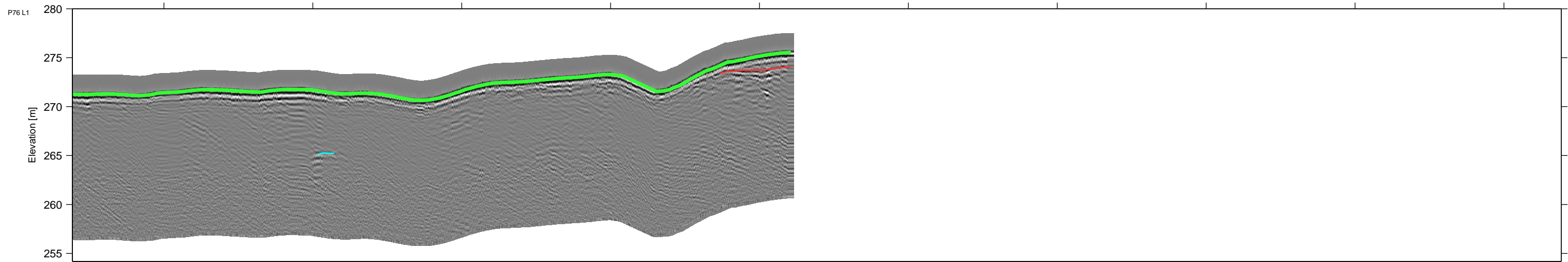


**2017 Geophysical Investigation
TASR Granular**

**P76
100 MHz GPR Data
Line 1**

Project No. ENG.YARC03107-01	DWN JA	CHKD NSP	APVD NSP	REV 0	P76-L1-01.1
Office Edmonton	DATE August 30, 2017				

NAD83
UTMz11
XY: 1:656
Z: 1:400.0
VE: 1.64



LEGEND

- Plotted Data Collection Tracks
- Ground Surface
- Interpreted Bedrock Reflector
- - Interpreted Other Bedrock Reflector
- Interpreted Other Overburden Reflector

BOREHOLE LEGEND

- █ GRAVEL
- █ SAND
- █ SILT
- █ CLAY
- █ TOPSOIL
- █ BEDROCK
- █ PEAT

CLIENT

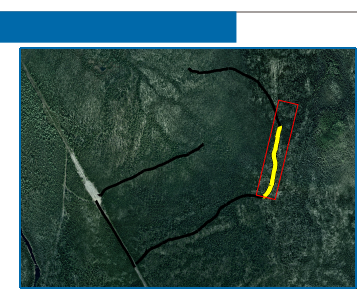
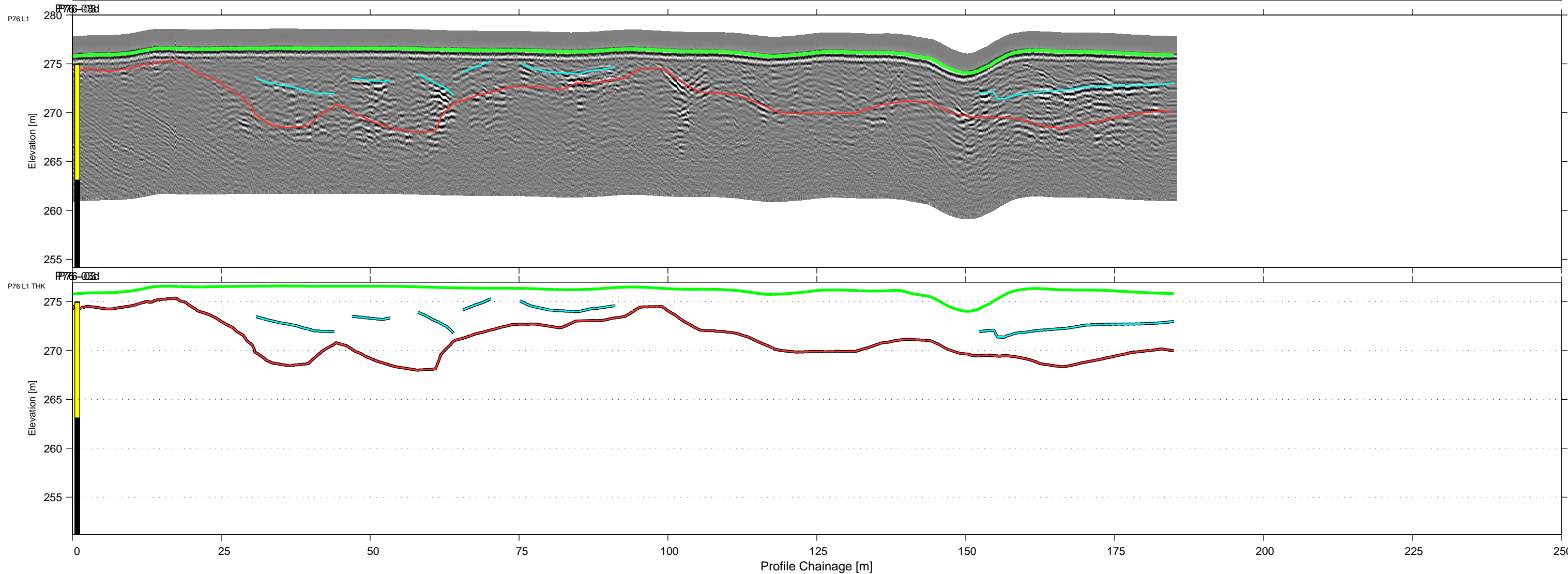


**2017 Geophysical Investigation
TASR Granular**

**P76
100 MHz GPR Data
Line 1**

Project No. ENG.YARC03107-01	DWN JA	CHKD NSP	APVD NSP	REV 0
OFFICE Edmonton	DATE August 30, 2017			

P76-L1-01.2




LEGEND

- Plotted Data Collection Tracks
- Ground Surface
- Interpreted Bedrock Reflector
- - Interpreted Other Bedrock Reflector
- Interpreted Other Overburden Reflector

BOREHOLE LEGEND

- █ GRAVEL
- █ SAND
- █ SILT
- █ CLAY
- █ TOPSOIL
- █ BEDROCK
- █ PEAT

CLIENT



Northwest Territories

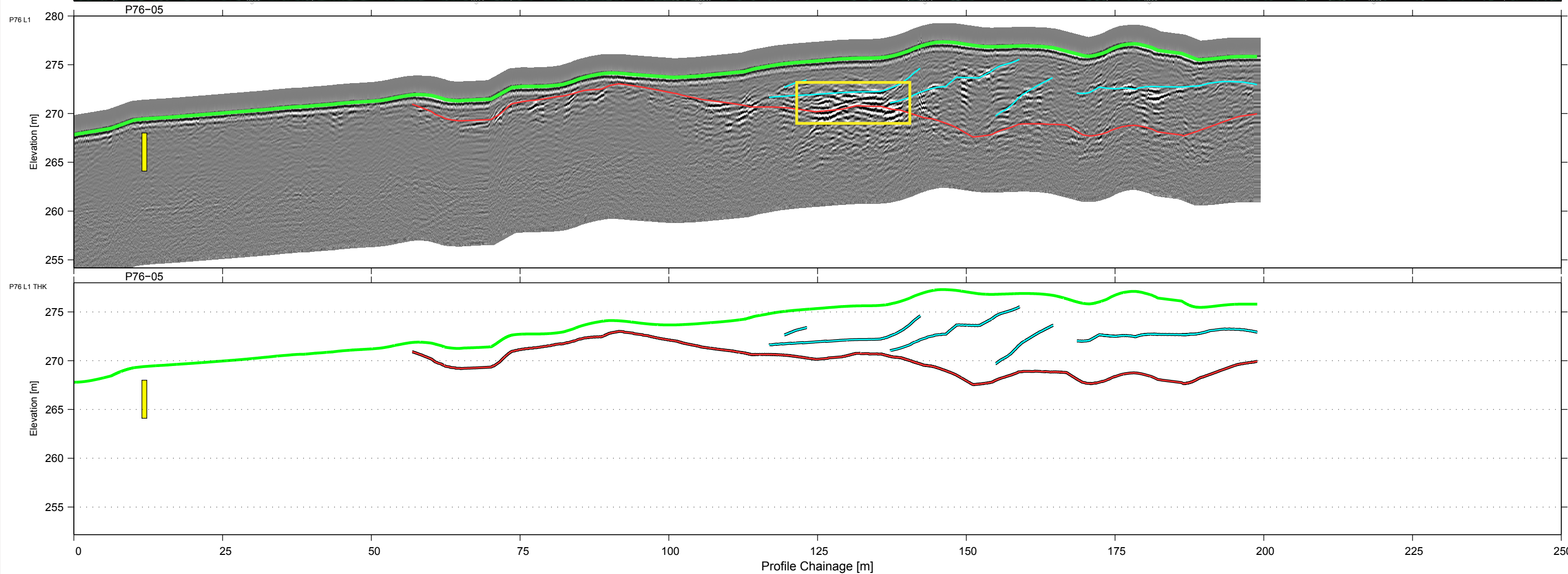


TETRA TECH

2017 Geophysical Investigation TASR Granular					
P76 100 MHz GPR Data Line 1					
Project No. ENG.YARC03107-01	DWN JA	CHKD NSP	APVD NSP	REV 0	P76-L1-02
OFFICE Edmonton	DATE August 30, 2017				



NAD83
UTMz11
XY: 1:656
Z: 1:400.0
VE: 1.64



LEGEND	
	Plotted Data Collection Tracks
	Ground Surface
	Interpreted Bedrock Reflector
	Interpreted Other Bedrock Reflector
	Interpreted Other Overburden Reflector

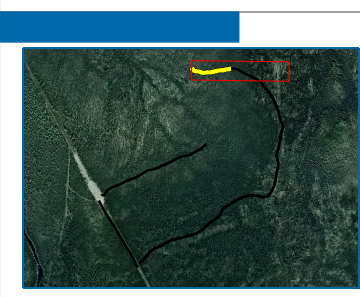
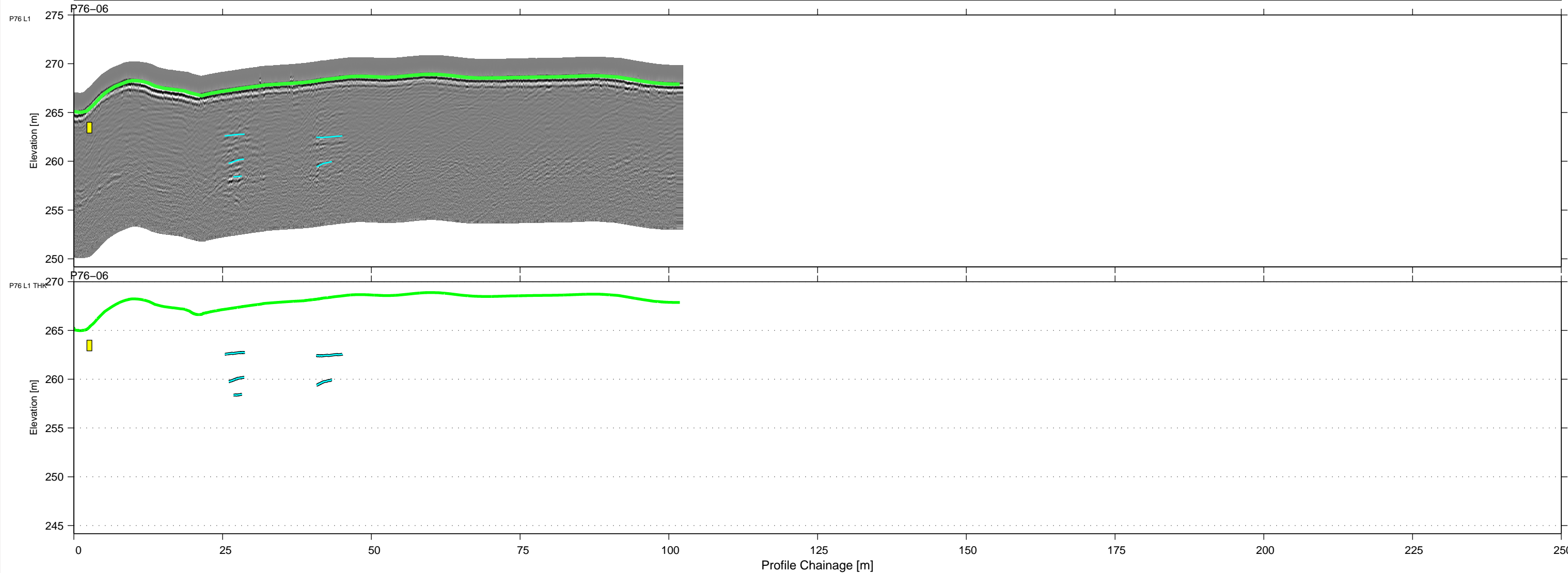
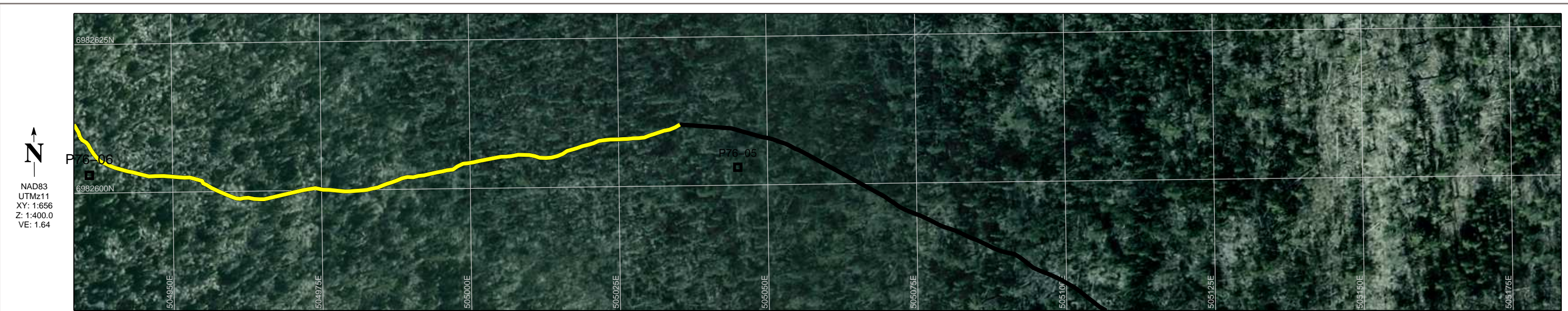
BOREHOLE LEGEND	
	GRAVEL
	SAND
	SILT
	CLAY
	TOPSOIL
	BEDROCK
	PEAT

Possibly Ice Rich Soils or Massive Ice

CLIENT



2017 Geophysical Investigation TASR Granular					
P76 100 MHz GPR Data Line 1					
Project No. ENG.YARC03107-01	DWN JA	CHKD NSP	APVD NSP	REV 0	P76-L1-03
OFFICE Edmonton	DATE August 30, 2017				



LEGEND

- Plotted Data Collection Tracks
- Ground Surface
- Interpreted Bedrock Reflector
- - Interpreted Other Bedrock Reflector
- Interpreted Other Overburden Reflector

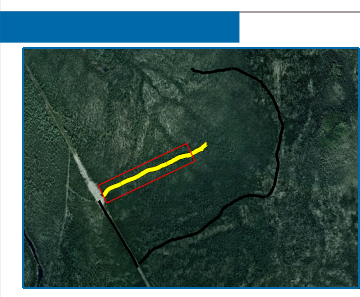
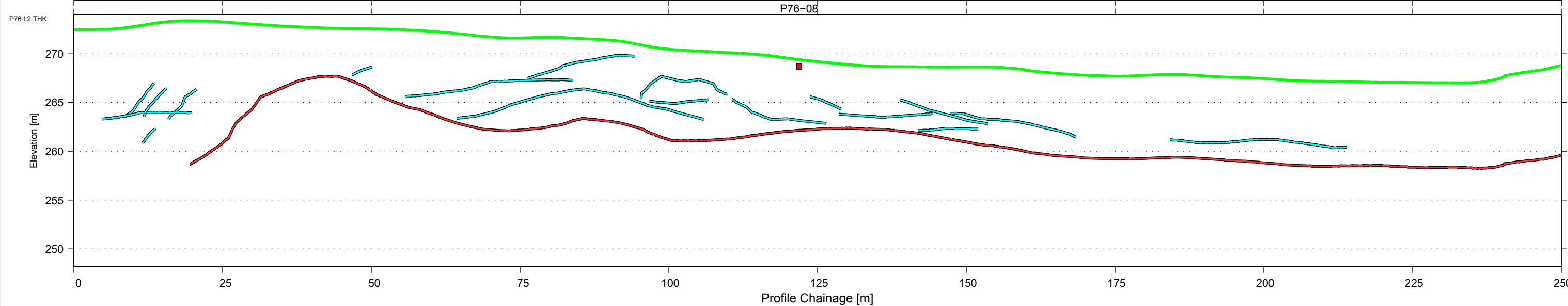
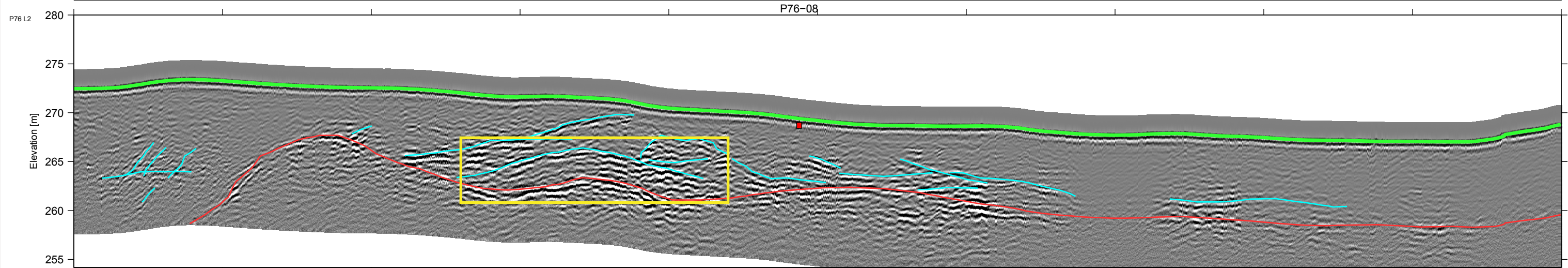
BOREHOLE LEGEND

- █ GRAVEL
- █ SAND
- █ SILT
- █ CLAY
- █ TOPSOIL
- █ BEDROCK
- █ PEAT

CLIENT



2017 Geophysical Investigation TASR Granular					
P76 100 MHz GPR Data Line 1					
Project No. ENG.YARC03107-01	DWN JA	CHKD NSP	APVD NSP	REV 0	P76-L1-04
OFFICE Edmonton	DATE August 30, 2017				



LEGEND

- Plotted Data Collection Tracks
- Ground Surface
- Interpreted Bedrock Reflector
- - Interpreted Other Bedrock Reflector
- Interpreted Other Overburden Reflector

BOREHOLE LEGEND

	GRAVEL
	SAND
	SILT
	CLAY
	TOPSOIL
	BEDROCK
	PEAT

Possibly Ice Rich Soils or Massive Ice

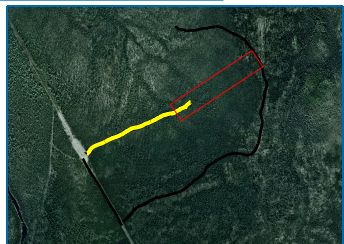
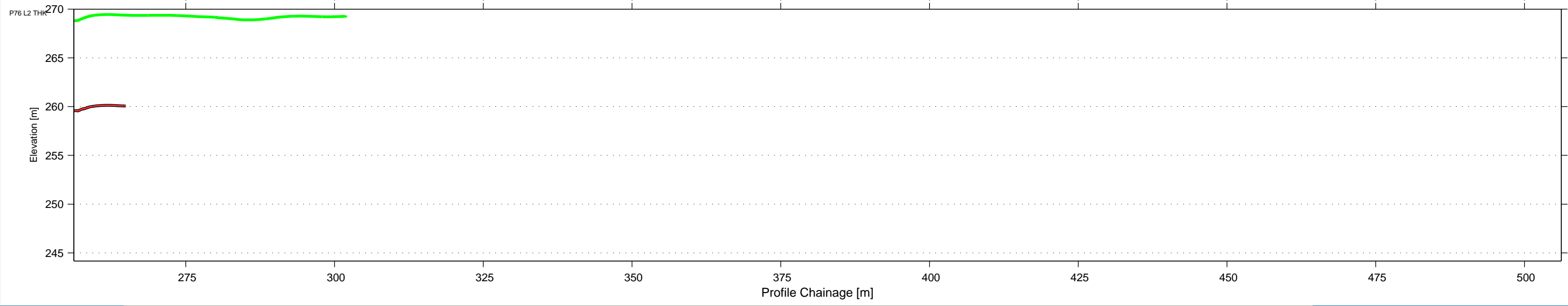
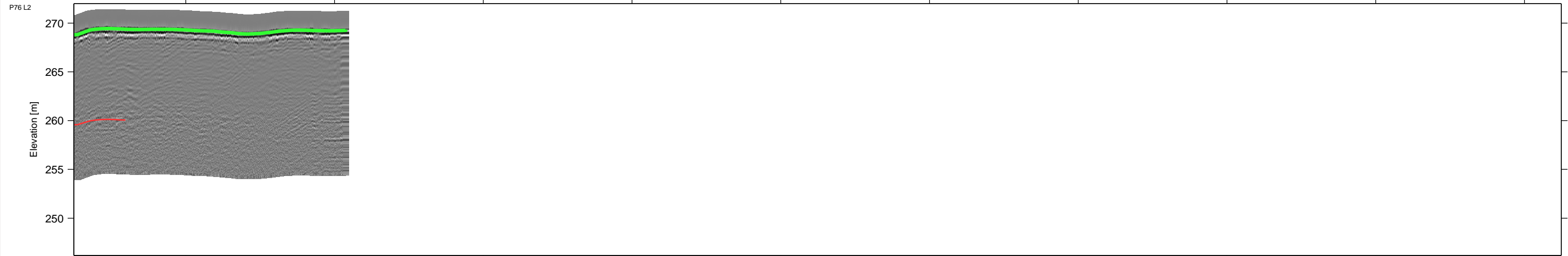
CLIENT



2017 Geophysical Investigation TASR Granular					
P76 100 MHz GPR Data Line 2					
Project No. ENG.YARC03107-01	DWN JA	CHKD NSP	APVD NSP	REV 0	P76-L2.1
OFFICE Edmonton	DATE August 30, 2017				



NAD83
UTMz11
XY: 1:656
Z: 1:400.0
VE: 1.64



LEGEND

- Plotted Data Collection Tracks
- Ground Surface
- Interpreted Bedrock Reflector
- - Interpreted Other Bedrock Reflector
- Interpreted Other Overburden Reflector

BOREHOLE LEGEND

- █ GRAVEL
- █ SAND
- █ SILT
- █ CLAY
- █ TOPSOIL
- █ BEDROCK
- █ PEAT

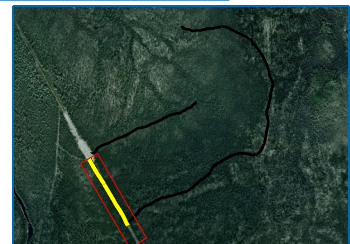
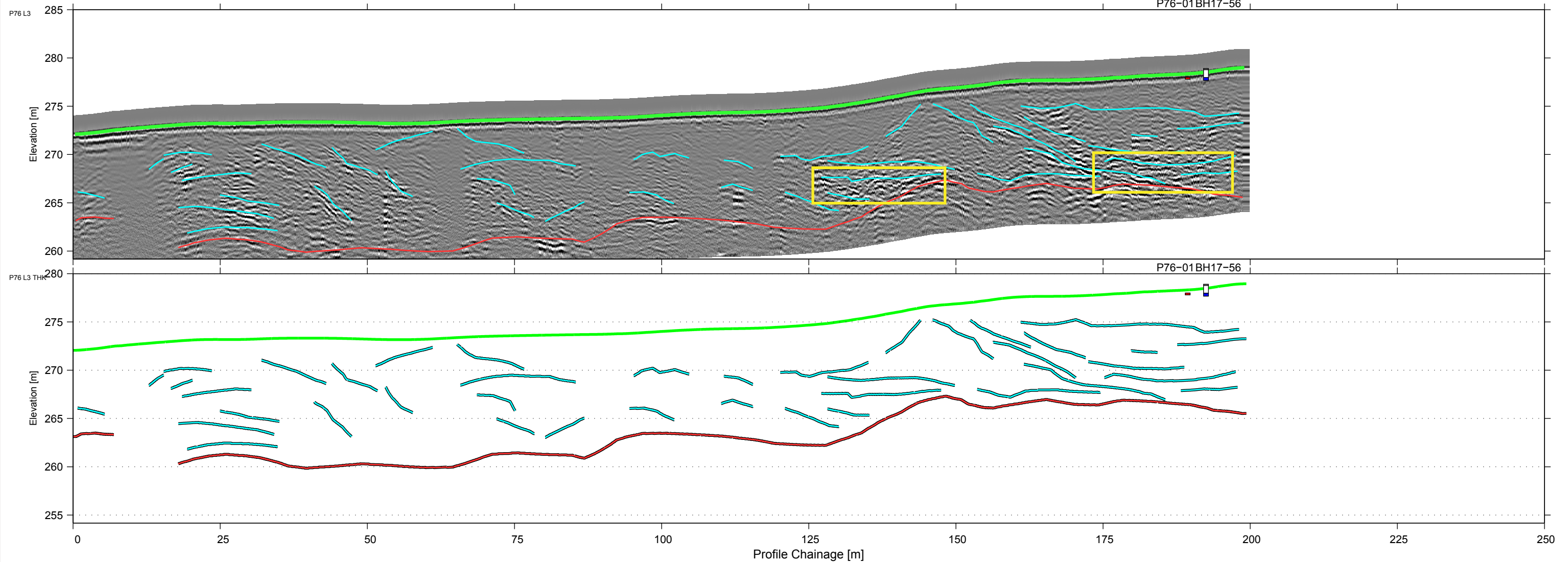
CLIENT



2017 Geophysical Investigation TASR Granular					
P76 100 MHz GPR Data Line 2					
Project No. ENG.YARC03107-01	DWN JA	CHKD NSP	APVD NSP	REV 0	P76-L2.2
OFFICE Edmonton	DATE August 30, 2017				



NAD83
UTMz11
XY: 1:656
Z: 1:400.0
VE: 1.64



LEGEND

- Plotted Data Collection Tracks
- Ground Surface
- Interpreted Bedrock Reflector
- - - Interpreted Other Bedrock Reflector
- Interpreted Other Overburden Reflector

BOREHOLE LEGEND

	GRAVEL
	SAND
	SILT
	CLAY
	TOPSOIL
	BEDROCK
	PEAT

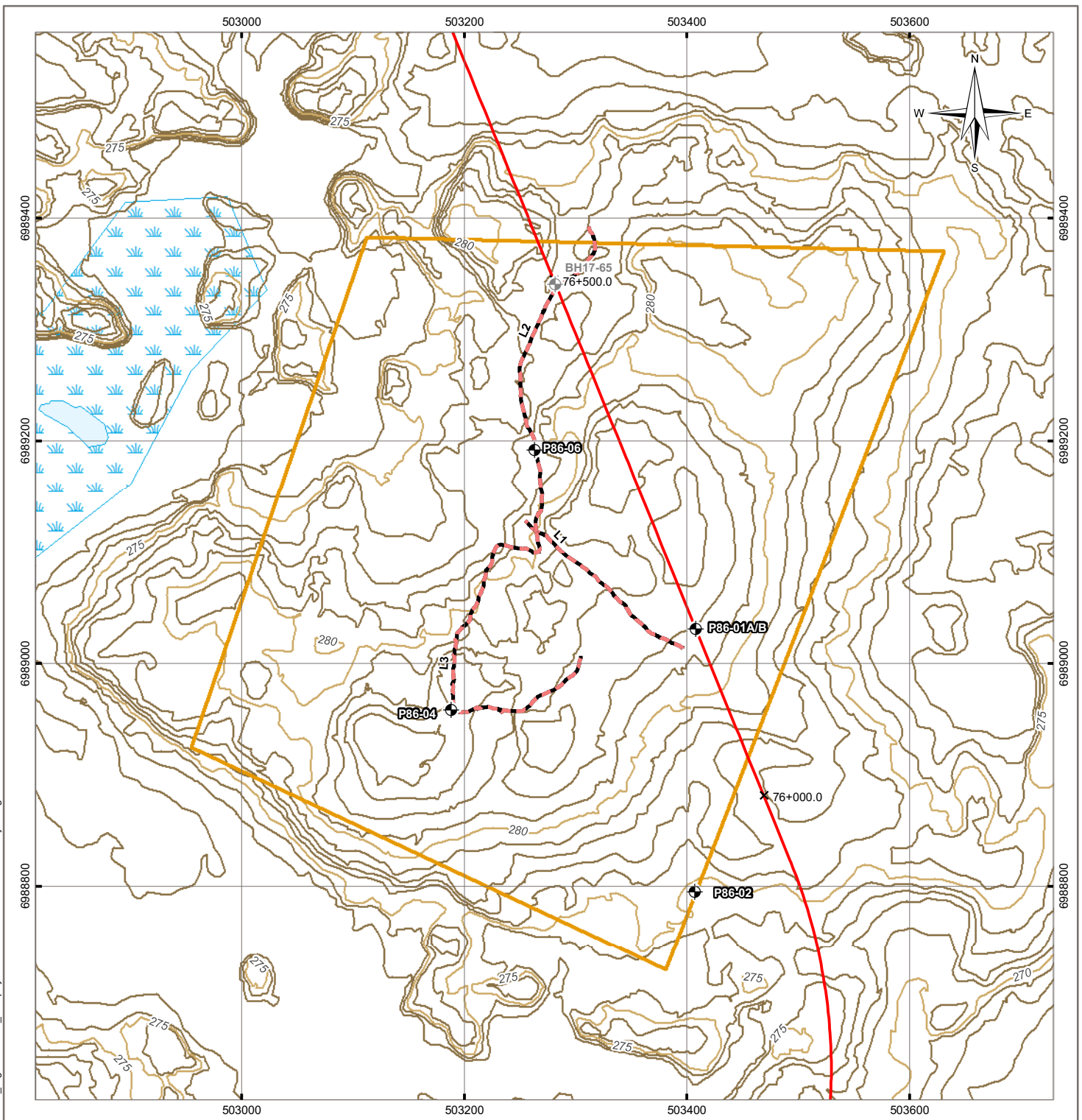
Possibly Ice Rich Soils or Massive Ice

CLIENT











2017 Geophysical Investigation TASR Granular					
P76 100 MHz GPR Data Line 3					
Project No. ENG.YARC03107-01	DWN JA	CHKD NSP	APVD NSP	REV 0	P76-L3
OFFICE Edmonton	DATE August 30, 2017				

Q:\Vancouver\GIS\ENGINEERING\YARC\YARC03107-01\Figure86-001_Geophysics.mxd modified 9/27/2017 by morgana.zondervan




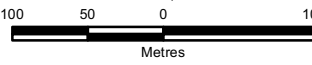
LEGEND


-  Borehole
-  Drill Hole is by Others*
-  Proposed TASR
-  Ground Penetrating Radar Line
-  Bedrock Prospect
-  Index Contour (5 m)
-  Intermediate Contour (1 m)
-  Wetland


NOTES
 Base data source:
 CanVec Topo Data
 *Boreholes locations provided by
 GNWT, source Stantec 2017
 winter drilling program
STATUS
 ISSUED FOR REVIEW

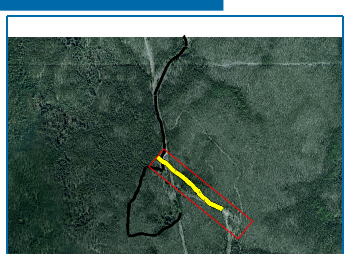
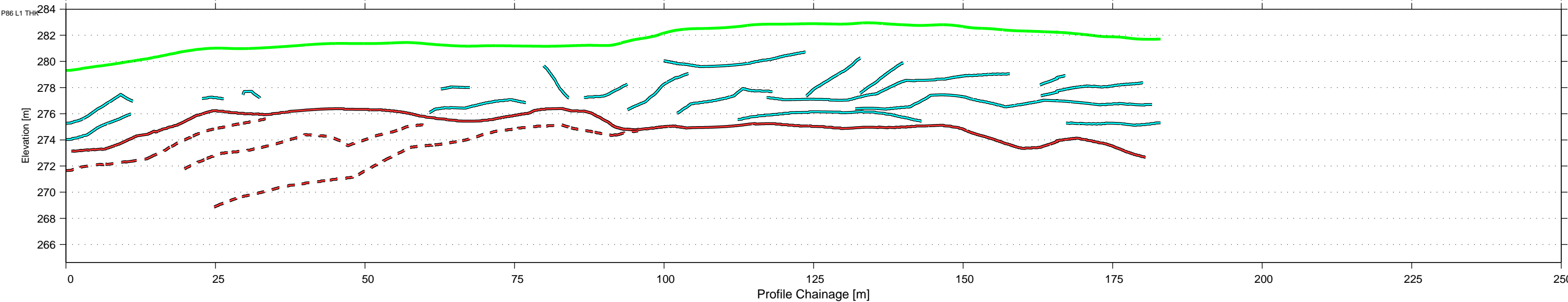
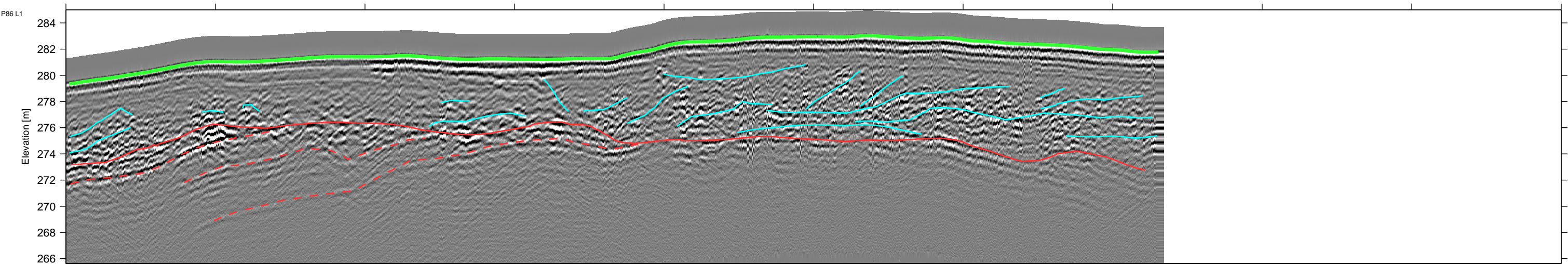
2017 GEOTECHNICAL INVESTIGATION TASR PROSPECTS

Prospect 86 Geophysical Site Plan

PROJECTION UTM Zone 11	DATUM NAD83	CLIENT 
Scale: 1:5,000  Metres		
FILE NO. YARC03107-01_Figure86-001_Geophysics.mxd		
OFFICE Ti-VANC	DWN MEZ	CKD SL
DATE September 27, 2017	APVD NP	REV 0
PROJECT NO. ENG.YARC03107-01		Figure 86-001

CLIENT

 Northwest Territories

TETRA TECH




LEGEND

- Plotted Data Collection Tracks
- Ground Surface
- Interpreted Bedrock Reflector
- - - Interpreted Other Bedrock Reflector
- Interpreted Other Overburden Reflector

BOREHOLE LEGEND

	GRAVEL
	SAND
	SILT
	CLAY
	TOPSOIL
	BEDROCK
	PEAT

CLIENT



2017 Geophysical Investigation TASR Granular					
P86 100 MHz GPR Data Line 1					
Project No. ENG.YARC03107-01	DWN JA	CHKD NSP	APVD NSP	REV 0	P86-L1
OFFICE Edmonton	DATE August 30, 2017				