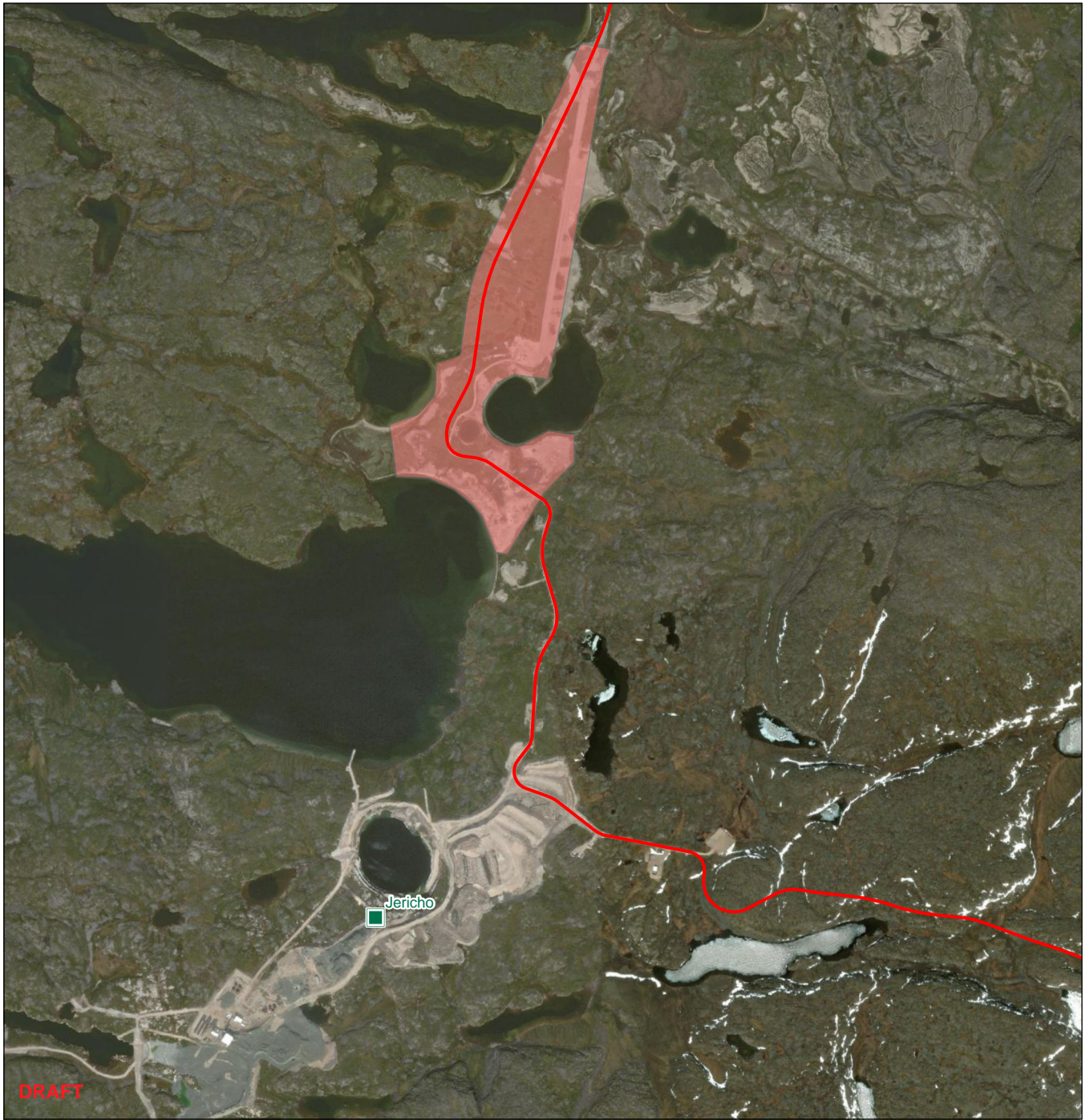
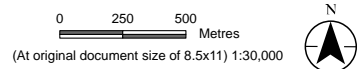


\\Ca0002-ppfs05\geomatics\Clients\Nunami_Stantec\GBRP\Figures\123514868_075_Overviews_for_InuitAdvisoryMeetings.pptx Revised: 2025-04-08 By: stiemay



- Closed Mine Site
- Grays Bay Road
- Jericho Station PDA



Project Location West Kitikmeot Region Nunavut
 Prepared by DS on 2025-03-10
 TR by AY on 2025-03-10

Client/Project West Kitikmeot Resources Corp Grays Bay Road and Port
 123514868_078

Figure No. 23
Title Jericho Station Overview
DRAFT

Notes
 1. Coordinate System: WGS 1984 UTM Zone 12N
 2. Data Sources: Government of Canada, Stantec, Earthstar Geographics